

County : Montgomery
AUN Number : 123466403
LEA Type : SD

LEA Name : Pottstown SD
Address : 230 Beech St
Pottstown , PA 19464

**Annual Financial Report
Accuracy Certification Statement**

For Fiscal Year Ending

6/30/2023

Pennsylvania Department of Education

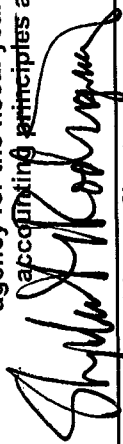
&

Office of Comptroller Operations

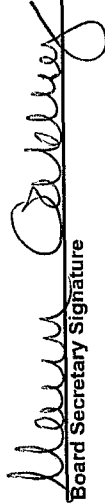
PDE-2056 Intermediate Unit

PDE-2057 School District, AVTS/CTC, Charter School,
and Special Program Jointure

CERTIFICATION: By signing this page I agree that the electronic data submitted is a complete and accurate statement of the financial operations and status of the local education agency for the fiscal year. It has been prepared in accordance with generally accepted accounting principles and established Commonwealth of PA reporting guidelines.



Chief School Administrator Signature



Board Secretary Signature

Date

12/13/23.

Date

12/12/23

Maureen Oakley

Contact Person

mjumpo@pottstownk12.org

Contact Person E-mail Address

(610)970-6610

Ext :

Contact Person Telephone Number

(610)326-6540

Contact Person Fax Number

Audit Certification

Annual Financial Report:

For Fiscal Year Ending 6/30/2023

(Pursuant to PA School Code Section 218(b))

LEA Name : Pottstown SD
AUN Number : 123466403
County : Montgomery

Audit Certification Due:
12/31/2023

This certification is applicable to the Annual Financial Report data submitted through the Consolidated Financial Reporting System (CFRS).

CERTIFICATION: By signing this page I agree that the financial statements of the school have been properly audited as noted above pursuant to Article XXIV, and in the auditor's professional opinion, the Annual Financial Report (PDE-2057) submitted through CFRS is materially consistent with the audited financial statements.

Chief School Administrator

Signature

Date

Board Secretary

Signature

Date

Maureen Oakley

Contact Person

(610)970-6610

Contact Person Telephone Number

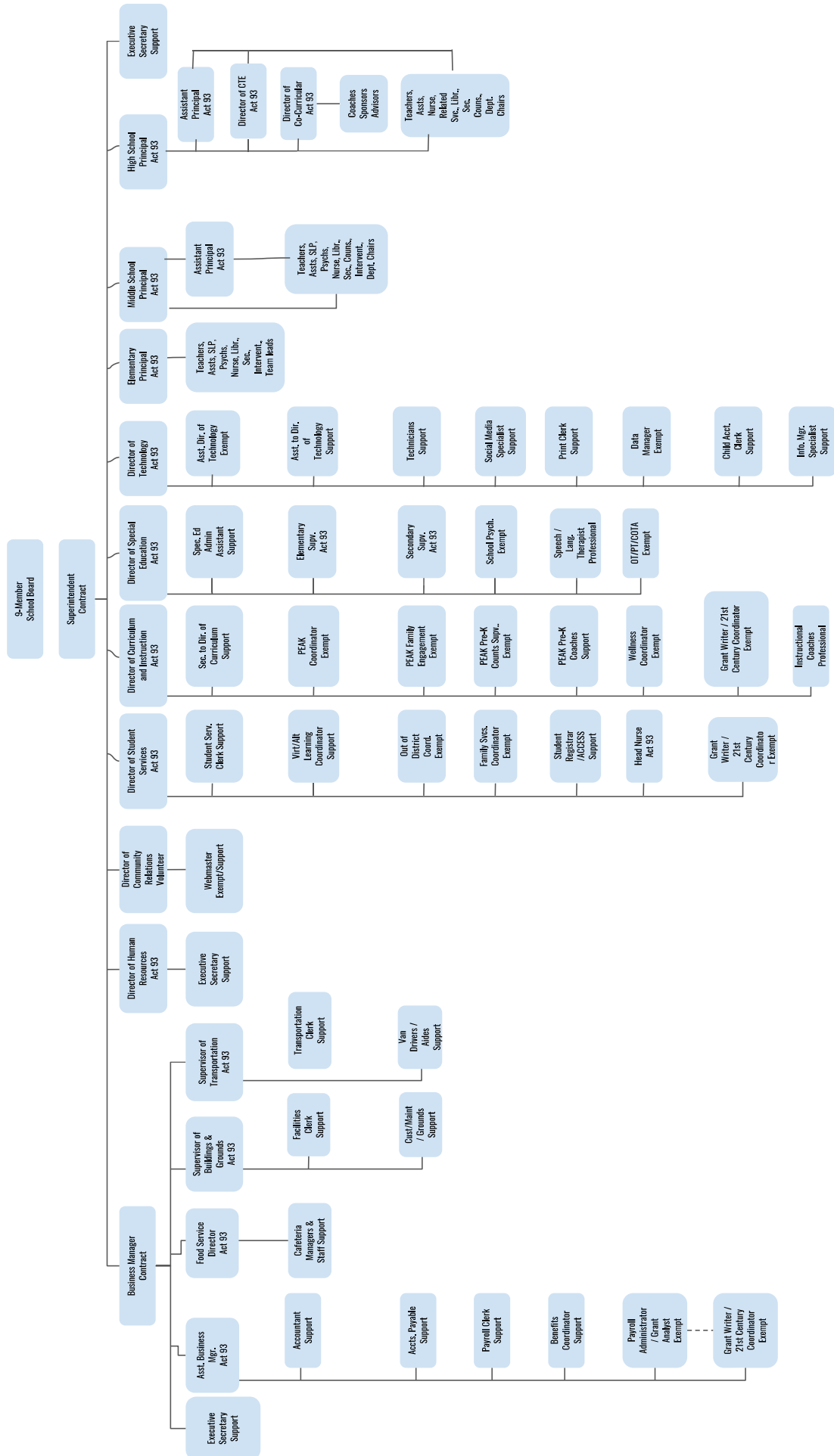
Ext .

mjampo@pottstownk12.org

Contact Person E-mail Address

(610)326-6540

Contact Person Fax Number



Pottstown School District – March 15, 2018



Book: Policy Manual
Section: 600 Finances
Title: Capital Assets / GASB Statement 34
Code: 622
Status: For Board Approval
Adopted: March 15, 2018
Last revised: December 17, 2020

Purpose

The Board recognizes the need to implement the required accounting and financial reporting standards stipulated by the Pennsylvania Department of Education.

The primary objectives of implementing the Governmental Accounting Standards Board (GASB) Statement 34 are to assure compliance with state requirements, and properly account for both the financial and economic resources of the district.

Definition

This policy applies to the district's acquisition and depreciation of capital assets. **Capital assets** include land, improvements to land, easements, buildings and building additions, building improvements, furniture, fixtures and equipment, equipment under lease, vehicles, works of art and historical treasures, construction-in-progress, and infrastructure. **Capital assets** are tangible assets used in operations and have initial useful lives extending beyond a single reporting period. Equipment will not change its original shape, appearance or character with use and it can be expected to last more than one (1) year with reasonable care and maintenance.

Authority

Participation of the school district in any such activity shall be in accordance with Board policy.[\[1\]](#)[\[2\]](#)

Delegation of Responsibility

The responsibility to coordinate the compilation and preparation of all information necessary to implement this policy is delegated to the Superintendent, Business Administrator or their designee.

They should be responsible for implementing the necessary procedures to establish and maintain a capital asset inventory, including depreciation schedules. The basis for depreciation, including groups of assets and useful lives, shall be in writing and submitted for review to the Board.

The Superintendent or designee shall prepare the required Management Discussion and Analysis (MD&A). MD&A shall be in the form required by GASB Statement 34.

The district's independent auditors shall review the MD&A, in accordance with SAS No. 52, "Required Supplementary Information".

Guidelines

Capital Asset Addition Overview

Purchased capital assets greater than \$5,000 should be recorded at historical/original cost. The cost of a capital asset should include capitalized interest and ancillary charges necessary to place the asset into its intended location and condition for use. Ancillary charges include costs that are directly attributable to asset acquisition, such as freight and transportation charges, site preparation costs, and professional fees.

Capital assets should be depreciated over their useful lives as

determined for each asset class. Land, and some land improvements, are considered inexhaustible, and are therefore not subject to depreciation.

Donations

Donated capital assets must be reported at fair market value plus ancillary charges, if any, at the time of donation. Donated assets are depreciated over their useful lives, as determined for each asset class. If determining historical costs is not practical due to inadequate records, reporting should be based on estimates of fair market value at the date of donation.

Depreciation

Depreciation is required for the district's capital assets. Depreciation is calculated using the straight line method. The district calculates depreciation on all capital assets reported in the district financial statements other than land and construction-in-progress.

Disposals

Sale of Capital Assets - When capital assets are sold, calculation of gain or loss on disposal is required. The calculation is based upon the amount of proceeds received less the net book value (cost less accumulated depreciation taken on the asset).

Trade-ins – The value given for a trade is part of the cost of the newly acquired asset. The costs and accumulated depreciation of the traded-in asset must be removed from the books. Any gain or loss resulting from the disposition of the asset will be recognized as a gain or loss on disposal.

Assets Acquired by Capital Lease

Assets acquired by capital lease are recorded at the net present value of the future minimum lease payments. A corresponding liability is established at this time. Assets acquired under the terms of capital leases are depreciated over the useful lives designated for the asset class.

Legal

1. 24 P.S. 218

2. 24 P.S. 613

Governmental Accounting Standards Board, Statement No. 34

Last Modified by Joanne Rhoads on April 18, 2018

Val Number	Description	Justification
42420	<p>Expenditure Detail: Total current year 2700-513 expenditure varies from prior year by 10%. Correct the data or enter a justification.</p> <p>2700-513, AFR Exp Detail: \$2,386,251.96 2700-513, PY AFR Amount: \$1,806,238.63</p>	<p>The district increased special education and out of district placements. It also ran a summer program . There was an increase in homeless students placed in the neighboring school district, so the district paid for busing those students.</p>
50278	<p>SOIN: Current Year AFR amount must equal Prior Year AFR amount. Note: If the variance is due to a Subscription-Based IT Arrangement (SBITA) existing prior to GASB 96 implementation that is now being included on the SOIN as Leases & Other Right-to-Use Arrangements "Amount at FY Start", please note this within the justification.</p> <p>SOIN, Beg Bal, Govt Funds Leases & Other Right to Use Arrangements: \$99,358.00 PY Ending Bal, Govt Funds Leases & Other Right to Use Arrangements: \$0.00</p>	<p>In 2021-22 the district had an opening balance of Leases payable of \$183,432 due to GASB 87 reporting. It was reduced by \$84,074 and the ending balance was \$99358. This was omitted on the 2021-22 AFR.</p>
50280	<p>SOIN: Current Year AFR amount must equal Prior Year AFR amount.</p> <p>SOIN, Beg Bal, Gen Obl Bnds: \$40,040,000.00 PY Ending Bal, Gen Obl Bnds: \$40,115,000.00</p>	<p>A payment of \$75,000 for GOB Series of 2021 was made on 1/1/2022. This was not entered on SOIN 2021-22. The correct ending balance for GOB Series of 2021 was \$9,565,000 at 6/30/2022, not \$9,640,000 as was reported.</p>
50374	<p>ADCS: The total reported for Title IV Revenue Data for Title IV-A-1 and Title IV-B does not equal the revenue reported in account 8517. Please correct or provide a justification.</p> <p>ADCS - Title IV-A-1 and Title IV-B: \$502,534.00 Revenue code 8517: \$519,972.77</p>	<p>\$17,439 of revenue for Title IV-B from 2013-14 was deferred for 9 years. It was moved from deferred revenue to revenue in 2023.</p>
50430	<p>SESS - 2160 Social Work Services: SESS Schedule amounts for Special Education vary from prior year by 40% or more. Correct the data or enter a justification.</p> <p>SESS Schedule 2160: \$251,586.68 Prior Year SESS Schedule 2160: \$100,374.80</p>	<p>In 2023 the district received a \$3,559,007 Ready to Learn Grant. It spent \$49,000 to pay for full time mental health professionals from an independent contractor. In addition. it spent \$84,676 to hire social workers to deal with mental health issues</p>

LEA : 123466403 Pottstown SD

Printed 6/26/2024 8:14:27 AM

Amounts Expressed in Whole Dollars		<u>General Fund</u> <u>(10)</u>	<u>Student Sponsored</u> <u>Activity Fund</u> <u>(21)</u>	<u>Public Purpose Trust</u> <u>(27)</u>	<u>Other Compt Approved</u> <u>(28)</u>	<u>Athletic / Activity</u> <u>(29)</u>
Assets And Deferred Outflows Of Resources						
Assets						
0100	Cash and Cash Equivalents	24,385,095				126,389
0110	Investments	8,541,463				
0120	Taxes Receivable	2,225,595				
0130	Due From Other Funds	575,336				5,514
0141	Due From Other Governments	7,831				
0142	State Revenue Receivable	3,654,457				
0143	Federal Revenue Receivable	3,406,362				
0145	Other Intergovernmental Revenue Receivable					
0146	Due from Primary Government					
0147	Due from Component Unit					
0150	Other Receivables	103,134				
0170	Inventories					
0180	Prepaid Expenses (Expenditures)	282,424				
0190	Other Current Assets					
Total Assets		\$43,181,697				\$131,903
0910	Deferred Outflows of Resources					
Total Assets And Deferred Outflows Of Resources		\$43,181,697				\$131,903

LEA : 123466403 Pottstown SD

Printed 6/26/2024 8:14:27 AM

Amounts Expressed in Whole Dollars		<u>Capital Reserve (690.</u> <u>1850)</u> <u>(31)</u>	<u>Capital Reserve (1431)</u> <u>(32)</u>	<u>Other Capital Projects</u> <u>Fund</u> <u>(39)</u>	<u>Debt Service</u> <u>(40)</u>	<u>Permanent</u> <u>(90)</u>
Assets And Deferred Outflows Of Resources						
Assets						
0100	Cash and Cash Equivalents			2,296,680		
0110	Investments					
0120	Taxes Receivable					
0130	Due From Other Funds					
0141	Due From Other Governments					
0142	State Revenue Receivable					
0143	Federal Revenue Receivable					
0145	Other Intergovernmental Revenue Receivable					
0146	Due from Primary Government					
0147	Due from Component Unit					
0150	Other Receivables					
0170	Inventories					
0180	Prepaid Expenses (Expenditures)					
0190	Other Current Assets					
Total Assets				\$2,296,680		
0910	Deferred Outflows of Resources					
Total Assets And Deferred Outflows Of Resources				\$2,296,680		

LEA : 123466403 Pottstown SD

Printed 6/26/2024 8:14:27 AM

Amounts Expressed in Whole Dollars		<u>Total Governmental</u>
		<u>Funds</u>
Assets And Deferred Outflows Of Resources		
Assets		
0100 Cash and Cash Equivalents	26,808,164	
0110 Investments	8,541,463	
0120 Taxes Receivable	2,225,595	
0130 Due From Other Funds	580,850	
0141 Due From Other Governments	7,831	
0142 State Revenue Receivable	3,654,457	
0143 Federal Revenue Receivable	3,406,362	
0145 Other Intergovernmental Revenue Receivable		
0146 Due from Primary Government		
0147 Due from Component Unit		
0150 Other Receivables	103,134	
0170 Inventories		
0180 Prepaid Expenses (Expenditures)	282,424	
0190 Other Current Assets		
Total Assets	\$45,610,280	
0910 Deferred Outflows of Resources		
Total Assets And Deferred Outflows Of Resources	\$45,610,280	

LEA : 123466403 Pottstown SD

Printed 6/26/2024 8:14:27 AM

Amounts Expressed in Whole Dollars		<u>General Fund</u> <u>(10)</u>	<u>Student Sponsored</u> <u>Activity Fund</u> <u>(21)</u>	<u>Public Purpose Trust</u> <u>(27)</u>	<u>Other Compt Approved</u> <u>(28)</u>	<u>Athletic / Activity</u> <u>(29)</u>
Liabilities And Deferred Inflows Of Resources And Fund Balances						
Liabilities						
0400	Due to Other Funds	2,249,497				
0411	Due to Other Governments					
0412	Due to Primary Government					
0413	Due to Component Unit					
0420	Accounts Payable	2,517,585				9,532
0430	Contracts Payable	325,239				
0440	Current Portion of Long-Term Debt					
0450	Short-Term Payables					
0461	Accrued Salaries and Benefits	4,802,159				
0462	Payroll Deductions and Withholding	294,811				
0480	Unearned Revenues	6,311				
0490	Other Current Liabilities	5,340,056				
Total Liabilities		\$15,535,658				\$9,532
0950	Deferred Inflows of Resources	1,925,011				
Fund Balances						
0810	Nonspendable Fund Balance	137,825				
0820	Restricted Fund Balance					124,421
0830	Committed Fund Balance	13,437,173				
0840	Assigned Fund Balance	740,132				
0850	Unassigned Fund Balance	11,405,898				(2,050)
Total Fund Balances		\$25,721,028				\$122,371
Total Liabilities, Deferred Inflows Of Resources And Fund Balances		\$43,181,697				\$131,903

LEA : 123466403 Pottstown SD

Printed 6/26/2024 8:14:27 AM

Amounts Expressed in Whole Dollars		<u>Capital Reserve (690.</u> <u>1850)</u> <u>(31)</u>	<u>Capital Reserve (1431)</u> <u>(32)</u>	<u>Other Capital Projects</u> <u>Fund</u> <u>(39)</u>	<u>Debt Service</u> <u>(40)</u>	<u>Permanent</u> <u>(90)</u>
Liabilities And Deferred Inflows Of Resources And Fund Balances						
Liabilities						
0400	Due to Other Funds			22,383		
0411	Due to Other Governments					
0412	Due to Primary Government					
0413	Due to Component Unit					
0420	Accounts Payable					
0430	Contracts Payable					
0440	Current Portion of Long-Term Debt					
0450	Short-Term Payables					
0461	Accrued Salaries and Benefits					
0462	Payroll Deductions and Withholding					
0480	Unearned Revenues					
0490	Other Current Liabilities					
Total Liabilities				\$22,383		
0950	Deferred Inflows of Resources					
Fund Balances						
0810	Nonspendable Fund Balance					
0820	Restricted Fund Balance			2,274,297	5,000	
0830	Committed Fund Balance					
0840	Assigned Fund Balance					
0850	Unassigned Fund Balance				(5,000)	
Total Fund Balances				\$2,274,297		
Total Liabilities, Deferred Inflows Of Resources And Fund Balances				\$2,296,680		

LEA : 123466403 Pottstown SD

Printed 6/26/2024 8:14:27 AM

Amounts Expressed in Whole Dollars		<u>Total Governmental</u> <u>Funds</u>
Liabilities And Deferred Inflows Of Resources And Fund Balances		
Liabilities		
0400 Due to Other Funds		2,271,880
0411 Due to Other Governments		
0412 Due to Primary Government		
0413 Due to Component Unit		
0420 Accounts Payable		2,527,117
0430 Contracts Payable		325,239
0440 Current Portion of Long-Term Debt		
0450 Short-Term Payables		
0461 Accrued Salaries and Benefits		4,802,159
0462 Payroll Deductions and Withholding		294,811
0480 Unearned Revenues		6,311
0490 Other Current Liabilities		5,340,056
Total Liabilities		\$15,567,573
0950 Deferred Inflows of Resources		1,925,011
Fund Balances		
0810 Nonspendable Fund Balance		137,825
0820 Restricted Fund Balance		2,403,718
0830 Committed Fund Balance		13,437,173
0840 Assigned Fund Balance		740,132
0850 Unassigned Fund Balance		11,398,848
Total Fund Balances		\$28,117,696
Total Liabilities, Deferred Inflows Of Resources And Fund Balances		\$45,610,280

Amounts Expressed in Whole Dollars	<u>General Fund</u> <u>(10)</u>	<u>Student Sponsored</u> <u>Activity Fund</u> <u>(21)</u>	<u>Public Purpose Trust</u> <u>(27)</u>	<u>Other Compt Approved</u> <u>(28)</u>	<u>Athletic / Activity</u> <u>(29)</u>
Revenues					
6000 Revenue from Local Sources	36,725,541				38,020
7000 Revenue from State Sources	39,082,779				
8000 Revenue from Federal Sources	6,666,519				
Total Revenues	\$82,474,839				\$38,020
Expenditures					
1000 Instruction	49,253,419				
2000 Support Services	24,065,704				
3000 Operation of Non-Instructional Services	1,493,167				40,070
4000 Facilities Acquisition, Construction and Improvement Services	1,433,676				
5110 Debt Service	3,675,716				
5130 Refund of Prior Year Revenues / Receipts	249				
5140 Leases and Other Right-to-Use Arrangements	88,437				
Total Expenditures	\$80,010,368				\$40,070
Excess (Deficiency) Of Revenues Over Expenditures	\$2,464,471				(\$2,050)
Other Financing Sources (Uses)					
9110 Face Value of Bonds Issued					
9120 Proceeds from Refunding of Bonds					
9130 Bond Premiums					
9200 Proceeds from Extended Term Financing, Leases, and Other Right-to-Use Arrangements					
9300 Interfund Transfers - IN	56,489				
9400 Sale of or Compensation for Loss of Fixed Assets					
9710 Transfers from Component Units					
9720 Transfers from Primary Governments					
9910 Other Financing Sources Not Listed in the 9000 Series					
9990 Insurance Recoveries					
5120 Debt Service – Refunded Bonds					
5150 Bond Discounts					
5200 Interfund Transfers – Out					
5300 Transfers Out to Component Units/Primary Governments					
Total Other Financing Sources (Uses)	\$56,489				

Amounts Expressed in Whole Dollars		<u>Capital Reserve (690.</u> <u>1850)</u> <u>(31)</u>	<u>Capital Reserve (1431)</u> <u>(32)</u>	<u>Other Capital Projects</u> <u>Fund</u> <u>(39)</u>	<u>Debt Service</u> <u>(40)</u>	<u>Permanent</u> <u>(90)</u>
Revenues						
6000	Revenue from Local Sources			79,809		
7000	Revenue from State Sources					
8000	Revenue from Federal Sources					
Total Revenues				\$79,809		
Expenditures						
1000	Instruction					
2000	Support Services					
3000	Operation of Non-Instructional Services					
4000	Facilities Acquisition, Construction and Improvement Services					
5110	Debt Service					
5130	Refund of Prior Year Revenues / Receipts					
5140	Leases and Other Right-to-Use Arrangements					
Total Expenditures						
Excess (Deficiency) Of Revenues Over Expenditures				\$79,809		
Other Financing Sources (Uses)						
9110	Face Value of Bonds Issued					
9120	Proceeds from Refunding of Bonds					
9130	Bond Premiums					
9200	Proceeds from Extended Term Financing, Leases, and Other Right-to-Use Arrangements					
9300	Interfund Transfers - IN					
9400	Sale of or Compensation for Loss of Fixed Assets					
9710	Transfers from Component Units					
9720	Transfers from Primary Governments					
9910	Other Financing Sources Not Listed in the 9000 Series					
9990	Insurance Recoveries					
5120	Debt Service – Refunded Bonds					
5150	Bond Discounts					
5200	Interfund Transfers – Out					
5300	Transfers Out to Component Units/Primary Governments					
Total Other Financing Sources (Uses)						

Amounts Expressed in Whole Dollars		<u>Total Governmental Funds</u>
Revenues		
6000	Revenue from Local Sources	36,843,370
7000	Revenue from State Sources	39,082,779
8000	Revenue from Federal Sources	6,666,519
Total Revenues		\$82,592,668
Expenditures		
1000	Instruction	49,253,419
2000	Support Services	24,065,704
3000	Operation of Non-Instructional Services	1,533,237
4000	Facilities Acquisition, Construction and Improvement Services	1,433,676
5110	Debt Service	3,675,716
5130	Refund of Prior Year Revenues / Receipts	249
5140	Leases and Other Right-to-Use Arrangements	88,437
Total Expenditures		\$80,050,438
Excess (Deficiency) Of Revenues Over Expenditures		\$2,542,230
Other Financing Sources (Uses)		
9110	Face Value of Bonds Issued	
9120	Proceeds from Refunding of Bonds	
9130	Bond Premiums	
9200	Proceeds from Extended Term Financing, Leases, and Other Right-to-Use Arrangements	
9300	Interfund Transfers - IN	56,489
9400	Sale of or Compensation for Loss of Fixed Assets	
9710	Transfers from Component Units	
9720	Transfers from Primary Governments	
9910	Other Financing Sources Not Listed in the 9000 Series	
9990	Insurance Recoveries	
5120	Debt Service – Refunded Bonds	
5150	Bond Discounts	
5200	Interfund Transfers – Out	
5300	Transfers Out to Component Units/Primary Governments	
Total Other Financing Sources (Uses)		\$56,489

Amounts Expressed in Whole Dollars		<u>General Fund</u> <u>(10)</u>	<u>Student Sponsored</u> <u>Activity Fund</u> <u>(21)</u>	<u>Public Purpose Trust</u> <u>(27)</u>	<u>Other Compt Approved</u> <u>(28)</u>	<u>Athletic / Activity</u> <u>(29)</u>
Special And Extraordinary Items						
9920	Special Items – Gains					
9930	Extraordinary Items – Gains					
5520	Special Items – Losses					
5530	Extraordinary Items – Losses					
Net Change In Fund Balances		\$2,520,960				(\$2,050)
Fund Balance						
0001	Fund Balance - Beginning of Fiscal Year	23,200,069				124,422
Fund Balance - End Of Year		\$25,721,029				\$122,372

Amounts Expressed in Whole Dollars		<u>Capital Reserve (690.</u> <u>1850)</u> <u>(31)</u>	<u>Capital Reserve (1431)</u> <u>(32)</u>	<u>Other Capital Projects</u> <u>Fund</u> <u>(39)</u>	<u>Debt Service</u> <u>(40)</u>	<u>Permanent</u> <u>(90)</u>
Special And Extraordinary Items						
9920	Special Items – Gains					
9930	Extraordinary Items – Gains					
5520	Special Items – Losses					
5530	Extraordinary Items – Losses					
Net Change In Fund Balances				\$79,809		
Fund Balance						
0001	Fund Balance - Beginning of Fiscal Year			2,194,488		
Fund Balance - End Of Year				\$2,274,297		

Amounts Expressed in Whole Dollars		<u>Total Governmental</u> <u>Funds</u>
Special And Extraordinary Items		
9920	Special Items – Gains	
9930	Extraordinary Items – Gains	
5520	Special Items – Losses	
5530	Extraordinary Items – Losses	
Net Change In Fund Balances		\$2,598,719
Fund Balance		
0001	Fund Balance - Beginning of Fiscal Year	25,518,979
Fund Balance - End Of Year		\$28,117,698

LEA : 123466403 Pottstown SD

Printed 6/26/2024 8:14:35 AM

Amounts Expressed in Whole Dollars		<u>Food Service</u> <u>(51)</u>	<u>Child Care</u> <u>Operations</u> <u>(52)</u>	<u>Other Enterprise</u> <u>(58)</u>	<u>TOTAL</u>	<u>Internal Service</u> <u>(60)</u>
Assets And Deferred Outflows Of Resources						
Current Assets						
0100	Cash and Cash Equivalents	1,441,972			1,441,972	3,090,295
0110	Investments					
0130	Due From Other Funds	83,590			83,590	1,612,953
0141	Due From Other Governments					
0142	State Revenue Receivable	611			611	
0143	Federal Revenue Receivable	18,062			18,062	
0146	Due from Primary Government					
0147	Due from Component Unit					
0150	Other Receivables					
0170	Inventories	21,852			21,852	
0180	Prepaid Expenses (Expenditures)					158,000
0190	Other Current Assets					
Total Current Assets		\$1,566,087			\$1,566,087	\$4,861,248
Noncurrent Assets						
0211	Land					
0212	Site Improvements (Net)					
0220	Buildings and Building Improvements (Net)					
0230	Tangible Property and Intangible Right-To-Use Assets (Net)	243,058			243,058	
0250	Construction in Progress					
0260	Long Term Prepayments					
0290	Other Noncurrent Assets					
Total Noncurrent Assets		\$243,058			\$243,058	
0910	Deferred Outflows of Resources	509,443			509,443	
Total Assets And Deferred Outflows Of Resources		\$2,318,588			\$2,318,588	\$4,861,248

LEA : 123466403 Pottstown SD

Printed 6/26/2024 8:14:35 AM

Amounts Expressed in Whole Dollars	<u>Food Service</u> <u>(51)</u>	<u>Child Care</u> <u>Operations</u> <u>(52)</u>	<u>Other Enterprise</u> <u>(58)</u>	<u>TOTAL</u>	<u>Internal Service</u> <u>(60)</u>
Liabilities And Deferred Inflows Of Resources And Net Position					
Current Liabilities					
0400 Due to Other Funds					
0411 Due to Other Governments					
0413 Due to Component Unit					
0420 Accounts Payable	80,410			80,410	
0430 Contracts Payable					
0440 Current Portion of Long-Term Debt					
0450 Short-Term Payables					
0461 Accrued Salaries and Benefits	28,918			28,918	
0462 Payroll Deductions and Withholding					
0480 Unearned Revenues	776			776	
0490 Other Current Liabilities	1,958			1,958	
Total Current Liabilities	\$112,062			\$112,062	
Noncurrent Liabilities					
0510 Bonds Payable					
0520 Extended-Term Financing Agreements Payable					
0530 Lease and Other Right-To-Use Obligations					
0540 Accumulated Compensated Absences	21,915			21,915	
0550 Authority Lease Obligations					
0560 Other Post-Employment Benefits (OPEB)	138,422			138,422	
0570 Net Pension Liability	1,666,958			1,666,958	
0599 Other Noncurrent Liabilities					
Total Noncurrent Liabilities	\$1,827,295			\$1,827,295	
Total Liabilities	\$1,939,357			\$1,939,357	
0950 Deferred Inflows of Resources	130,645			130,645	
Net Position					
0791 Net Investment in Capital Assets	62,203			62,203	
0008 Restricted Net Position (0792 – 0798)					
0799 Unrestricted Net Position	186,383			186,383	4,861,248
Total Net Position	\$248,586			\$248,586	\$4,861,248
Total Liabilities And Deferred Inflows Of Resources And Net Position	\$2,318,588			\$2,318,588	\$4,861,248

Amounts Expressed in Whole Dollars		<u>Food Service</u> <u>(51)</u>	<u>Child Care Operations</u> <u>(52)</u>	<u>Other Enterprise</u> <u>(58)</u>	<u>TOTAL</u>	<u>Internal Service</u> <u>(60)</u>
Operating Revenues						
6600	Food Service Revenue	49,389			49,389	
0071	Charges for Services					6,547,699
0072	Other Operating Revenue					
Total Operating Revenues		\$49,389			\$49,389	\$6,547,699
Operating Expenses						
100	Personnel Services – Salaries	597,721			597,721	
200	Personnel Services – Employee Benefits	288,718			288,718	6,824,102
300	Purchased Professional and Technical Services	955			955	
400	Purchased Property Services	12,992			12,992	
500	Other Purchased Services	23,841			23,841	
600	Supplies	1,318,657			1,318,657	
740	Depreciation	28,816			28,816	
770	Amortization Expense					
810	Dues and Fees	1,513			1,513	265,571
880	Refunds of Prior Years' Receipts					
890	Miscellaneous Expenditures	2,791			2,791	
Total Operating Expenses		\$2,276,004			\$2,276,004	\$7,089,673
Operating Income (Loss)		(\$2,226,615)			(\$2,226,615)	(\$541,974)
Non Operating Revenues (Expenses)						
6500	Earnings on Investments	33,351			33,351	108,026
6830	Federal Revenue from Intermediary Sources					
6920	Contributions and Donations from Private Sources					
6930	Gains or Losses on Sale of Fixed Assets					
6991	Refunds of a Prior Year Expenditure					
7000	Revenue from State Sources	207,473			207,473	
8000	Revenue from Federal Sources	2,643,513			2,643,513	
9990	Insurance Recoveries					
820	Claims and Judgments Against the LEA					
830	Interest					
TOTAL Non Operating Revenues (Expenses)		\$2,884,337			\$2,884,337	\$108,026
Income (Loss) Before Contributions And Transfers		\$657,722			\$657,722	(\$433,948)

Amounts Expressed in Whole Dollars		<u>Food Service</u> <u>(51)</u>	<u>Child Care Operations</u> <u>(52)</u>	<u>Other Enterprise</u> <u>(58)</u>	<u>TOTAL</u>	<u>Internal Service</u> <u>(60)</u>
Contributions, Transfers, and Special and Extraordinary Items						
5200	Interfund Transfers – Out	56,490			56,490	
5300	Transfers Out to Component Units/Primary Governments					
5520	Special Items – Losses					
5530	Extraordinary Items – Losses					
9300	Interfund Transfers - IN					
9500	Capital Contributions					
9700	Transfers IN From Component Units/Primary Governments					
9920	Special Items – Gains					
9930	Extraordinary Items – Gains					
Change In Net Position		\$601,232			\$601,232	(\$433,948)
0002	Net Position - Beginning of Fiscal Year	(352,647)			(352,647)	5,295,196
0003	Accounting Changes / Residual Equity Transfers					
Net Position - End Of Year		\$248,585			\$248,585	\$4,861,248

LEA : 123466403 Pottstown SD

Printed 6/26/2024 8:14:44 AM

Amounts Expressed in Whole Dollars		<u>Food Service</u> <u>(51)</u>	<u>Child Care Operations</u> <u>(52)</u>	<u>Other Enterprise</u> <u>(58)</u>	<u>TOTAL</u>	<u>Internal Service(60)</u>
Cash Flows From Operating Activities						
0011	Cash Receipts From Users	47,448			47,448	6,467,666
0012	Cash Receipts From Assessments Made to Other Funds					
0013	Cash Receipts From Earnings on Investments					
0014	Cash Receipts From Other Operating Revenue					
0015	Cash Payments To Employees For Services	1,395,700			1,395,700	
0016	Cash Payments For Insurance Claims					6,575,692
0017	Cash Payments To Suppliers For Goods and Services	1,164,762			1,164,762	
0018	Cash Payments For Other Operating Expenses					
Net Cash Provided By (Used For) Operating Activities		(\$2,513,014)			(\$2,513,014)	(\$108,026)
Cash Flows From Non-Capital Financing Activities						
0021	Receipts From Local Sources - 6000					
0022	Receipts From State Sources - 7000	208,032			208,032	
0023	Receipts From Federal Sources -8000	2,523,909			2,523,909	
0024	Notes and Loans Received (Repaid)					
0025	Interest Paid on Notes/Loans - 5100-830					
0026	Operating Transfers In (Out)/Residual Equity Trans					
0027	Operating Transfers In (Out) Primary Government / Comp Unit	(56,489)			(56,489)	
0028	Receipts From Refund of Prior Year Expenditures - 6991					
0029	Special and Extraordinary Gains (losses)					
0030	Receipts from Insurance Recoveries -9990					
Net Cash Prov By (Used for) Non-Capital Financing Activities		\$2,675,452			\$2,675,452	
Cash Flows From Capital and Related Financing Activities						
0031	Payments For Fac Acq, Const, and Imp - 4000	(86,329)			(86,329)	
0032	Gain / (Loss) on Sale of Fixed Assets - 6930					
0033	Proceeds From Extended Term Financing - 9200					
0034	Principal Paid on Financing Agreements					
0035	Interest Paid on Financing Agreements - 5100-830					
0036	(Inc) Dec in Contributed Capital					
Net Cash Prov By (Used for) Capital and Related Financing Activities		(\$86,329)			(\$86,329)	
Cash Flows From Investing Activities						
0041	Earnings on Investments - 6500	33,351			33,351	108,026
0042	Purchase of Inv Securities / Deposits to Inv Pools					
0043	Receipts From Investment Pool Withdrawals					
0044	Proceeds from Sale and Maturity of Inv Securities					

LEA : 123466403 Pottstown SD

Printed 6/26/2024 8:14:44 AM

0045 Loans Received (Paid)

Net Cash Prov By (Used for) Investing Activities	\$33,351	\$33,351	\$108,026
--	----------	----------	-----------

LEA : 123466403 Pottstown SD

Printed 6/26/2024 8:14:44 AM

	<u>Food Service</u> <u>(51)</u>	<u>Child Care Operations</u> <u>(52)</u>	<u>Other Enterprise</u> <u>(58)</u>	<u>TOTAL</u>	<u>Internal Service</u> <u>(60)</u>
Net Increase (Decrease) in Cash Flows	109,460			109,460	
0004 Cash and Cash Equivalents Beginning of Year	1,332,512			1,332,512	
Cash and Cash Equivalents at Year End	\$1,441,972			\$1,441,972	
Reconciliation of Operating Income (Loss) To Net Cash Provided by (Used For) Operating Activities					
0005 Operating Income (Loss) per REP	(2,226,615)			(2,226,615)	(541,974)
Adjustments					
0051 Depreciation and Net Amortization	28,816			28,816	
0052 Provision for Uncollectible Accounts					
0053 Other Adjustments	139,177			139,177	
Effect of Changes in Assets, Liabilities, Deferred Outflows and Deferred Inflows					
0054 (Inc) Dec In Accounts Receivable (0120-0150)	84			84	
0055 Advances to Other Funds					
0056 (Inc) Dec in Inventories (0170)	6,148			6,148	
0057 (Inc) Dec in Prepaid Expenses (0180)					(27,000)
0058 (Inc) Dec in Other Current or Noncurrent Assets	(371,741)			(371,741)	460,948
0064 Deferred Outflows (0910)	(165,241)			(165,241)	
0059 Inc (Dec) in Accounts Payable (0400-0450)	50,663			50,663	
0060 Inc (Dec) in Accrued Salaries/Benefits (0461)	(5,509)			(5,509)	
0065 Inc (Dec) in Net Pension Liabilities (0570)	836,096			836,096	
0066 Inc (Dec) in Other Postemp Benefit Oblig (0560)	(97,562)			(97,562)	
0061 Inc (Dec) in Payroll Deductions/Withholding (0462)					
0062 Inc (Dec) in Unearned Revenue (0480)	(2,025)			(2,025)	
0063 Inc (Dec) in Other Current or Noncurrent Liabilities	(2,663)			(2,663)	
0067 Deferred Inflows (0950)	(702,641)			(702,641)	
Total Adjustments	(\$286,398)			(\$286,398)	\$433,948
Cash Provided By (Used for) Total	(\$2,513,013)			(\$2,513,013)	(\$108,026)

COMBINED STATEMENT OF CASH FLOWS
SCHEDULE OF NONCASH INVESTING, CAPITAL, AND FINANCING ACTIVITIES

Explanation of Transaction and Balance Sheet Effect	Amount
Total	

LEA : 123466403 Pottstown SD

Printed 6/26/2024 8:14:46 AM

Amounts Expressed in Whole Dollars		<u>Private Purpose Trust</u> <u>(71)</u>	<u>Investment Trust</u> <u>(72)</u>	<u>Pension Trust</u> <u>(73)</u>	<u>Student Activity Custodial</u> <u>(81)</u>
Assets And Deferred Outflows Of Resources					
Assets					
0100	Cash and Cash Equivalents	182,540			
0110	Investments				
0130	Due From Other Funds				
0140	Due from Other Governments, Primary Government and Component Units				
0150	Other Receivables				
0170	Inventories				
0180	Prepaid Expenses (Expenditures)				
0190	Other Current Assets				
0220	Buildings and Building Improvements (Net)				
0230	Tangible Property and Intangible Right-To-Use Assets (Net)				
Total Assets		\$182,540			
0910	Deferred Outflows of Resources				
Total Assets And Deferred Outflows Of Resources		\$182,540			

LEA : 123466403 Pottstown SD

Printed 6/26/2024 8:14:46 AM

Amounts Expressed in Whole Dollars		<u>Other Custodial</u> <u>(89)</u>	<u>Fiduciary Component Units</u> <u>(98)</u>	<u>Total Fiduciary Funds</u>
Assets And Deferred Outflows Of Resources				
Assets				
0100	Cash and Cash Equivalents			182,540
0110	Investments			
0130	Due From Other Funds			
0140	Due from Other Governments, Primary Government and Component Units			
0150	Other Receivables			
0170	Inventories			
0180	Prepaid Expenses (Expenditures)			
0190	Other Current Assets			
0220	Buildings and Building Improvements (Net)			
0230	Tangible Property and Intangible Right-To-Use Assets (Net)			
Total Assets				\$182,540
0910	Deferred Outflows of Resources			
Total Assets And Deferred Outflows Of Resources				\$182,540

LEA : 123466403 Pottstown SD

Printed 6/26/2024 8:14:46 AM

Amounts Expressed in Whole Dollars		<u>Private Purpose Trust</u>	<u>Investment Trust</u>	<u>Pension Trust</u>	<u>Student Activity Custodial</u>
		<u>(71)</u>	<u>(72)</u>	<u>(73)</u>	<u>(81)</u>
Liabilities, Deferred Inflows Of Resources And Net Position					
Liabilities					
0400	Due to Other Funds				
0410	Due to Other Governments, Primary Government and Component Units				
0420	Accounts Payable				
0430	Contracts Payable				
0450	Short-Term Payables				
0460	Payroll Accruals and Withholdings				
0480	Unearned Revenues				
0490	Other Current Liabilities				
Total Liabilities					
0950	Deferred Inflows of Resources				
Net Position					
0791	Net Investment in Capital Assets				
0009	Restricted Net Position (0792 – 0798)	446,705			
0799	Unrestricted Net Position	(264,165)			
Total Net Position		\$182,540			
Total Liabilities, Deferred Inflows Of Resources And Net Position		\$182,540			

LEA : 123466403 Pottstown SD

Printed 6/26/2024 8:14:46 AM

Amounts Expressed in Whole Dollars		<u>Other Custodial</u> <u>(89)</u>	<u>Fiduciary Component Units</u> <u>(98)</u>	<u>Total Fiduciary Funds</u>
Liabilities, Deferred Inflows Of Resources And Net Position				
Liabilities				
0400	Due to Other Funds			
0410	Due to Other Governments, Primary Government and Component Units			
0420	Accounts Payable			
0430	Contracts Payable			
0450	Short-Term Payables			
0460	Payroll Accruals and Withholdings			
0480	Unearned Revenues			
0490	Other Current Liabilities			
Total Liabilities				
0950	Deferred Inflows of Resources			
Net Position				
0791	Net Investment in Capital Assets			
0009	Restricted Net Position (0792 – 0798)			446,705
0799	Unrestricted Net Position			(264,165)
Total Net Position				\$182,540
Total Liabilities, Deferred Inflows Of Resources And Net Position				\$182,540

LEA : 123466403 Pottstown SD

Printed 6/26/2024 8:14:47 AM

Amounts Expressed in Whole Dollars		<u>Private Purpose Trust</u> <u>(71)</u>	<u>Investment Trust</u> <u>(72)</u>	<u>Pension Trust</u> <u>(73)</u>	<u>Student Activity</u> <u>Custodial</u> <u>(81)</u>	<u>Other Custodial</u> <u>(89)</u>	<u>Fiduciary Component</u> <u>Units</u> <u>(98)</u>
Additions							
0091	Gifts and Contributions	66,200					
0095	Net Investment Earnings	2,961					
0092	Other Additions						
Deductions							
0093	Scholarships Awarded						
0094	Other Deductions	43,768					
Change In Net Position		\$25,393					
0006	Net Position – Beginning of Fiscal Year	157,147					
0007	Net Position Held in Trust for Pension Benefits						
Net Position - End of Fiscal Year		\$182,540					

LEA : 123466403 Pottstown SD

Printed 6/26/2024 8:14:47 AM

Amounts Expressed in Whole Dollars		<u>Total Fiduciary</u>
		<u>Funds</u>
Additions		
0091	Gifts and Contributions	66,200
0095	Net Investment Earnings	2,961
0092	Other Additions	
Deductions		
0093	Scholarships Awarded	
0094	Other Deductions	43,768
Change In Net Position		\$25,393
0006	Net Position – Beginning of Fiscal Year	157,147
0007	Net Position Held in Trust for Pension Benefits	
Net Position - End of Fiscal Year		\$182,540

	Revenue Reported In Current Year	Current Year Tax Accrual	Prior Year Tax Accrual	Taxes Collected In Current Year
Revenue from Local Sources				
6111 Current Real Estate Taxes	28,717,381.32			28,717,381.32
6112 Interim Real Estate Taxes	335,864.43			335,864.43
6113 Public Utility Realty Taxes	32,711.26			32,711.26
6114 Payments in Lieu of Current Taxes - State / Local	28,156.23			28,156.23
6120 Current Per Capita Taxes, Section 679	30,159.62			30,159.62
6141 Current Act 511 Per Capita Taxes	30,159.61			30,159.61
6143 Current Act 511 Local Services Taxes	44,011.42			44,011.42
6151 Current Act 511 Earned Income Taxes	2,832,671.81			2,832,671.81
6152 Current Act 511 Occupation Taxes	174,567.06			174,567.06
6153 Current Act 511 Real Estate Transfer Taxes	835,941.63			835,941.63
6411 Delinquent Real Estate Taxes	871,417.54			871,417.54
6420 Delinquent Per Capita Taxes, Section 679	28,820.64			28,820.64
6440 Delinquent Local Enabling Taxes - Flat Rate Assessments	28,820.63			28,820.63
6452 Delinquent Act 511 Occupation Taxes	240,198.32			240,198.32
6500 Earnings on Investments	577,834.28			
6700 Revenues from LEA Activities	19,856.66			
6831 Federal Revenue Received from Other Pennsylvania Public LEAs	5,163.00			
6832 Federal IDEA Revenue Received as Pass Through	858,685.65			
6833 Federal ARP Act IDEA Revenue Received as Pass Through	180,148.38			
6910 Rentals	206,429.37			
6920 Contributions and Donations from Private Sources	25,103.29			
6941 Regular Day School Tuition	41,674.65			
6944 Receipts from Other LEAs in Pennsylvania - Education	121,486.35			
6961 Transportation Services Provided Other Pennsylvania LEAs	11,807.41			
6991 Refunds of a Prior Year Expenditure	42,310.31			
6999 Other Revenues Not Specified Above	404,160.22			
TOTAL Revenue from Local Sources	\$36,725,541.09			\$34,230,881.52

	Revenue Reported In Current Year			
<u>Revenue from State Sources</u>				
7111 Basic Education Funding-Formula	15,562,801.65			
7112 Basic Education Funding-Social Security	1,315,323.34			
7120 Level Up Supplement	1,591,794.79			
7160 Tuition for Orphans Subsidy	94,740.33			
7220 Vocational Education	486,542.33			
7271 Special Education funds for School-Aged Pupils	3,024,776.75			
7292 Pre-K Counts	2,820,000.00			
7311 Pupil Transportation Subsidy	445,328.52			
7312 Nonpublic and Charter School Pupil Transportation Subsidy	11,550.00			
7320 Rental and Sinking Fund Payments / Building Reimbursement Subsidy	1,108,305.98			
7330 Health Services (Medical, Dental, Nurse, Act 25)	60,647.84			
7340 State Property Tax Reduction Allocation	2,040,708.11			
7361 School Safety and Security Grants	74,677.81			
7505 Ready to Learn Block Grant	3,059,007.00			
7509 Supplemental Equipment Grants	32,082.71			
7820 State Share of Retirement Contributions	7,354,492.16			
TOTAL Revenue from State Sources	\$39,082,779.32			

	Revenue Reported In Current Year			
<u>Revenue from Federal Sources</u>				
8514 Title I - Improving the Academic Achievement of the Disadvantaged	1,406,463.00			
8515 Title II - Preparing, Training, and Recruiting High Quality Teachers and Principals	135,506.00			
8517 Title IV - 21st Century Schools	519,972.77			
8521 Vocational Education - Operating Expenditures	67,330.00			
8690 Other Restricted Federal Grants-in-Aid Through the Commonwealth of PA	537,866.39			
8743 ESSER II - Elementary and Secondary School Emergency Relief Fund	1,764,888.04			
8744 ARP ESSER - Elementary and Secondary School Emergency Relief Fund	1,586,445.52			
8747 ARP ECF - Emergency Connectivity Fund	16,800.00			
8751 ARP ESSER Learning Loss	341,386.91			
8752 ARP ESSER Summer Programs	108,235.00			
8753 ARP ESSER Afterschool Programs	45,480.56			
8754 ARP ESSER Homeless Children and Youth Funds	68,293.00			
8820 Medical Assistance Reimbursement for Administrative Claiming (Quarterly) Program	67,851.58			
TOTAL Revenue from Federal Sources	\$6,666,518.77			

					Revenue Reported In Current Year		
<u>Other Financing Sources</u>							
9350	Enterprise Fund Transfers				56,489.49		
TOTAL Other Financing Sources					\$56,489.49		
TOTAL FROM ALL SOURCES					\$82,531,328.67		\$34,230,881.52

LEA : 123466403 Pottstown SD

Printed 6/26/2024 8:14:50 AM

	<u>General Fund (10)</u>	<u>Student Sponsored Activity Fund (21)</u>	<u>Public Purpose Trust (27)</u>	<u>Other Compt Approved (28)</u>	<u>Athletic / Activity (29)</u>	<u>Capital Reserve (690, 1850) (31)</u>
6000 Revenue from Local Sources						
6111 Current Real Estate Taxes	28,717,381.32					
6112 Interim Real Estate Taxes	335,864.43					
6113 Public Utility Realty Taxes	32,711.26					
6114 Payments in Lieu of Current Taxes - State / Local	28,156.23					
6120 Current Per Capita Taxes, Section 679	30,159.62					
6141 Current Act 511 Per Capita Taxes	30,159.61					
6143 Current Act 511 Local Services Taxes	44,011.42					
6151 Current Act 511 Earned Income Taxes	2,832,671.81					
6152 Current Act 511 Occupation Taxes	174,567.06					
6153 Current Act 511 Real Estate Transfer Taxes	835,941.63					
6411 Delinquent Real Estate Taxes	871,417.54					
6420 Delinquent Per Capita Taxes, Section 679	28,820.64					
6440 Delinquent Local Enabling Taxes - Flat Rate Assessments	28,820.63					
6452 Delinquent Act 511 Occupation Taxes	240,198.32					
6500 Earnings on Investments	577,834.28				2,234.27	
6700 Revenues from LEA Activities	19,856.66				35,785.36	
6831 Federal Revenue Received from Other Pennsylvania Public LEAs	5,163.00					
6832 Federal IDEA Revenue Received as Pass Through	858,685.65					
6833 Federal ARP Act IDEA Revenue Received as Pass Through	180,148.38					
6910 Rentals	206,429.37					
6920 Contributions and Donations from Private Sources	25,103.29					
6941 Regular Day School Tuition	41,674.65					
6944 Receipts from Other LEAs in Pennsylvania - Education	121,486.35					
6961 Transportation Services Provided Other Pennsylvania LEAs	11,807.41					
6991 Refunds of a Prior Year Expenditure	42,310.31					
6999 Other Revenues Not Specified Above	404,160.22					
6000 Total Revenue from Local Sources	\$36,725,541.09				\$38,019.63	
7000 Revenue from State Sources						
7111 Basic Education Funding-Formula	15,562,801.65					
7112 Basic Education Funding-Social Security	1,315,323.34					
7120 Level Up Supplement	1,591,794.79					
7160 Tuition for Orphans Subsidy	94,740.33					
7220 Vocational Education	486,542.33					
7271 Special Education funds for School-Aged Pupils	3,024,776.75					
7292 Pre-K Counts	2,820,000.00					

LEA : 123466403 Pottstown SD

Printed 6/26/2024 8:14:50 AM

	<u>Capital Reserve</u> <u>(1431) (32)</u>	<u>Other Capital</u> <u>Projects Fund (39)</u>	<u>Debt Service (40)</u>	<u>Permanent (90)</u>	<u>Total</u>
6000 Revenue from Local Sources					
6111 Current Real Estate Taxes					28,717,381.32
6112 Interim Real Estate Taxes					335,864.43
6113 Public Utility Realty Taxes					32,711.26
6114 Payments in Lieu of Current Taxes - State / Local					28,156.23
6120 Current Per Capita Taxes, Section 679					30,159.62
6141 Current Act 511 Per Capita Taxes					30,159.61
6143 Current Act 511 Local Services Taxes					44,011.42
6151 Current Act 511 Earned Income Taxes					2,832,671.81
6152 Current Act 511 Occupation Taxes					174,567.06
6153 Current Act 511 Real Estate Transfer Taxes					835,941.63
6411 Delinquent Real Estate Taxes					871,417.54
6420 Delinquent Per Capita Taxes, Section 679					28,820.64
6440 Delinquent Local Enabling Taxes - Flat Rate Assessments					28,820.63
6452 Delinquent Act 511 Occupation Taxes					240,198.32
6500 Earnings on Investments		79,809.40			659,877.95
6700 Revenues from LEA Activities					55,642.02
6831 Federal Revenue Received from Other Pennsylvania Public LEAs					5,163.00
6832 Federal IDEA Revenue Received as Pass Through					858,685.65
6833 Federal ARP Act IDEA Revenue Received as Pass Through					180,148.38
6910 Rentals					206,429.37
6920 Contributions and Donations from Private Sources					25,103.29
6941 Regular Day School Tuition					41,674.65
6944 Receipts from Other LEAs in Pennsylvania - Education					121,486.35
6961 Transportation Services Provided Other Pennsylvania LEAs					11,807.41
6991 Refunds of a Prior Year Expenditure					42,310.31
6999 Other Revenues Not Specified Above					404,160.22
6000 Total Revenue from Local Sources		\$79,809.40			\$36,843,370.12
7000 Revenue from State Sources					
7111 Basic Education Funding-Formula					15,562,801.65
7112 Basic Education Funding-Social Security					1,315,323.34
7120 Level Up Supplement					1,591,794.79
7160 Tuition for Orphans Subsidy					94,740.33
7220 Vocational Education					486,542.33
7271 Special Education funds for School-Aged Pupils					3,024,776.75
7292 Pre-K Counts					2,820,000.00

LEA : 123466403 Pottstown SD

Printed 6/26/2024 8:14:50 AM

	<u>General Fund (10)</u>	<u>Student Sponsored Activity Fund (21)</u>	<u>Public Purpose Trust (27)</u>	<u>Other Compt Approved (28)</u>	<u>Athletic / Activity (29)</u>	<u>Capital Reserve (690, 1850) (31)</u>
7000 Revenue from State Sources						
7311 Pupil Transportation Subsidy	445,328.52					
7312 Nonpublic and Charter School Pupil Transportation Subsidy	11,550.00					
7320 Rental and Sinking Fund Payments / Building Reimbursement Subsidy	1,108,305.98					
7330 Health Services (Medical, Dental, Nurse, Act 25)	60,647.84					
7340 State Property Tax Reduction Allocation	2,040,708.11					
7361 School Safety and Security Grants	74,677.81					
7505 Ready to Learn Block Grant	3,059,007.00					
7509 Supplemental Equipment Grants	32,082.71					
7820 State Share of Retirement Contributions	7,354,492.16					
7000 Total Revenue from State Sources	\$39,082,779.32					
8000 Revenue from Federal Sources						
8514 Title I - Improving the Academic Achievement of the Disadvantaged	1,406,463.00					
8515 Title II - Preparing, Training, and Recruiting High Quality Teachers and Principals	135,506.00					
8517 Title IV - 21st Century Schools	519,972.77					
8521 Vocational Education - Operating Expenditures	67,330.00					
8690 Other Restricted Federal Grants-in-Aid Through the Commonwealth of PA	537,866.39					
8743 ESSER II - Elementary and Secondary School Emergency Relief Fund	1,764,888.04					
8744 ARP ESSER - Elementary and Secondary School Emergency Relief Fund	1,586,445.52					
8747 ARP ECF - Emergency Connectivity Fund	16,800.00					
8751 ARP ESSER Learning Loss	341,386.91					
8752 ARP ESSER Summer Programs	108,235.00					
8753 ARP ESSER Afterschool Programs	45,480.56					
8754 ARP ESSER Homeless Children and Youth Funds	68,293.00					
8820 Medical Assistance Reimbursement for Administrative Claiming (Quarterly) Program	67,851.58					
8000 Total Revenue from Federal Sources	\$6,666,518.77					
9000 Other Financing Sources						
9350 Enterprise Fund Transfers	56,489.49					
9000 Total Other Financing Sources	\$56,489.49					
Total From All Sources	\$82,531,328.67				\$38,019.63	

LEA : 123466403 Pottstown SD

Printed 6/26/2024 8:14:50 AM

	<u>Capital Reserve</u> <u>(1431) (32)</u>	<u>Other Capital</u> <u>Projects Fund (39)</u>	<u>Debt Service (40)</u>	<u>Permanent (90)</u>	<u>Total</u>
7000 Revenue from State Sources					
7311 Pupil Transportation Subsidy					445,328.52
7312 Nonpublic and Charter School Pupil Transportation Subsidy					11,550.00
7320 Rental and Sinking Fund Payments / Building Reimbursement Subsidy					1,108,305.98
7330 Health Services (Medical, Dental, Nurse, Act 25)					60,647.84
7340 State Property Tax Reduction Allocation					2,040,708.11
7361 School Safety and Security Grants					74,677.81
7505 Ready to Learn Block Grant					3,059,007.00
7509 Supplemental Equipment Grants					32,082.71
7820 State Share of Retirement Contributions					7,354,492.16
7000 Total Revenue from State Sources					\$39,082,779.32
8000 Revenue from Federal Sources					
8514 Title I - Improving the Academic Achievement of the Disadvantaged					1,406,463.00
8515 Title II - Preparing, Training, and Recruiting High Quality Teachers and Principals					135,506.00
8517 Title IV - 21st Century Schools					519,972.77
8521 Vocational Education - Operating Expenditures					67,330.00
8690 Other Restricted Federal Grants-in-Aid Through the Commonwealth of PA					537,866.39
8743 ESSER II - Elementary and Secondary School Emergency Relief Fund					1,764,888.04
8744 ARP ESSER - Elementary and Secondary School Emergency Relief Fund					1,586,445.52
8747 ARP ECF - Emergency Connectivity Fund					16,800.00
8751 ARP ESSER Learning Loss					341,386.91
8752 ARP ESSER Summer Programs					108,235.00
8753 ARP ESSER Afterschool Programs					45,480.56
8754 ARP ESSER Homeless Children and Youth Funds					68,293.00
8820 Medical Assistance Reimbursement for Administrative Claiming (Quarterly) Program					67,851.58
8000 Total Revenue from Federal Sources					\$6,666,518.77
9000 Other Financing Sources					
9350 Enterprise Fund Transfers					56,489.49
9000 Total Other Financing Sources					\$56,489.49
Total From All Sources		\$79,809.40			\$82,649,157.70

LEA : 123466403 Pottstown SD

Printed 6/26/2024 8:14:54 AM

	<u>General Fund (10)</u>	<u>Student Sponsored Activity Fund (21)</u>	<u>Public Purpose Trust (27)</u>	<u>Other Compt Approved (28)</u>	<u>Athletic / Activity (29)</u>	<u>Capital Reserve (690. 1850) (31)</u>
Revenue from Local Sources	36,725,541.09				38,019.63	
Revenue from State Sources	39,082,779.32					
Revenue from Federal Sources	6,666,518.77					
Other Financing Sources	56,489.49					
Total From All Sources	\$82,531,328.67				\$38,019.63	

LEA : 123466403 Pottstown SD

Printed 6/26/2024 8:14:54 AM

	<u>Capital Reserve (1431)</u> <u>(32)</u>	<u>Other Capital Projects</u> <u>Fund (39)</u>	<u>Debt Service (40)</u>	<u>Permanent (90)</u>	<u>Total</u>
Revenue from Local Sources		79,809.40			36,843,370.12
Revenue from State Sources					39,082,779.32
Revenue from Federal Sources					6,666,518.77
Other Financing Sources					56,489.49
Total From All Sources		\$79,809.40			\$82,649,157.70

LEA : 123466403 Pottstown SD

Printed 6/26/2024 8:14:59 AM

General Fund (10)

1000 Instruction		Total
100 <u>Personnel Services – Salaries</u>		
100 Personnel Services – Salaries		20,520,161.81
Total Personnel Services – Salaries		\$20,520,161.81
200 <u>Personnel Services – Employee Benefits</u>		
210 Group Insurance – Contracted Provider		4,002,045.57
220 Social Security Contributions		1,509,357.89
230 PSERS Retirement Contributions		7,190,607.68
250 Unemployment Compensation		11,625.49
260 Workers' Compensation		104,627.85
299 All Other Employee Benefits		547,176.86
Total Personnel Services – Employee Benefits		\$13,365,441.34
300 <u>Purchased Professional and Technical Services</u>		
322 Professional Educational Services – Ius		2,114,281.84
323 Professional Educational Services – Other Educational Agencies		107,468.68
329 Professional Educational Services – Other		536,774.39
330 Other Professional Services		366,822.91
390 Other Purchased Professional and Technical Services		274,477.65
Total Purchased Professional and Technical Services		\$3,399,825.47
400 <u>Purchased Property Services</u>		
410 Cleaning Services		8,286.53
430 Repairs and Maintenance Services		7,053.97
440 Rentals		119,634.31
Total Purchased Property Services		\$134,974.81
500 <u>Other Purchased Services</u>		
510 Student Transportation Services		53,897.16
530 Communications		15,204.41
549 Other Advertising/Public Relations		3,094.00
561 Tuition To Other School Districts Within the State		150,080.50
562 Tuition To Pennsylvania Charter Schools		5,145,803.10
563 Tuition To Nonpublic Schools		1,807,150.53
567 Tuition To Approved Private Schools (APS) and PA Chartered Schools for the Deaf and Blind		339,053.06
568 Tuition To Private Residential Rehabilitative Institutions (PRRI) [In-State] and Detention Centers		51,890.27
580 Travel		78,057.99
594 IU Payment By Withholding for Institutionalized Children's Programs – Special Classes		6,852.46
Total Other Purchased Services		\$7,651,083.48
600 <u>Supplies</u>		
610 General Supplies		911,281.58
630 Food		3,367.31
640 Books and Periodicals		1,281,732.93
650 Supplies & Fees – Technology Related		603,695.84
Total Supplies		\$2,800,077.66
700 <u>Property</u>		
752 Capital Equipment – Original and Additional		140,760.35

LEA : 123466403 Pottstown SD

Printed 6/26/2024 8:14:59 AM

General Fund (10)

1000 Instruction		<u>Total</u>
Total Property		\$140,760.35
800 <u>Other Objects</u>		
810 Dues and Fees		4,380.00
890 Miscellaneous Expenditures		1,236,714.32
Total Other Objects		\$1,241,094.32
Total 1000 Instruction		\$49,253,419.24

LEA : 123466403 Pottstown SD

Printed 6/26/2024 8:14:59 AM

General Fund (10)

1100 Regular Programs – Elementary / Secondary

	Elementary	Secondary	Federal	Total
100 Personnel Services – Salaries				
100 Personnel Services – Salaries	6,886,044.98	4,590,696.65	1,775,851.56	13,252,593.19
Total Personnel Services – Salaries	\$6,886,044.98	\$4,590,696.65	\$1,775,851.56	\$13,252,593.19
200 Personnel Services – Employee Benefits				
210 Group Insurance – Contracted Provider	1,220,585.78	813,723.86	427,798.54	2,462,108.18
220 Social Security Contributions	508,278.44	338,852.29	129,138.61	976,269.34
230 PSERS Retirement Contributions	2,640,696.80	1,760,464.53	249,378.39	4,650,539.72
250 Unemployment Compensation	6,574.51	4,383.01		10,957.52
260 Workers' Compensation	62,776.71	41,851.14		104,627.85
299 All Other Employee Benefits	78,952.00	52,634.67	315,000.00	446,586.67
Total Personnel Services – Employee Benefits	\$4,517,864.24	\$3,011,909.50	\$1,121,315.54	\$8,651,089.28
300 Purchased Professional and Technical Services				
322 Professional Educational Services – Ius	6,660.00	4,440.00		11,100.00
323 Professional Educational Services – Other Educational Agencies	18.00	12.00		30.00
329 Professional Educational Services – Other	37,177.62	24,785.08	131,328.44	193,291.14
330 Other Professional Services	333.24	222.16	24,500.00	25,055.40
390 Other Purchased Professional and Technical Services	4,136.27	2,757.52	5,500.00	12,393.79
Total Purchased Professional and Technical Services	\$48,325.13	\$32,216.76	\$161,328.44	\$241,870.33
400 Purchased Property Services				
430 Repairs and Maintenance Services	3,650.92	2,433.95		6,084.87
Total Purchased Property Services	\$3,650.92	\$2,433.95		\$6,084.87
500 Other Purchased Services				
510 Student Transportation Services	1,029.41	686.27		1,715.68
530 Communications			609.21	609.21
562 Tuition To Pennsylvania Charter Schools	1,481,869.58	987,913.06		2,469,782.64
580 Travel	36,623.09	24,415.40	5,334.01	66,372.50
Total Other Purchased Services	\$1,519,522.08	\$1,013,014.73	\$5,943.22	\$2,538,480.03
600 Supplies				
610 General Supplies	119,428.85	79,619.24	96,583.00	295,631.09
640 Books and Periodicals	194,259.53	129,506.35	806,357.17	1,130,123.05
650 Supplies & Fees – Technology Related	355,020.50	236,680.34	4,995.00	596,695.84
Total Supplies	\$668,708.88	\$445,805.93	\$907,935.17	\$2,022,449.98
700 Property				
752 Capital Equipment – Original and Additional	77,618.40	51,745.60		129,364.00
Total Property	\$77,618.40	\$51,745.60		\$129,364.00
Total 1100 Regular Programs – Elementary / Secondary	\$13,721,734.63	\$9,147,823.12	\$3,972,373.93	\$26,841,931.68

LEA : 123466403 Pottstown SD

Printed 6/26/2024 8:14:59 AM

General Fund (10)

1110 Regular Programs	Elementary	Secondary	Federal	Total
100 <u>Personnel Services – Salaries</u>				
100 Personnel Services – Salaries	6,886,044.98	4,590,696.65	1,775,851.56	13,252,593.19
Total Personnel Services – Salaries	\$6,886,044.98	\$4,590,696.65	\$1,775,851.56	\$13,252,593.19
200 <u>Personnel Services – Employee Benefits</u>				
210 Group Insurance – Contracted Provider	1,220,585.78	813,723.86	427,798.54	2,462,108.18
220 Social Security Contributions	508,278.44	338,852.29	129,138.61	976,269.34
230 PSERS Retirement Contributions	2,640,696.80	1,760,464.53	249,378.39	4,650,539.72
250 Unemployment Compensation	6,574.51	4,383.01		10,957.52
260 Workers' Compensation	62,776.71	41,851.14		104,627.85
299 All Other Employee Benefits	78,952.00	52,634.67	315,000.00	446,586.67
Total Personnel Services – Employee Benefits	\$4,517,864.24	\$3,011,909.50	\$1,121,315.54	\$8,651,089.28
300 <u>Purchased Professional and Technical Services</u>				
322 Professional Educational Services – Ius	6,660.00	4,440.00		11,100.00
323 Professional Educational Services – Other Educational Agencies	18.00	12.00		30.00
329 Professional Educational Services – Other	37,177.62	24,785.08	131,328.44	193,291.14
330 Other Professional Services	333.24	222.16	24,500.00	25,055.40
390 Other Purchased Professional and Technical Services	4,136.27	2,757.52	5,500.00	12,393.79
Total Purchased Professional and Technical Services	\$48,325.13	\$32,216.76	\$161,328.44	\$241,870.33
400 <u>Purchased Property Services</u>				
430 Repairs and Maintenance Services	3,650.92	2,433.95		6,084.87
Total Purchased Property Services	\$3,650.92	\$2,433.95		\$6,084.87
500 <u>Other Purchased Services</u>				
510 Student Transportation Services	1,029.41	686.27		1,715.68
530 Communications			609.21	609.21
562 Tuition To Pennsylvania Charter Schools	1,481,869.58	987,913.06		2,469,782.64
580 Travel	36,623.09	24,415.40	5,334.01	66,372.50
Total Other Purchased Services	\$1,519,522.08	\$1,013,014.73	\$5,943.22	\$2,538,480.03
600 <u>Supplies</u>				
610 General Supplies	119,428.85	79,619.24	96,583.00	295,631.09
640 Books and Periodicals	194,259.53	129,506.35	806,357.17	1,130,123.05
650 Supplies & Fees – Technology Related	355,020.50	236,680.34	4,995.00	596,695.84
Total Supplies	\$668,708.88	\$445,805.93	\$907,935.17	\$2,022,449.98
700 <u>Property</u>				
752 Capital Equipment – Original and Additional	77,618.40	51,745.60		129,364.00
Total Property	\$77,618.40	\$51,745.60		\$129,364.00
Total 1110 Regular Programs	\$13,721,734.63	\$9,147,823.12	\$3,972,373.93	\$26,841,931.68

LEA : 123466403 Pottstown SD

Printed 6/26/2024 8:14:59 AM

General Fund (10)

1200 Special Programs – Elementary / Secondary

	Elementary	Secondary	Federal	Total
100 Personnel Services – Salaries				
100 Personnel Services – Salaries	2,576,575.49	1,717,716.98	683,599.12	4,977,891.59
Total Personnel Services – Salaries	\$2,576,575.49	\$1,717,716.98	\$683,599.12	\$4,977,891.59
200 Personnel Services – Employee Benefits				
210 Group Insurance – Contracted Provider	601,007.32	400,671.55	104,401.49	1,106,080.36
220 Social Security Contributions	188,797.58	125,865.07	50,424.03	365,086.68
230 PSERS Retirement Contributions	898,372.20	598,914.81	240,268.38	1,737,555.39
250 Unemployment Compensation	400.79	267.18		667.97
299 All Other Employee Benefits	17,874.12	11,916.07	55,000.00	84,790.19
Total Personnel Services – Employee Benefits	\$1,706,452.01	\$1,137,634.68	\$450,093.90	\$3,294,180.59
300 Purchased Professional and Technical Services				
322 Professional Educational Services – lus	1,156,249.55	677,636.65	125,548.38	1,959,434.58
329 Professional Educational Services – Other	39,319.13	26,212.76	253,250.36	318,782.25
330 Other Professional Services	159,852.26	106,568.17	7,605.00	274,025.43
390 Other Purchased Professional and Technical Services	29,320.73	19,547.16	28,750.00	77,617.89
Total Purchased Professional and Technical Services	\$1,384,741.67	\$829,964.74	\$415,153.74	\$2,629,860.15
500 Other Purchased Services				
510 Student Transportation Services	18,403.76	12,269.17	19,699.20	50,372.13
530 Communications	5,392.21	3,594.80		8,987.01
562 Tuition To Pennsylvania Charter Schools	1,605,612.27	1,070,408.19		2,676,020.46
563 Tuition To Nonpublic Schools	1,084,290.32	722,860.21		1,807,150.53
567 Tuition To Approved Private Schools (APS) and PA Chartered Schools for the Deaf and Blind	203,431.84	135,621.22		339,053.06
568 Tuition To Private Residential Rehabilitative Institutions (PRRI) [In-State] and Detention Centers	1,584.00	1,056.00		2,640.00
580 Travel	654.44	436.30		1,090.74
594 IU Payment By Withholding for Institutionalized Children's Programs – Special Classes	4,111.48	2,740.98		6,852.46
Total Other Purchased Services	\$2,923,480.32	\$1,948,986.87	\$19,699.20	\$4,892,166.39
600 Supplies				
610 General Supplies	246,142.68	164,095.12	8,079.52	418,317.32
640 Books and Periodicals	32,489.33	21,659.55	93,238.29	147,387.17
650 Supplies & Fees – Technology Related			7,000.00	7,000.00
Total Supplies	\$278,632.01	\$185,754.67	\$108,317.81	\$572,704.49
800 Other Objects				
810 Dues and Fees	846.00	564.00		1,410.00
Total Other Objects	\$846.00	\$564.00		\$1,410.00
Total 1200 Special Programs – Elementary / Secondary	\$8,870,727.50	\$5,820,621.94	\$1,676,863.77	\$16,368,213.21

LEA : 123466403 Pottstown SD

Printed 6/26/2024 8:14:59 AM

General Fund (10)

1210 Life Skills Support

	<u>Elementary</u>	<u>Secondary</u>	<u>Federal</u>	<u>Total</u>
100 <u>Personnel Services – Salaries</u>				
100 Personnel Services – Salaries	185,827.42	123,884.95	151,242.29	460,954.66
Total Personnel Services – Salaries	\$185,827.42	\$123,884.95	\$151,242.29	\$460,954.66
200 <u>Personnel Services – Employee Benefits</u>				
210 Group Insurance – Contracted Provider	40,195.13	26,796.76	38,466.44	105,458.33
220 Social Security Contributions	13,696.34	9,130.90	10,662.77	33,490.01
230 PSERS Retirement Contributions	64,952.39	43,301.60	53,328.03	161,582.02
250 Unemployment Compensation	9.64	6.42		16.06
Total Personnel Services – Employee Benefits	\$118,853.50	\$79,235.68	\$102,457.24	\$300,546.42
300 <u>Purchased Professional and Technical Services</u>				
322 Professional Educational Services – Ius	24,850.21	16,566.81		41,417.02
Total Purchased Professional and Technical Services	\$24,850.21	\$16,566.81		\$41,417.02
500 <u>Other Purchased Services</u>				
510 Student Transportation Services	13,168.45	8,778.96		21,947.41
Total Other Purchased Services	\$13,168.45	\$8,778.96		\$21,947.41
600 <u>Supplies</u>				
610 General Supplies	10,267.26	6,844.84		17,112.10
Total Supplies	\$10,267.26	\$6,844.84		\$17,112.10
Total 1210 Life Skills Support	\$352,966.84	\$235,311.24	\$253,699.53	\$841,977.61

LEA : 123466403 Pottstown SD

Printed 6/26/2024 8:14:59 AM

General Fund (10)

1220 Sensory Support	<u>Elementary</u>	<u>Secondary</u>	<u>Federal</u>	<u>Total</u>
300 <u>Purchased Professional and Technical Services</u>				
322 Professional Educational Services – Ius	134,510.47	89,673.64		224,184.11
329 Professional Educational Services – Other	17,878.36	11,918.90		29,797.26
Total Purchased Professional and Technical Services	\$152,388.83	\$101,592.54		\$253,981.37
600 <u>Supplies</u>				
610 General Supplies	273.27	182.18		455.45
Total Supplies	\$273.27	\$182.18		\$455.45
Total 1220 Sensory Support	\$152,662.10	\$101,774.72		\$254,436.82

LEA : 123466403 Pottstown SD

Printed 6/26/2024 8:14:59 AM

General Fund (10)

1230 Emotional Support

	<u>Elementary</u>	<u>Secondary</u>	<u>Federal</u>	<u>Total</u>
100 <u>Personnel Services – Salaries</u>				
100 Personnel Services – Salaries	793,179.39	528,786.26	123,371.23	1,445,336.88
Total Personnel Services – Salaries	\$793,179.39	\$528,786.26	\$123,371.23	\$1,445,336.88
200 <u>Personnel Services – Employee Benefits</u>				
210 Group Insurance – Contracted Provider	169,902.24	113,268.16	23,121.31	306,291.71
220 Social Security Contributions	58,220.45	38,813.63	9,118.34	106,152.42
230 PSERS Retirement Contributions	276,365.80	184,243.86	43,362.38	503,972.04
299 All Other Employee Benefits	230.08	153.38		383.46
Total Personnel Services – Employee Benefits	\$504,718.57	\$336,479.03	\$75,602.03	\$916,799.63
300 <u>Purchased Professional and Technical Services</u>				
322 Professional Educational Services – Ius	526,702.49	351,134.99	47,807.77	925,645.25
329 Professional Educational Services – Other	18,622.67	12,415.12	54,600.00	85,637.79
330 Other Professional Services	1,977.75	1,318.50		3,296.25
Total Purchased Professional and Technical Services	\$547,302.91	\$364,868.61	\$102,407.77	\$1,014,579.29
500 <u>Other Purchased Services</u>				
510 Student Transportation Services	5,235.31	3,490.21		8,725.52
530 Communications	543.48	362.32		905.80
563 Tuition To Nonpublic Schools	1,008,511.44	672,340.96		1,680,852.40
580 Travel	161.72	107.82		269.54
Total Other Purchased Services	\$1,014,451.95	\$676,301.31		\$1,690,753.26
600 <u>Supplies</u>				
610 General Supplies	198,929.36	132,619.58		331,548.94
Total Supplies	\$198,929.36	\$132,619.58		\$331,548.94
Total 1230 Emotional Support	\$3,058,582.18	\$2,039,054.79	\$301,381.03	\$5,399,018.00

LEA : 123466403 Pottstown SD

Printed 6/26/2024 8:14:59 AM

General Fund (10)

1240 Academic Support

	Elementary	Secondary	Federal	Total
100 <u>Personnel Services – Salaries</u>				
100 Personnel Services – Salaries	1,355,525.10	903,683.39	96,217.80	2,355,426.29
Total Personnel Services – Salaries	\$1,355,525.10	\$903,683.39	\$96,217.80	\$2,355,426.29
200 <u>Personnel Services – Employee Benefits</u>				
210 Group Insurance – Contracted Provider	345,742.33	230,494.88	19,154.10	595,391.31
220 Social Security Contributions	99,469.01	66,312.68	7,066.48	172,848.17
230 PSERS Retirement Contributions	473,147.24	315,431.50	33,926.37	822,505.11
250 Unemployment Compensation	391.15	260.76		651.91
299 All Other Employee Benefits	15,492.05	10,328.03		25,820.08
Total Personnel Services – Employee Benefits	\$934,241.78	\$622,827.85	\$60,146.95	\$1,617,216.58
300 <u>Purchased Professional and Technical Services</u>				
329 Professional Educational Services – Other	2,818.10	1,878.74		4,696.84
Total Purchased Professional and Technical Services	\$2,818.10	\$1,878.74		\$4,696.84
500 <u>Other Purchased Services</u>				
563 Tuition To Nonpublic Schools	30,891.00	20,594.00		51,485.00
Total Other Purchased Services	\$30,891.00	\$20,594.00		\$51,485.00
600 <u>Supplies</u>				
610 General Supplies	11,721.34	7,814.22		19,535.56
640 Books and Periodicals	18,002.53	12,001.69		30,004.22
Total Supplies	\$29,723.87	\$19,815.91		\$49,539.78
Total 1240 Academic Support	\$2,353,199.85	\$1,568,799.89	\$156,364.75	\$4,078,364.49

LEA : 123466403 Pottstown SD

Printed 6/26/2024 8:14:59 AM

General Fund (10)

1241 Learning Support – Public	Elementary	Secondary	Federal	Total
100 <u>Personnel Services – Salaries</u>				
100 Personnel Services – Salaries	1,299,767.83	866,511.88	96,217.80	2,262,497.51
Total Personnel Services – Salaries	\$1,299,767.83	\$866,511.88	\$96,217.80	\$2,262,497.51
200 <u>Personnel Services – Employee Benefits</u>				
210 Group Insurance – Contracted Provider	334,138.82	222,759.21	19,154.10	576,052.13
220 Social Security Contributions	95,380.63	63,587.09	7,066.48	166,034.20
230 PSERS Retirement Contributions	453,536.27	302,357.52	33,926.37	789,820.16
250 Unemployment Compensation	391.15	260.76		651.91
299 All Other Employee Benefits	15,492.05	10,328.03		25,820.08
Total Personnel Services – Employee Benefits	\$898,938.92	\$599,292.61	\$60,146.95	\$1,558,378.48
300 <u>Purchased Professional and Technical Services</u>				
329 Professional Educational Services – Other	2,818.10	1,878.74		4,696.84
Total Purchased Professional and Technical Services	\$2,818.10	\$1,878.74		\$4,696.84
500 <u>Other Purchased Services</u>				
563 Tuition To Nonpublic Schools	30,891.00	20,594.00		51,485.00
Total Other Purchased Services	\$30,891.00	\$20,594.00		\$51,485.00
600 <u>Supplies</u>				
610 General Supplies	11,465.64	7,643.76		19,109.40
640 Books and Periodicals	18,002.53	12,001.69		30,004.22
Total Supplies	\$29,468.17	\$19,645.45		\$49,113.62
Total 1241 Learning Support – Public	\$2,261,884.02	\$1,507,922.68	\$156,364.75	\$3,926,171.45

LEA : 123466403 Pottstown SD

Printed 6/26/2024 8:14:59 AM

General Fund (10)

1243 Gifted Support	<u>Elementary</u>	<u>Secondary</u>	<u>Federal</u>	<u>Total</u>
100 <u>Personnel Services – Salaries</u>				
100 Personnel Services – Salaries	55,757.27	37,171.51		92,928.78
Total Personnel Services – Salaries	\$55,757.27	\$37,171.51		\$92,928.78
200 <u>Personnel Services – Employee Benefits</u>				
210 Group Insurance – Contracted Provider	11,603.51	7,735.67		19,339.18
220 Social Security Contributions	4,088.38	2,725.59		6,813.97
230 PSERS Retirement Contributions	19,610.97	13,073.98		32,684.95
Total Personnel Services – Employee Benefits	\$35,302.86	\$23,535.24		\$58,838.10
600 <u>Supplies</u>				
610 General Supplies	255.70	170.46		426.16
Total Supplies	\$255.70	\$170.46		\$426.16
Total 1243 Gifted Support	\$91,315.83	\$60,877.21		\$152,193.04

LEA : 123466403 Pottstown SD

Printed 6/26/2024 8:14:59 AM

General Fund (10)

1270 Multi-Handicapped Support	<u>Elementary</u>	<u>Secondary</u>	<u>Federal</u>	<u>Total</u>
300 <u>Purchased Professional and Technical Services</u>				
322 Professional Educational Services – lus	323,553.39	215,702.26	77,740.61	616,996.26
Total Purchased Professional and Technical Services	\$323,553.39	\$215,702.26	\$77,740.61	\$616,996.26
500 <u>Other Purchased Services</u>				
563 Tuition To Nonpublic Schools	44,857.88	29,905.25		74,763.13
Total Other Purchased Services	\$44,857.88	\$29,905.25		\$74,763.13
600 <u>Supplies</u>				
610 General Supplies	666.09	444.06		1,110.15
Total Supplies	\$666.09	\$444.06		\$1,110.15
Total 1270 Multi-Handicapped Support	\$369,077.36	\$246,051.57	\$77,740.61	\$692,869.54

LEA : 123466403 Pottstown SD

Printed 6/26/2024 8:14:59 AM

General Fund (10)				
1280 Early Intervention Support	<u>Elementary</u>	<u>Secondary</u>	<u>Federal</u>	<u>Total</u>
300 <u>Purchased Professional and Technical Services</u>				
322 Professional Educational Services – lus	139,794.56			139,794.56
Total Purchased Professional and Technical Services	\$139,794.56			\$139,794.56
Total 1280 Early Intervention Support	\$139,794.56			\$139,794.56

LEA : 123466403 Pottstown SD

Printed 6/26/2024 8:14:59 AM

General Fund (10)

1290 Special Programs - Other Support	Elementary	Secondary	Federal	Total
100 <u>Personnel Services – Salaries</u>				
100 Personnel Services – Salaries	242,043.58	161,362.38	312,767.80	716,173.76
Total Personnel Services – Salaries	\$242,043.58	\$161,362.38	\$312,767.80	\$716,173.76
200 <u>Personnel Services – Employee Benefits</u>				
210 Group Insurance – Contracted Provider	45,167.62	30,111.75	23,659.64	98,939.01
220 Social Security Contributions	17,411.78	11,607.86	23,576.44	52,596.08
230 PSERS Retirement Contributions	83,906.77	55,937.85	109,651.60	249,496.22
299 All Other Employee Benefits	2,151.99	1,434.66	55,000.00	58,586.65
Total Personnel Services – Employee Benefits	\$148,638.16	\$99,092.12	\$211,887.68	\$459,617.96
300 <u>Purchased Professional and Technical Services</u>				
322 Professional Educational Services – Ius	6,838.43	4,558.95		11,397.38
329 Professional Educational Services – Other			198,650.36	198,650.36
330 Other Professional Services	157,874.51	105,249.67	7,605.00	270,729.18
390 Other Purchased Professional and Technical Services	29,320.73	19,547.16	28,750.00	77,617.89
Total Purchased Professional and Technical Services	\$194,033.67	\$129,355.78	\$235,005.36	\$558,394.81
500 <u>Other Purchased Services</u>				
510 Student Transportation Services			19,699.20	19,699.20
530 Communications	4,848.73	3,232.48		8,081.21
562 Tuition To Pennsylvania Charter Schools	1,605,612.27	1,070,408.19		2,676,020.46
563 Tuition To Nonpublic Schools	30.00	20.00		50.00
567 Tuition To Approved Private Schools (APS) and PA Chartered Schools for the Deaf and Blind	203,431.84	135,621.22		339,053.06
568 Tuition To Private Residential Rehabilitative Institutions (PRRI) [In-State] and Detention Centers	1,584.00	1,056.00		2,640.00
580 Travel	492.72	328.48		821.20
594 IU Payment By Withholding for Institutionalized Children's Programs – Special Classes	4,111.48	2,740.98		6,852.46
Total Other Purchased Services	\$1,820,111.04	\$1,213,407.35	\$19,699.20	\$3,053,217.59
600 <u>Supplies</u>				
610 General Supplies	24,285.36	16,190.24	8,079.52	48,555.12
640 Books and Periodicals	14,486.80	9,657.86	93,238.29	117,382.95
650 Supplies & Fees – Technology Related			7,000.00	7,000.00
Total Supplies	\$38,772.16	\$25,848.10	\$108,317.81	\$172,938.07
800 <u>Other Objects</u>				
810 Dues and Fees	846.00	564.00		1,410.00
Total Other Objects	\$846.00	\$564.00		\$1,410.00
Total 1290 Special Programs - Other Support	\$2,444,444.61	\$1,629,629.73	\$887,677.85	\$4,961,752.19

LEA : 123466403 Pottstown SD

Printed 6/26/2024 8:14:59 AM

General Fund (10)

1300 Vocational Education

	<u>Elementary</u>	<u>Secondary</u>	<u>Federal</u>	<u>Total</u>
100 <u>Personnel Services – Salaries</u>				
100 Personnel Services – Salaries		725,348.11	8,005.86	733,353.97
Total Personnel Services – Salaries		\$725,348.11	\$8,005.86	\$733,353.97
200 <u>Personnel Services – Employee Benefits</u>				
210 Group Insurance – Contracted Provider		179,237.69		179,237.69
220 Social Security Contributions		52,155.66	612.46	52,768.12
230 PSERS Retirement Contributions		257,030.45	846.85	257,877.30
299 All Other Employee Benefits		700.00	15,000.00	15,700.00
Total Personnel Services – Employee Benefits		\$489,123.80	\$16,459.31	\$505,583.11
300 <u>Purchased Professional and Technical Services</u>				
330 Other Professional Services		371.08		371.08
390 Other Purchased Professional and Technical Services			1,194.61	1,194.61
Total Purchased Professional and Technical Services		\$371.08	\$1,194.61	\$1,565.69
400 <u>Purchased Property Services</u>				
430 Repairs and Maintenance Services		969.10		969.10
440 Rentals		1,032.44		1,032.44
Total Purchased Property Services		\$2,001.54		\$2,001.54
500 <u>Other Purchased Services</u>				
580 Travel		3,584.42	1,431.52	5,015.94
Total Other Purchased Services		\$3,584.42	\$1,431.52	\$5,015.94
600 <u>Supplies</u>				
610 General Supplies		63,481.25	69,881.78	133,363.03
Total Supplies		\$63,481.25	\$69,881.78	\$133,363.03
Total 1300 Vocational Education		\$1,283,910.20	\$96,973.08	\$1,380,883.28

LEA : 123466403 Pottstown SD

Printed 6/26/2024 8:14:59 AM

General Fund (10)

1400 Other Instructional Programs – Elementary / Secondary	Elementary	Secondary	Federal	Total
100 <u>Personnel Services – Salaries</u>				
100 Personnel Services – Salaries	59,390.15	39,593.43	543,910.40	642,893.98
Total Personnel Services – Salaries	\$59,390.15	\$39,593.43	\$543,910.40	\$642,893.98
200 <u>Personnel Services – Employee Benefits</u>				
210 Group Insurance – Contracted Provider	8,956.69	5,971.12		14,927.81
220 Social Security Contributions	3,967.74	2,645.16	41,805.29	48,418.19
230 PSERS Retirement Contributions	100,683.28	67,122.18	58,263.32	226,068.78
299 All Other Employee Benefits	60.00	40.00		100.00
Total Personnel Services – Employee Benefits	\$113,667.71	\$75,778.46	\$100,068.61	\$289,514.78
300 <u>Purchased Professional and Technical Services</u>				
322 Professional Educational Services – Ius	86,248.35	57,498.91		143,747.26
323 Professional Educational Services – Other Educational Agencies	58,189.90	38,793.27		96,983.17
330 Other Professional Services	15,750.00	10,500.00	41,121.00	67,371.00
390 Other Purchased Professional and Technical Services	820.06	546.71	43,934.00	45,300.77
Total Purchased Professional and Technical Services	\$161,008.31	\$107,338.89	\$85,055.00	\$353,402.20
500 <u>Other Purchased Services</u>				
510 Student Transportation Services			1,809.35	1,809.35
530 Communications	1,349.92	899.95	1,407.84	3,657.71
561 Tuition To Other School Districts Within the State	90,048.30	60,032.20		150,080.50
568 Tuition To Private Residential Rehabilitative Institutions (PRRI) [In-State] and Detention Centers	29,550.16	19,700.11		49,250.27
580 Travel	923.58	615.72	2,935.78	4,475.08
Total Other Purchased Services	\$121,871.96	\$81,247.98	\$6,152.97	\$209,272.91
600 <u>Supplies</u>				
610 General Supplies			24,845.41	24,845.41
630 Food			3,367.31	3,367.31
640 Books and Periodicals			147.00	147.00
Total Supplies			\$28,359.72	\$28,359.72
800 <u>Other Objects</u>				
810 Dues and Fees	1,782.00	1,188.00		2,970.00
Total Other Objects	\$1,782.00	\$1,188.00		\$2,970.00
Total 1400 Other Instructional Programs – Elementary / Secondary	\$457,720.13	\$305,146.76	\$763,546.70	\$1,526,413.59

LEA : 123466403 Pottstown SD

Printed 6/26/2024 8:14:59 AM

General Fund (10)

1420 Summer School	<u>Elementary</u>	<u>Secondary</u>	<u>Federal</u>	<u>Total</u>
100 <u>Personnel Services – Salaries</u>				
100 Personnel Services – Salaries	17.24	11.49	285,743.55	285,772.28
Total Personnel Services – Salaries	\$17.24	\$11.49	\$285,743.55	\$285,772.28
200 <u>Personnel Services – Employee Benefits</u>				
220 Social Security Contributions	1.32	0.88	21,859.26	21,861.46
230 PSERS Retirement Contributions	42,657.86	28,438.58	29,863.52	100,959.96
Total Personnel Services – Employee Benefits	\$42,659.18	\$28,439.46	\$51,722.78	\$122,821.42
500 <u>Other Purchased Services</u>				
510 Student Transportation Services			1,809.35	1,809.35
530 Communications	83.09	55.39		138.48
Total Other Purchased Services	\$83.09	\$55.39	\$1,809.35	\$1,947.83
600 <u>Supplies</u>				
610 General Supplies			7,204.13	7,204.13
630 Food			3,367.31	3,367.31
640 Books and Periodicals			147.00	147.00
Total Supplies			\$10,718.44	\$10,718.44
Total 1420 Summer School	\$42,759.51	\$28,506.34	\$349,994.12	\$421,259.97

LEA : 123466403 Pottstown SD

Printed 6/26/2024 8:14:59 AM

General Fund (10)

1430 Homebound Instruction	<u>Elementary</u>	<u>Secondary</u>	<u>Federal</u>	<u>Total</u>
100 <u>Personnel Services – Salaries</u>				
100 Personnel Services – Salaries	648.00	432.00		1,080.00
Total Personnel Services – Salaries	\$648.00	\$432.00		\$1,080.00
200 <u>Personnel Services – Employee Benefits</u>				
220 Social Security Contributions	47.72	31.82		79.54
230 PSERS Retirement Contributions	227.89	151.92		379.81
Total Personnel Services – Employee Benefits	\$275.61	\$183.74		\$459.35
300 <u>Purchased Professional and Technical Services</u>				
322 Professional Educational Services – Ius	1,487.47	991.65		2,479.12
323 Professional Educational Services – Other Educational Agencies	58,189.90	38,793.27		96,983.17
Total Purchased Professional and Technical Services	\$59,677.37	\$39,784.92		\$99,462.29
Total 1430 Homebound Instruction	\$60,600.98	\$40,400.66		\$101,001.64

LEA : 123466403 Pottstown SD

Printed 6/26/2024 8:14:59 AM

General Fund (10)

1440 Alternative Regular Education Programs	<u>Elementary</u>	<u>Secondary</u>	<u>Federal</u>	<u>Total</u>
100 <u>Personnel Services – Salaries</u>				
100 Personnel Services – Salaries	41,282.43	27,521.62		68,804.05
Total Personnel Services – Salaries	\$41,282.43	\$27,521.62		\$68,804.05
200 <u>Personnel Services – Employee Benefits</u>				
210 Group Insurance – Contracted Provider	8,956.69	5,971.12		14,927.81
220 Social Security Contributions	3,068.24	2,045.49		5,113.73
230 PSERS Retirement Contributions	14,578.56	9,719.04		24,297.60
299 All Other Employee Benefits	60.00	40.00		100.00
Total Personnel Services – Employee Benefits	\$26,663.49	\$17,775.65		\$44,439.14
300 <u>Purchased Professional and Technical Services</u>				
322 Professional Educational Services – Ius	84,760.88	56,507.26		141,268.14
Total Purchased Professional and Technical Services	\$84,760.88	\$56,507.26		\$141,268.14
500 <u>Other Purchased Services</u>				
530 Communications	1,201.09	800.73		2,001.82
561 Tuition To Other School Districts Within the State	90,048.30	60,032.20		150,080.50
568 Tuition To Private Residential Rehabilitative Institutions (PRRI) [In-State] and Detention Centers	29,550.16	19,700.11		49,250.27
580 Travel	786.49	524.32		1,310.81
Total Other Purchased Services	\$121,586.04	\$81,057.36		\$202,643.40
800 <u>Other Objects</u>				
810 Dues and Fees	102.00	68.00		170.00
Total Other Objects	\$102.00	\$68.00		\$170.00
Total 1440 Alternative Regular Education Programs	\$274,394.84	\$182,929.89		\$457,324.73

LEA : 123466403 Pottstown SD

Printed 6/26/2024 8:14:59 AM

General Fund (10)

1441 Adjudicated / Court-Placed Programs	<u>Elementary</u>	<u>Secondary</u>	<u>Federal</u>	<u>Total</u>
300 <u>Purchased Professional and Technical Services</u>				
322 Professional Educational Services – Ius	84,760.88	56,507.26		141,268.14
Total Purchased Professional and Technical Services	\$84,760.88	\$56,507.26		\$141,268.14
500 <u>Other Purchased Services</u>				
561 Tuition To Other School Districts Within the State	90,048.30	60,032.20		150,080.50
568 Tuition To Private Residential Rehabilitative Institutions (PRRI) [In-State] and Detention Centers	460.48	306.99		767.47
Total Other Purchased Services	\$90,508.78	\$60,339.19		\$150,847.97
Total 1441 Adjudicated / Court-Placed Programs	\$175,269.66	\$116,846.45		\$292,116.11

LEA : 123466403 Pottstown SD

Printed 6/26/2024 8:14:59 AM

General Fund (10)

1442 Alternative Education Programs	Elementary	Secondary	Federal	Total
100 <u>Personnel Services – Salaries</u>				
100 Personnel Services – Salaries	41,282.43	27,521.62		68,804.05
Total Personnel Services – Salaries	\$41,282.43	\$27,521.62		\$68,804.05
200 <u>Personnel Services – Employee Benefits</u>				
210 Group Insurance – Contracted Provider	8,956.69	5,971.12		14,927.81
220 Social Security Contributions	3,068.24	2,045.49		5,113.73
230 PSERS Retirement Contributions	14,578.56	9,719.04		24,297.60
299 All Other Employee Benefits	60.00	40.00		100.00
Total Personnel Services – Employee Benefits	\$26,663.49	\$17,775.65		\$44,439.14
500 <u>Other Purchased Services</u>				
530 Communications	1,201.09	800.73		2,001.82
568 Tuition To Private Residential Rehabilitative Institutions (PRRI) [In-State] and Detention Centers	29,089.68	19,393.12		48,482.80
580 Travel	786.49	524.32		1,310.81
Total Other Purchased Services	\$31,077.26	\$20,718.17		\$51,795.43
800 <u>Other Objects</u>				
810 Dues and Fees	102.00	68.00		170.00
Total Other Objects	\$102.00	\$68.00		\$170.00
Total 1442 Alternative Education Programs	\$99,125.18	\$66,083.44		\$165,208.62

LEA : 123466403 Pottstown SD

Printed 6/26/2024 8:14:59 AM

General Fund (10)

1450 Instructional Programs Outside the Established School Day	<u>Elementary</u>	<u>Secondary</u>	<u>Federal</u>	<u>Total</u>
100 <u>Personnel Services – Salaries</u>				
100 Personnel Services – Salaries	17,442.48	11,628.32	258,166.85	287,237.65
Total Personnel Services – Salaries	\$17,442.48	\$11,628.32	\$258,166.85	\$287,237.65
200 <u>Personnel Services – Employee Benefits</u>				
220 Social Security Contributions	850.46	566.97	19,946.03	21,363.46
230 PSERS Retirement Contributions	43,218.97	28,812.64	28,399.80	100,431.41
Total Personnel Services – Employee Benefits	\$44,069.43	\$29,379.61	\$48,345.83	\$121,794.87
300 <u>Purchased Professional and Technical Services</u>				
330 Other Professional Services	15,750.00	10,500.00	41,121.00	67,371.00
390 Other Purchased Professional and Technical Services	820.06	546.71	43,934.00	45,300.77
Total Purchased Professional and Technical Services	\$16,570.06	\$11,046.71	\$85,055.00	\$112,671.77
500 <u>Other Purchased Services</u>				
530 Communications	65.74	43.83	1,407.84	1,517.41
580 Travel	137.09	91.40	2,935.78	3,164.27
Total Other Purchased Services	\$202.83	\$135.23	\$4,343.62	\$4,681.68
600 <u>Supplies</u>				
610 General Supplies			17,641.28	17,641.28
Total Supplies			\$17,641.28	\$17,641.28
Total 1450 Instructional Programs Outside the Established School Day	\$78,284.80	\$52,189.87	\$413,552.58	\$544,027.25

LEA : 123466403 Pottstown SD

Printed 6/26/2024 8:14:59 AM

General Fund (10)

1490 Additional Other Instructional Programs	<u>Elementary</u>	<u>Secondary</u>	<u>Federal</u>	<u>Total</u>
800 <u>Other Objects</u>				
810 Dues and Fees	1,680.00	1,120.00		2,800.00
Total Other Objects	\$1,680.00	\$1,120.00		\$2,800.00
Total 1490 Additional Other Instructional Programs	\$1,680.00	\$1,120.00		\$2,800.00

LEA : 123466403 Pottstown SD

Printed 6/26/2024 8:14:59 AM

General Fund (10)

1500 Nonpublic School Programs

Elementary Secondary Federal Total

300 Purchased Professional and Technical Services

323 Professional Educational Services – Other Educational Agencies 10,455.51 10,455.51

Total Purchased Professional and Technical Services \$10,455.51 \$10,455.51

Total 1500 Nonpublic School Programs \$10,455.51 \$10,455.51

LEA : 123466403 Pottstown SD

Printed 6/26/2024 8:14:59 AM

General Fund (10)				
1800 Pre-Kindergarten	<u>Elementary</u>	<u>Secondary</u>	<u>Federal</u>	<u>Total</u>
100 <u>Personnel Services – Salaries</u>				
100 Personnel Services – Salaries				913,429.08
Total Personnel Services – Salaries				\$913,429.08
200 <u>Personnel Services – Employee Benefits</u>				
210 Group Insurance – Contracted Provider				239,691.53
220 Social Security Contributions				66,815.56
230 PSERS Retirement Contributions				318,566.49
Total Personnel Services – Employee Benefits				\$625,073.58
300 <u>Purchased Professional and Technical Services</u>				
329 Professional Educational Services – Other				24,701.00
390 Other Purchased Professional and Technical Services				137,970.59
Total Purchased Professional and Technical Services				\$162,671.59
400 <u>Purchased Property Services</u>				
410 Cleaning Services				8,286.53
440 Rentals				118,601.87
Total Purchased Property Services				\$126,888.40
500 <u>Other Purchased Services</u>				
530 Communications				1,950.48
549 Other Advertising/Public Relations				3,094.00
580 Travel				1,103.73
Total Other Purchased Services				\$6,148.21
600 <u>Supplies</u>				
610 General Supplies			9,019.40	39,124.73
640 Books and Periodicals				4,075.71
Total Supplies			\$9,019.40	\$43,200.44
700 <u>Property</u>				
752 Capital Equipment – Original and Additional				11,396.35
Total Property				\$11,396.35
800 <u>Other Objects</u>				
890 Miscellaneous Expenditures				1,236,714.32
Total Other Objects				\$1,236,714.32
Total 1800 Pre-Kindergarten			\$9,019.40	\$3,125,521.97

LEA : 123466403 Pottstown SD

Printed 6/26/2024 8:14:59 AM

General Fund (10)				
1801 Pre-K Instruction	<u>Elementary</u>	<u>Secondary</u>	<u>Federal</u>	<u>Total</u>
100 <u>Personnel Services – Salaries</u>				
100 Personnel Services – Salaries				445,829.35
Total Personnel Services – Salaries				\$445,829.35
200 <u>Personnel Services – Employee Benefits</u>				
210 Group Insurance – Contracted Provider				115,755.47
220 Social Security Contributions				32,946.27
230 PSERS Retirement Contributions				156,398.16
Total Personnel Services – Employee Benefits				\$305,099.90
300 <u>Purchased Professional and Technical Services</u>				
329 Professional Educational Services – Other				24,701.00
390 Other Purchased Professional and Technical Services				9,628.00
Total Purchased Professional and Technical Services				\$34,329.00
500 <u>Other Purchased Services</u>				
530 Communications				1,947.51
580 Travel				536.24
Total Other Purchased Services				\$2,483.75
600 <u>Supplies</u>				
610 General Supplies				28.03
640 Books and Periodicals				4,075.71
Total Supplies				\$4,103.74
700 <u>Property</u>				
752 Capital Equipment – Original and Additional				5,596.74
Total Property				\$5,596.74
Total 1801 Pre-K Instruction				\$797,442.48

LEA : 123466403 Pottstown SD

Printed 6/26/2024 8:14:59 AM

General Fund (10)				
1802 Pre-K Administrative Support	<u>Elementary</u>	<u>Secondary</u>	<u>Federal</u>	<u>Total</u>
100 <u>Personnel Services – Salaries</u>				
100 Personnel Services – Salaries				467,599.73
Total Personnel Services – Salaries				\$467,599.73
200 <u>Personnel Services – Employee Benefits</u>				
210 Group Insurance – Contracted Provider				123,936.06
220 Social Security Contributions				33,869.29
230 PSERS Retirement Contributions				162,168.33
Total Personnel Services – Employee Benefits				\$319,973.68
300 <u>Purchased Professional and Technical Services</u>				
390 Other Purchased Professional and Technical Services				23,808.85
Total Purchased Professional and Technical Services				\$23,808.85
400 <u>Purchased Property Services</u>				
410 Cleaning Services				8,286.53
440 Rentals				118,601.87
Total Purchased Property Services				\$126,888.40
500 <u>Other Purchased Services</u>				
530 Communications				2.97
549 Other Advertising/Public Relations				3,094.00
580 Travel				567.49
Total Other Purchased Services				\$3,664.46
600 <u>Supplies</u>				
610 General Supplies			9,019.40	36,906.23
Total Supplies			\$9,019.40	\$36,906.23
700 <u>Property</u>				
752 Capital Equipment – Original and Additional				5,799.61
Total Property				\$5,799.61
Total 1802 Pre-K Administrative Support			\$9,019.40	\$984,640.96

LEA : 123466403 Pottstown SD

Printed 6/26/2024 8:14:59 AM

General Fund (10)

1806 Pre-K Professional Development	<u>Elementary</u>	<u>Secondary</u>	<u>Federal</u>	<u>Total</u>
300 <u>Purchased Professional and Technical Services</u>				
390 Other Purchased Professional and Technical Services				104,533.74
Total Purchased Professional and Technical Services				\$104,533.74
600 <u>Supplies</u>				
610 General Supplies				2,190.47
Total Supplies				\$2,190.47
Total 1806 Pre-K Professional Development				\$106,724.21

LEA : 123466403 Pottstown SD

Printed 6/26/2024 8:14:59 AM

General Fund (10)

1807 Pre-K Pass-Through Funds (Partners)	<u>Elementary</u>	<u>Secondary</u>	<u>Federal</u>	<u>Total</u>
800 <u>Other Objects</u>				
890 Miscellaneous Expenditures				1,236,714.32
Total Other Objects				\$1,236,714.32
Total 1807 Pre-K Pass-Through Funds (Partners)				\$1,236,714.32

LEA : 123466403 Pottstown SD

Printed 6/26/2024 8:15:13 AM

General Fund (10)

2000 Support Services		Total
100 <u>Personnel Services – Salaries</u>		
100 Personnel Services – Salaries		8,595,174.66
Total Personnel Services – Salaries		\$8,595,174.66
200 <u>Personnel Services – Employee Benefits</u>		
210 Group Insurance – Contracted Provider		1,478,963.07
220 Social Security Contributions		635,165.97
230 PSERS Retirement Contributions		2,999,220.32
240 Tuition Reimbursement		57,968.19
250 Unemployment Compensation		38,064.44
280 Other Post-Employment Benefits (OPEB)		8,584.50
299 All Other Employee Benefits		84,783.18
Total Personnel Services – Employee Benefits		\$5,302,749.67
300 <u>Purchased Professional and Technical Services</u>		
322 Professional Educational Services – Ius		331,219.67
323 Professional Educational Services – Other Educational Agencies		598.00
329 Professional Educational Services – Other		712,589.10
330 Other Professional Services		1,358,477.36
350 Security / Safety Services		552,680.60
360 Employee Training and Development Services		12,028.60
390 Other Purchased Professional and Technical Services		235,589.44
Total Purchased Professional and Technical Services		\$3,203,182.77
400 <u>Purchased Property Services</u>		
410 Cleaning Services		242,397.32
420 Utility Services		92,511.20
430 Repairs and Maintenance Services		564,300.49
440 Rentals		42,038.83
460 Extermination Services		10,437.22
Total Purchased Property Services		\$951,685.06
500 <u>Other Purchased Services</u>		
513 Contracted Carriers		2,386,251.96
516 Student Transportation Services From the IU		156,124.01
520 Insurance – General		282,520.50
522 Automotive Liability Insurance		11,528.00
523 General Property and Liability Insurance		19,197.00
529 Other Insurance		22,362.00
530 Communications		104,804.36
549 Other Advertising/Public Relations		5,930.09
580 Travel		14,974.96
595 IU Payments By Withholding		15,945.11
Total Other Purchased Services		\$3,019,637.99
600 <u>Supplies</u>		
610 General Supplies		1,074,662.71
620 Energy		617,066.54
640 Books and Periodicals		170,995.86

LEA : 123466403 Pottstown SD

Printed 6/26/2024 8:15:13 AM

General Fund (10)

2000 Support Services

Total

600 <u>Supplies</u>	
650 Supplies & Fees – Technology Related	805,163.81
Total Supplies	\$2,667,888.92
700 <u>Property</u>	
752 Capital Equipment – Original and Additional	12,969.49
762 Capitalized Equipment - Replacement	29,603.00
766 Capitalized Technology Equipment – Replacement	82,946.75
790 Other Property	128,641.83
Total Property	\$254,161.07
800 <u>Other Objects</u>	
810 Dues and Fees	36,224.27
820 Claims and Judgments Against the LEA	35,000.00
Total Other Objects	\$71,224.27
Total 2000 Support Services	\$24,065,704.41

LEA : 123466403 Pottstown SD

Printed 6/26/2024 8:15:13 AM

General Fund (10)

2100 Support Services – Students	Elementary	Secondary	Federal	Total
100 Personnel Services – Salaries				
100 Personnel Services – Salaries	1,131,496.53	754,331.03	156,177.37	2,329,572.62
Total Personnel Services – Salaries	\$1,131,496.53	\$754,331.03	\$156,177.37	\$2,329,572.62
200 Personnel Services – Employee Benefits				
210 Group Insurance – Contracted Provider	167,542.55	111,695.02	30,195.41	368,006.90
220 Social Security Contributions	83,865.72	55,910.48	11,789.07	173,596.25
230 PSERS Retirement Contributions	414,639.30	276,426.20	16,944.03	817,772.33
250 Unemployment Compensation	1,440.00	960.00	30,000.00	36,655.25
Total Personnel Services – Employee Benefits	\$667,487.57	\$444,991.70	\$88,928.51	\$1,396,030.73
300 Purchased Professional and Technical Services				
322 Professional Educational Services – Ius	95,483.80	63,655.87		205,339.67
323 Professional Educational Services – Other Educational Agencies	358.80	239.20		598.00
329 Professional Educational Services – Other			396,509.05	396,509.05
330 Other Professional Services	53,204.07	35,469.38		138,473.45
390 Other Purchased Professional and Technical Services	6,255.00	4,170.00		11,395.00
Total Purchased Professional and Technical Services	\$155,301.67	\$103,534.45	\$396,509.05	\$752,315.17
400 Purchased Property Services				
440 Rentals	545.22	363.48		908.70
Total Purchased Property Services	\$545.22	\$363.48		\$908.70
500 Other Purchased Services				
530 Communications	312.45	208.30		520.75
549 Other Advertising/Public Relations	823.61	549.07		1,372.68
580 Travel	302.66	201.77	1,867.20	4,098.10
Total Other Purchased Services	\$1,438.72	\$959.14	\$1,867.20	\$5,991.53
600 Supplies				
610 General Supplies	16,082.32	10,721.54	4,562.28	31,366.14
640 Books and Periodicals	1,195.45	796.97	31,365.30	33,357.72
650 Supplies & Fees – Technology Related				9,785.00
Total Supplies	\$17,277.77	\$11,518.51	\$35,927.58	\$74,508.86
800 Other Objects				
810 Dues and Fees	178.80	119.20	506.00	804.00
Total Other Objects	\$178.80	\$119.20	\$506.00	\$804.00
Total 2100 Support Services – Students	\$1,973,726.28	\$1,315,817.51	\$679,915.71	\$4,560,131.61

LEA : 123466403 Pottstown SD

Printed 6/26/2024 8:15:13 AM

General Fund (10)

2110 Supervision of Student Services	Elementary	Secondary	Federal	Total
100 <u>Personnel Services – Salaries</u>				
100 Personnel Services – Salaries	84,371.40	56,247.60	57,352.10	197,971.10
Total Personnel Services – Salaries	\$84,371.40	\$56,247.60	\$57,352.10	\$197,971.10
200 <u>Personnel Services – Employee Benefits</u>				
210 Group Insurance – Contracted Provider	13,491.17	8,994.12	15,320.79	37,806.08
220 Social Security Contributions	6,057.58	4,038.39	4,467.61	14,563.58
230 PSERS Retirement Contributions	38,142.58	25,428.39	6,360.71	69,931.68
250 Unemployment Compensation	1,440.00	960.00	30,000.00	32,400.00
Total Personnel Services – Employee Benefits	\$59,131.33	\$39,420.90	\$56,149.11	\$154,701.34
300 <u>Purchased Professional and Technical Services</u>				
329 Professional Educational Services – Other			112,101.88	112,101.88
Total Purchased Professional and Technical Services			\$112,101.88	\$112,101.88
400 <u>Purchased Property Services</u>				
440 Rentals	545.22	363.48		908.70
Total Purchased Property Services	\$545.22	\$363.48		\$908.70
500 <u>Other Purchased Services</u>				
530 Communications	312.45	208.30		520.75
Total Other Purchased Services	\$312.45	\$208.30		\$520.75
600 <u>Supplies</u>				
610 General Supplies	7,059.57	4,706.38		11,765.95
Total Supplies	\$7,059.57	\$4,706.38		\$11,765.95
Total 2110 Supervision of Student Services	\$151,419.97	\$100,946.66	\$225,603.09	\$477,969.72

LEA : 123466403 Pottstown SD

Printed 6/26/2024 8:15:13 AM

General Fund (10)

2111 Supervision of Student Services – Head of Component	<u>Elementary</u>	<u>Secondary</u>	<u>Federal</u>	<u>Total</u>
100 <u>Personnel Services – Salaries</u>				
100 Personnel Services – Salaries	84,371.40	56,247.60	57,352.10	197,971.10
Total Personnel Services – Salaries	\$84,371.40	\$56,247.60	\$57,352.10	\$197,971.10
200 <u>Personnel Services – Employee Benefits</u>				
210 Group Insurance – Contracted Provider	13,491.17	8,994.12	15,320.79	37,806.08
220 Social Security Contributions	6,057.58	4,038.39	4,467.61	14,563.58
230 PSERS Retirement Contributions	38,142.58	25,428.39	6,360.71	69,931.68
250 Unemployment Compensation	1,440.00	960.00	30,000.00	32,400.00
Total Personnel Services – Employee Benefits	\$59,131.33	\$39,420.90	\$56,149.11	\$154,701.34
300 <u>Purchased Professional and Technical Services</u>				
329 Professional Educational Services – Other			112,101.88	112,101.88
Total Purchased Professional and Technical Services			\$112,101.88	\$112,101.88
400 <u>Purchased Property Services</u>				
440 Rentals	545.22	363.48		908.70
Total Purchased Property Services	\$545.22	\$363.48		\$908.70
500 <u>Other Purchased Services</u>				
530 Communications	312.45	208.30		520.75
Total Other Purchased Services	\$312.45	\$208.30		\$520.75
600 <u>Supplies</u>				
610 General Supplies	7,059.57	4,706.38		11,765.95
Total Supplies	\$7,059.57	\$4,706.38		\$11,765.95
Total 2111 Supervision of Student Services – Head of Component	\$151,419.97	\$100,946.66	\$225,603.09	\$477,969.72

LEA : 123466403 Pottstown SD

Printed 6/26/2024 8:15:13 AM

General Fund (10)

2120 Guidance Services	Elementary	Secondary	Federal	Total
100 Personnel Services – Salaries				
100 Personnel Services – Salaries	465,303.08	310,202.06	20,964.02	796,469.16
Total Personnel Services – Salaries	\$465,303.08	\$310,202.06	\$20,964.02	\$796,469.16
200 Personnel Services – Employee Benefits				
210 Group Insurance – Contracted Provider	71,262.22	47,508.14	3,854.59	122,624.95
220 Social Security Contributions	34,658.84	23,105.90	1,565.37	59,330.11
230 PSERS Retirement Contributions	166,688.78	111,125.85	2,217.59	280,032.22
Total Personnel Services – Employee Benefits	\$272,609.84	\$181,739.89	\$7,637.55	\$461,987.28
300 Purchased Professional and Technical Services				
329 Professional Educational Services – Other			284,407.17	284,407.17
390 Other Purchased Professional and Technical Services	6,255.00	4,170.00		10,425.00
Total Purchased Professional and Technical Services	\$6,255.00	\$4,170.00	\$284,407.17	\$294,832.17
500 Other Purchased Services				
549 Other Advertising/Public Relations	823.61	549.07		1,372.68
580 Travel	172.01	114.67	1,867.20	2,153.88
Total Other Purchased Services	\$995.62	\$663.74	\$1,867.20	\$3,526.56
600 Supplies				
610 General Supplies			4,562.28	4,562.28
640 Books and Periodicals			31,365.30	31,365.30
Total Supplies			\$35,927.58	\$35,927.58
Total 2120 Guidance Services	\$745,163.54	\$496,775.69	\$350,803.52	\$1,592,742.75

LEA : 123466403 Pottstown SD

Printed 6/26/2024 8:15:13 AM

General Fund (10)

2130 Attendance Services

	<u>Elementary</u>	<u>Secondary</u>	<u>Federal</u>	<u>Total</u>
100 <u>Personnel Services – Salaries</u>				
100 Personnel Services – Salaries			21,120.00	68,640.00
Total Personnel Services – Salaries			\$21,120.00	\$68,640.00
200 <u>Personnel Services – Employee Benefits</u>				
210 Group Insurance – Contracted Provider			4,450.66	13,912.38
220 Social Security Contributions			1,574.29	5,118.78
230 PSERS Retirement Contributions			2,234.08	24,139.74
Total Personnel Services – Employee Benefits			\$8,259.03	\$43,170.90
Total 2130 Attendance Services			\$29,379.03	\$111,810.90

LEA : 123466403 Pottstown SD

Printed 6/26/2024 8:15:13 AM

General Fund (10)

2140 Psychological Services	Elementary	Secondary	Federal	Total
100 <u>Personnel Services – Salaries</u>				
100 Personnel Services – Salaries	288,865.79	192,577.19	35,621.25	517,064.23
Total Personnel Services – Salaries	\$288,865.79	\$192,577.19	\$35,621.25	\$517,064.23
200 <u>Personnel Services – Employee Benefits</u>				
210 Group Insurance – Contracted Provider	39,093.49	26,062.32	4,475.91	69,631.72
220 Social Security Contributions	21,264.29	14,176.19	2,602.50	38,042.98
230 PSERS Retirement Contributions	106,779.46	71,186.31	3,897.57	181,863.34
Total Personnel Services – Employee Benefits	\$167,137.24	\$111,424.82	\$10,975.98	\$289,538.04
300 <u>Purchased Professional and Technical Services</u>				
322 Professional Educational Services – Ius	93,244.67	62,163.12		155,407.79
330 Other Professional Services	53,204.07	35,469.38		88,673.45
Total Purchased Professional and Technical Services	\$146,448.74	\$97,632.50		\$244,081.24
500 <u>Other Purchased Services</u>				
580 Travel	130.65	87.10		217.75
Total Other Purchased Services	\$130.65	\$87.10		\$217.75
600 <u>Supplies</u>				
610 General Supplies	4,814.48	3,209.65		8,024.13
Total Supplies	\$4,814.48	\$3,209.65		\$8,024.13
Total 2140 Psychological Services	\$607,396.90	\$404,931.26	\$46,597.23	\$1,058,925.39

LEA : 123466403 Pottstown SD

Printed 6/26/2024 8:15:13 AM

General Fund (10)

2150 Speech Pathology and Audiology Services	Elementary	Secondary	Federal	Total
100 Personnel Services – Salaries				
100 Personnel Services – Salaries	292,956.26	195,304.18		488,260.44
Total Personnel Services – Salaries	\$292,956.26	\$195,304.18		\$488,260.44
200 Personnel Services – Employee Benefits				
210 Group Insurance – Contracted Provider	43,695.67	29,130.44		72,826.11
220 Social Security Contributions	21,885.01	14,590.00		36,475.01
230 PSERS Retirement Contributions	103,028.48	68,685.65		171,714.13
Total Personnel Services – Employee Benefits	\$168,609.16	\$112,406.09		\$281,015.25
300 Purchased Professional and Technical Services				
322 Professional Educational Services – Ius	2,239.13	1,492.75		3,731.88
323 Professional Educational Services – Other Educational Agencies	358.80	239.20		598.00
Total Purchased Professional and Technical Services	\$2,597.93	\$1,731.95		\$4,329.88
600 Supplies				
610 General Supplies	4,208.27	2,805.51		7,013.78
640 Books and Periodicals	1,195.45	796.97		1,992.42
Total Supplies	\$5,403.72	\$3,602.48		\$9,006.20
800 Other Objects				
810 Dues and Fees	178.80	119.20	506.00	804.00
Total Other Objects	\$178.80	\$119.20	\$506.00	\$804.00
Total 2150 Speech Pathology and Audiology Services	\$469,745.87	\$313,163.90	\$506.00	\$783,415.77

LEA : 123466403 Pottstown SD

Printed 6/26/2024 8:15:13 AM

General Fund (10)

2160 Social Work Services	<u>Elementary</u>	<u>Secondary</u>	<u>Federal</u>	<u>Total</u>
100 <u>Personnel Services – Salaries</u>				
100 Personnel Services – Salaries			21,120.00	229,331.14
Total Personnel Services – Salaries			\$21,120.00	\$229,331.14
200 <u>Personnel Services – Employee Benefits</u>				
210 Group Insurance – Contracted Provider			2,093.46	42,018.00
220 Social Security Contributions			1,579.30	17,059.99
230 PSERS Retirement Contributions			2,234.08	80,796.46
Total Personnel Services – Employee Benefits			\$5,906.84	\$139,874.45
300 <u>Purchased Professional and Technical Services</u>				
330 Other Professional Services				49,800.00
Total Purchased Professional and Technical Services				\$49,800.00
500 <u>Other Purchased Services</u>				
580 Travel				305.52
Total Other Purchased Services				\$305.52
Total 2160 Social Work Services			\$27,026.84	\$419,311.11

LEA : 123466403 Pottstown SD

Printed 6/26/2024 8:15:13 AM

General Fund (10)				
2170 Student Accounting Services	<u>Elementary</u>	<u>Secondary</u>	<u>Federal</u>	<u>Total</u>
100 <u>Personnel Services – Salaries</u>				
100 Personnel Services – Salaries				31,836.55
Total Personnel Services – Salaries				\$31,836.55
200 <u>Personnel Services – Employee Benefits</u>				
210 Group Insurance – Contracted Provider				9,187.66
220 Social Security Contributions				3,005.80
230 PSERS Retirement Contributions				9,294.76
250 Unemployment Compensation				4,255.25
Total Personnel Services – Employee Benefits				\$25,743.47
300 <u>Purchased Professional and Technical Services</u>				
322 Professional Educational Services – Ius				46,200.00
390 Other Purchased Professional and Technical Services				970.00
Total Purchased Professional and Technical Services				\$47,170.00
500 <u>Other Purchased Services</u>				
580 Travel				1,420.95
Total Other Purchased Services				\$1,420.95
600 <u>Supplies</u>				
650 Supplies & Fees – Technology Related				9,785.00
Total Supplies				\$9,785.00
Total 2170 Student Accounting Services				\$115,955.97

LEA : 123466403 Pottstown SD

Printed 6/26/2024 8:15:13 AM

General Fund (10)

2200 Support Services – Instructional Staff	Elementary	Secondary	Federal	Total
100 <u>Personnel Services – Salaries</u>				
100 Personnel Services – Salaries	559,223.68	372,815.79	113,009.52	1,045,048.99
Total Personnel Services – Salaries	\$559,223.68	\$372,815.79	\$113,009.52	\$1,045,048.99
200 <u>Personnel Services – Employee Benefits</u>				
210 Group Insurance – Contracted Provider	109,451.07	72,967.37	11,023.99	193,442.43
220 Social Security Contributions	40,590.93	27,060.62	8,454.02	76,105.57
230 PSERS Retirement Contributions	210,192.54	140,128.35	12,176.29	362,497.18
240 Tuition Reimbursement	34,780.91	23,187.28		57,968.19
299 All Other Employee Benefits			15,000.00	15,000.00
Total Personnel Services – Employee Benefits	\$395,015.45	\$263,343.62	\$46,654.30	\$705,013.37
300 <u>Purchased Professional and Technical Services</u>				
322 Professional Educational Services – lus	63,648.00	42,432.00		106,080.00
329 Professional Educational Services – Other	50,844.10	33,896.07	99,250.00	183,990.17
360 Employee Training and Development Services	888.96	592.64	10,547.00	12,028.60
390 Other Purchased Professional and Technical Services	1,700.40	1,133.60		2,834.00
Total Purchased Professional and Technical Services	\$117,081.46	\$78,054.31	\$109,797.00	\$304,932.77
400 <u>Purchased Property Services</u>				
430 Repairs and Maintenance Services	29,332.51	19,555.00	24,800.00	73,687.51
440 Rentals	6,947.22	4,631.48		11,578.70
Total Purchased Property Services	\$36,279.73	\$24,186.48	\$24,800.00	\$85,266.21
500 <u>Other Purchased Services</u>				
530 Communications	2,453.04	1,635.36	8,258.75	12,347.15
580 Travel	1,439.72	959.81	3,301.95	5,701.48
Total Other Purchased Services	\$3,892.76	\$2,595.17	\$11,560.70	\$18,048.63
600 <u>Supplies</u>				
610 General Supplies	39,088.62	26,059.08		65,147.70
640 Books and Periodicals	48,324.92	32,216.62	(491.40)	80,050.14
650 Supplies & Fees – Technology Related	290,335.79	193,557.20	39,987.37	523,880.36
Total Supplies	\$377,749.33	\$251,832.90	\$39,495.97	\$669,078.20
700 <u>Property</u>				
790 Other Property	77,185.10	51,456.73		128,641.83
Total Property	\$77,185.10	\$51,456.73		\$128,641.83
800 <u>Other Objects</u>				
810 Dues and Fees	364.80	243.20		608.00
Total Other Objects	\$364.80	\$243.20		\$608.00
Total 2200 Support Services – Instructional Staff	\$1,566,792.31	\$1,044,528.20	\$345,317.49	\$2,956,638.00

LEA : 123466403 Pottstown SD

Printed 6/26/2024 8:15:13 AM

General Fund (10)

2210 Supervision of Educational Media Services	<u>Elementary</u>	<u>Secondary</u>	<u>Federal</u>	<u>Total</u>
100 <u>Personnel Services – Salaries</u>				
100 Personnel Services – Salaries	46,853.10	31,235.40		78,088.50
Total Personnel Services – Salaries	\$46,853.10	\$31,235.40		\$78,088.50
200 <u>Personnel Services – Employee Benefits</u>				
210 Group Insurance – Contracted Provider	10,837.09	7,224.73		18,061.82
220 Social Security Contributions	3,512.84	2,341.89		5,854.73
230 PSERS Retirement Contributions	16,589.17	11,059.44		27,648.61
299 All Other Employee Benefits			15,000.00	15,000.00
Total Personnel Services – Employee Benefits	\$30,939.10	\$20,626.06	\$15,000.00	\$66,565.16
300 <u>Purchased Professional and Technical Services</u>				
322 Professional Educational Services – Ius	63,648.00	42,432.00		106,080.00
Total Purchased Professional and Technical Services	\$63,648.00	\$42,432.00		\$106,080.00
500 <u>Other Purchased Services</u>				
530 Communications	2,058.51	1,372.34		3,430.85
Total Other Purchased Services	\$2,058.51	\$1,372.34		\$3,430.85
600 <u>Supplies</u>				
650 Supplies & Fees – Technology Related	76,179.60	50,786.40		126,966.00
Total Supplies	\$76,179.60	\$50,786.40		\$126,966.00
Total 2210 Supervision of Educational Media Services	\$219,678.31	\$146,452.20	\$15,000.00	\$381,130.51

LEA : 123466403 Pottstown SD

Printed 6/26/2024 8:15:13 AM

General Fund (10)

2211 Supervision of Educational Media Services – Head of Component	<u>Elementary</u>	<u>Secondary</u>	<u>Federal</u>	<u>Total</u>
100 <u>Personnel Services – Salaries</u>				
100 Personnel Services – Salaries	46,853.10	31,235.40		78,088.50
Total Personnel Services – Salaries	\$46,853.10	\$31,235.40		\$78,088.50
200 <u>Personnel Services – Employee Benefits</u>				
210 Group Insurance – Contracted Provider	10,837.09	7,224.73		18,061.82
220 Social Security Contributions	3,512.84	2,341.89		5,854.73
230 PSERS Retirement Contributions	16,589.17	11,059.44		27,648.61
299 All Other Employee Benefits			15,000.00	15,000.00
Total Personnel Services – Employee Benefits	\$30,939.10	\$20,626.06	\$15,000.00	\$66,565.16
300 <u>Purchased Professional and Technical Services</u>				
322 Professional Educational Services – Ius	63,648.00	42,432.00		106,080.00
Total Purchased Professional and Technical Services	\$63,648.00	\$42,432.00		\$106,080.00
500 <u>Other Purchased Services</u>				
530 Communications	2,058.51	1,372.34		3,430.85
Total Other Purchased Services	\$2,058.51	\$1,372.34		\$3,430.85
600 <u>Supplies</u>				
650 Supplies & Fees – Technology Related	76,179.60	50,786.40		126,966.00
Total Supplies	\$76,179.60	\$50,786.40		\$126,966.00
Total 2211 Supervision of Educational Media Services – Head of Component	\$219,678.31	\$146,452.20	\$15,000.00	\$381,130.51

LEA : 123466403 Pottstown SD

Printed 6/26/2024 8:15:13 AM

General Fund (10)

2220 Technology Support Services	Elementary	Secondary	Federal	Total
100 <u>Personnel Services – Salaries</u>				
100 Personnel Services – Salaries	156,152.69	104,101.80		260,254.49
Total Personnel Services – Salaries	\$156,152.69	\$104,101.80		\$260,254.49
200 <u>Personnel Services – Employee Benefits</u>				
210 Group Insurance – Contracted Provider	37,942.82	25,295.21		63,238.03
220 Social Security Contributions	11,226.19	7,484.12		18,710.31
230 PSERS Retirement Contributions	55,261.53	36,841.02		92,102.55
Total Personnel Services – Employee Benefits	\$104,430.54	\$69,620.35		\$174,050.89
300 <u>Purchased Professional and Technical Services</u>				
329 Professional Educational Services – Other			87,260.00	87,260.00
Total Purchased Professional and Technical Services			\$87,260.00	\$87,260.00
500 <u>Other Purchased Services</u>				
530 Communications			7,843.58	7,843.58
580 Travel	1,427.98	951.98		2,379.96
Total Other Purchased Services	\$1,427.98	\$951.98	\$7,843.58	\$10,223.54
600 <u>Supplies</u>				
610 General Supplies	9,158.40	6,105.60		15,264.00
650 Supplies & Fees – Technology Related			10,539.21	10,539.21
Total Supplies	\$9,158.40	\$6,105.60	\$10,539.21	\$25,803.21
Total 2220 Technology Support Services	\$271,169.61	\$180,779.73	\$105,642.79	\$557,592.13

LEA : 123466403 Pottstown SD

Printed 6/26/2024 8:15:13 AM

General Fund (10)

2230 Educational Television Services	<u>Elementary</u>	<u>Secondary</u>	<u>Federal</u>	<u>Total</u>
600 <u>Supplies</u>				
650 Supplies & Fees – Technology Related			2,881.00	2,881.00
Total Supplies			\$2,881.00	\$2,881.00
Total 2230 Educational Television Services			\$2,881.00	\$2,881.00

LEA : 123466403 Pottstown SD

Printed 6/26/2024 8:15:13 AM

General Fund (10)

2240 Computer-Assisted Instruction Support Services	<u>Elementary</u>	<u>Secondary</u>	<u>Federal</u>	<u>Total</u>
300 <u>Purchased Professional and Technical Services</u>				
329 Professional Educational Services – Other	12,720.10	8,480.07		21,200.17
390 Other Purchased Professional and Technical Services	861.00	574.00		1,435.00
Total Purchased Professional and Technical Services	\$13,581.10	\$9,054.07		\$22,635.17
400 <u>Purchased Property Services</u>				
430 Repairs and Maintenance Services	29,332.51	19,555.00	24,800.00	73,687.51
440 Rentals	6,947.22	4,631.48		11,578.70
Total Purchased Property Services	\$36,279.73	\$24,186.48	\$24,800.00	\$85,266.21
600 <u>Supplies</u>				
610 General Supplies	23,653.95	15,769.30		39,423.25
640 Books and Periodicals	32,751.11	21,834.08		54,585.19
650 Supplies & Fees – Technology Related	214,156.19	142,770.80	26,567.16	383,494.15
Total Supplies	\$270,561.25	\$180,374.18	\$26,567.16	\$477,502.59
700 <u>Property</u>				
790 Other Property	77,185.10	51,456.73		128,641.83
Total Property	\$77,185.10	\$51,456.73		\$128,641.83
Total 2240 Computer-Assisted Instruction Support Services	\$397,607.18	\$265,071.46	\$51,367.16	\$714,045.80

LEA : 123466403 Pottstown SD

Printed 6/26/2024 8:15:13 AM

General Fund (10)

2250 School Library Services	<u>Elementary</u>	<u>Secondary</u>	<u>Federal</u>	<u>Total</u>
100 <u>Personnel Services – Salaries</u>				
100 Personnel Services – Salaries	190,508.24	127,005.50		317,513.74
Total Personnel Services – Salaries	\$190,508.24	\$127,005.50		\$317,513.74
200 <u>Personnel Services – Employee Benefits</u>				
210 Group Insurance – Contracted Provider	35,927.38	23,951.58		59,878.96
220 Social Security Contributions	13,641.98	9,094.66		22,736.64
230 PSERS Retirement Contributions	64,232.71	42,821.80		107,054.51
Total Personnel Services – Employee Benefits	\$113,802.07	\$75,868.04		\$189,670.11
600 <u>Supplies</u>				
610 General Supplies	2,000.89	1,333.92		3,334.81
640 Books and Periodicals	15,962.00	10,641.33		26,603.33
Total Supplies	\$17,962.89	\$11,975.25		\$29,938.14
Total 2250 School Library Services	\$322,273.20	\$214,848.79		\$537,121.99

LEA : 123466403 Pottstown SD

Printed 6/26/2024 8:15:13 AM

General Fund (10)

2260 Instruction and Curriculum Development Services	<u>Elementary</u>	<u>Secondary</u>	<u>Federal</u>	<u>Total</u>
100 <u>Personnel Services – Salaries</u>				
100 Personnel Services – Salaries	153,172.51	102,115.00	7,035.49	262,323.00
Total Personnel Services – Salaries	\$153,172.51	\$102,115.00	\$7,035.49	\$262,323.00
200 <u>Personnel Services – Employee Benefits</u>				
210 Group Insurance – Contracted Provider	24,829.04	16,552.69		41,381.73
220 Social Security Contributions	11,272.93	7,515.29	532.10	19,320.32
230 PSERS Retirement Contributions	54,139.22	36,092.82	1,038.67	91,270.71
Total Personnel Services – Employee Benefits	\$90,241.19	\$60,160.80	\$1,570.77	\$151,972.76
300 <u>Purchased Professional and Technical Services</u>				
329 Professional Educational Services – Other	38,124.00	25,416.00		63,540.00
390 Other Purchased Professional and Technical Services	839.40	559.60		1,399.00
Total Purchased Professional and Technical Services	\$38,963.40	\$25,975.60		\$64,939.00
500 <u>Other Purchased Services</u>				
530 Communications	371.89	247.93		619.82
580 Travel	11.74	7.83		19.57
Total Other Purchased Services	\$383.63	\$255.76		\$639.39
600 <u>Supplies</u>				
610 General Supplies	4,166.42	2,777.62		6,944.04
640 Books and Periodicals	(388.19)	(258.79)	(491.40)	(1,138.38)
Total Supplies	\$3,778.23	\$2,518.83	(\$491.40)	\$5,805.66
800 <u>Other Objects</u>				
810 Dues and Fees	364.80	243.20		608.00
Total Other Objects	\$364.80	\$243.20		\$608.00
Total 2260 Instruction and Curriculum Development Services	\$286,903.76	\$191,269.19	\$8,114.86	\$486,287.81

LEA : 123466403 Pottstown SD

Printed 6/26/2024 8:15:13 AM

General Fund (10)

2270 Instructional Staff Professional Development Services	<u>Elementary</u>	<u>Secondary</u>	<u>Federal</u>	<u>Total</u>
100 <u>Personnel Services – Salaries</u>				
100 Personnel Services – Salaries			105,974.03	105,974.03
Total Personnel Services – Salaries			\$105,974.03	\$105,974.03
200 <u>Personnel Services – Employee Benefits</u>				
210 Group Insurance – Contracted Provider	(85.26)	(56.84)	11,023.99	10,881.89
220 Social Security Contributions			7,921.92	7,921.92
230 PSERS Retirement Contributions	15,651.30	10,434.20	11,137.62	37,223.12
240 Tuition Reimbursement	34,780.91	23,187.28		57,968.19
Total Personnel Services – Employee Benefits	\$50,346.95	\$33,564.64	\$30,083.53	\$113,995.12
300 <u>Purchased Professional and Technical Services</u>				
329 Professional Educational Services – Other			11,990.00	11,990.00
360 Employee Training and Development Services	888.96	592.64	10,547.00	12,028.60
Total Purchased Professional and Technical Services	\$888.96	\$592.64	\$22,537.00	\$24,018.60
500 <u>Other Purchased Services</u>				
530 Communications	22.64	15.09	415.17	452.90
580 Travel			3,301.95	3,301.95
Total Other Purchased Services	\$22.64	\$15.09	\$3,717.12	\$3,754.85
600 <u>Supplies</u>				
610 General Supplies	108.96	72.64		181.60
Total Supplies	\$108.96	\$72.64		\$181.60
Total 2270 Instructional Staff Professional Development Services	\$51,367.51	\$34,245.01	\$162,311.68	\$247,924.20

LEA : 123466403 Pottstown SD

Printed 6/26/2024 8:15:13 AM

General Fund (10)

2290 Other Instructional Staff Services	<u>Elementary</u>	<u>Secondary</u>	<u>Federal</u>	<u>Total</u>
100 <u>Personnel Services – Salaries</u>				
100 Personnel Services – Salaries	12,537.14	8,358.09		20,895.23
Total Personnel Services – Salaries	\$12,537.14	\$8,358.09		\$20,895.23
200 <u>Personnel Services – Employee Benefits</u>				
220 Social Security Contributions	936.99	624.66		1,561.65
230 PSERS Retirement Contributions	4,318.61	2,879.07		7,197.68
Total Personnel Services – Employee Benefits	\$5,255.60	\$3,503.73		\$8,759.33
Total 2290 Other Instructional Staff Services	\$17,792.74	\$11,861.82		\$29,654.56

LEA : 123466403 Pottstown SD

Printed 6/26/2024 8:15:13 AM

General Fund (10)

2300 Support Services – Administration	Elementary	Secondary	Federal	Total
100 <u>Personnel Services – Salaries</u>				
100 Personnel Services – Salaries	862,983.13	575,322.08	168,534.93	1,920,586.50
Total Personnel Services – Salaries	\$862,983.13	\$575,322.08	\$168,534.93	\$1,920,586.50
200 <u>Personnel Services – Employee Benefits</u>				
210 Group Insurance – Contracted Provider	162,703.07	108,468.71	20,398.83	337,263.83
220 Social Security Contributions	63,504.73	42,336.49	12,496.74	138,701.75
230 PSERS Retirement Contributions	325,211.71	216,807.81	18,913.54	671,878.48
250 Unemployment Compensation	845.51	563.68		1,409.19
280 Other Post-Employment Benefits (OPEB)				8,584.50
299 All Other Employee Benefits	10,622.57	7,081.71		32,754.28
Total Personnel Services – Employee Benefits	\$562,887.59	\$375,258.40	\$51,809.11	\$1,190,592.03
300 <u>Purchased Professional and Technical Services</u>				
330 Other Professional Services	13,125.44	8,750.29		487,974.85
390 Other Purchased Professional and Technical Services				49,539.02
Total Purchased Professional and Technical Services	\$13,125.44	\$8,750.29		\$537,513.87
400 <u>Purchased Property Services</u>				
440 Rentals	9,405.29	6,270.20		16,762.58
Total Purchased Property Services	\$9,405.29	\$6,270.20		\$16,762.58
500 <u>Other Purchased Services</u>				
520 Insurance – General	16.20	10.80		277,649.00
530 Communications	9,549.06	6,366.04		23,981.71
549 Other Advertising/Public Relations				4,557.41
580 Travel	92.01	61.34		1,651.67
Total Other Purchased Services	\$9,657.27	\$6,438.18		\$307,839.79
600 <u>Supplies</u>				
610 General Supplies	96,029.72	64,019.82		200,774.33
640 Books and Periodicals	10.80	7.20		18.00
650 Supplies & Fees – Technology Related				63,037.21
Total Supplies	\$96,040.52	\$64,027.02		\$263,829.54
800 <u>Other Objects</u>				
810 Dues and Fees	2,458.80	1,639.20		22,308.58
820 Claims and Judgments Against the LEA				35,000.00
Total Other Objects	\$2,458.80	\$1,639.20		\$57,308.58
Total 2300 Support Services – Administration	\$1,556,558.04	\$1,037,705.37	\$220,344.04	\$4,294,432.89

LEA : 123466403 Pottstown SD

Printed 6/26/2024 8:15:13 AM

General Fund (10)				
2310 Board Services	<u>Elementary</u>	<u>Secondary</u>	<u>Federal</u>	<u>Total</u>
300 <u>Purchased Professional and Technical Services</u>				
330 Other Professional Services				141,686.33
Total Purchased Professional and Technical Services				\$141,686.33
500 <u>Other Purchased Services</u>				
520 Insurance – General				277,622.00
549 Other Advertising/Public Relations				4,557.41
Total Other Purchased Services				\$282,179.41
600 <u>Supplies</u>				
610 General Supplies				5,483.00
Total Supplies				\$5,483.00
800 <u>Other Objects</u>				
810 Dues and Fees				12,742.55
820 Claims and Judgments Against the LEA				35,000.00
Total Other Objects				\$47,742.55
Total 2310 Board Services				\$477,091.29

LEA : 123466403 Pottstown SD

Printed 6/26/2024 8:15:13 AM

General Fund (10)

2330 Tax Assessment and Collection Services	<u>Elementary</u>	<u>Secondary</u>	<u>Federal</u>	<u>Total</u>
300 <u>Purchased Professional and Technical Services</u>				
330 Other Professional Services				304,260.92
390 Other Purchased Professional and Technical Services				48,625.02
Total Purchased Professional and Technical Services				\$352,885.94
400 <u>Purchased Property Services</u>				
440 Rentals				1,087.09
Total Purchased Property Services				\$1,087.09
500 <u>Other Purchased Services</u>				
530 Communications				6,751.75
Total Other Purchased Services				\$6,751.75
600 <u>Supplies</u>				
610 General Supplies				71.55
Total Supplies				\$71.55
Total 2330 Tax Assessment and Collection Services				\$360,796.33

LEA : 123466403 Pottstown SD

Printed 6/26/2024 8:15:13 AM

General Fund (10)

2340 Staff Relations and Negotiations Services	<u>Elementary</u>	<u>Secondary</u>	<u>Federal</u>	<u>Total</u>
100 <u>Personnel Services – Salaries</u>				
100 Personnel Services – Salaries				20,506.58
Total Personnel Services – Salaries				\$20,506.58
200 <u>Personnel Services – Employee Benefits</u>				
210 Group Insurance – Contracted Provider				4,016.31
220 Social Security Contributions				1,525.09
230 PSERS Retirement Contributions				7,260.45
Total Personnel Services – Employee Benefits				\$12,801.85
300 <u>Purchased Professional and Technical Services</u>				
330 Other Professional Services				15,824.87
Total Purchased Professional and Technical Services				\$15,824.87
500 <u>Other Purchased Services</u>				
530 Communications				546.36
580 Travel				32.50
Total Other Purchased Services				\$578.86
600 <u>Supplies</u>				
610 General Supplies				747.23
650 Supplies & Fees – Technology Related				63,037.21
Total Supplies				\$63,784.44
800 <u>Other Objects</u>				
810 Dues and Fees				4,135.03
Total Other Objects				\$4,135.03
Total 2340 Staff Relations and Negotiations Services				\$117,631.63

LEA : 123466403 Pottstown SD

Printed 6/26/2024 8:15:13 AM

General Fund (10)

2350 Legal and Accounting Services	<u>Elementary</u>	<u>Secondary</u>	<u>Federal</u>	<u>Total</u>
300 <u>Purchased Professional and Technical Services</u>				
330 Other Professional Services				4,082.00
Total Purchased Professional and Technical Services				\$4,082.00
Total 2350 Legal and Accounting Services				\$4,082.00

LEA : 123466403 Pottstown SD

Printed 6/26/2024 8:15:13 AM

General Fund (10)

2360 Office of the Superintendent / Executive Director Services	<u>Elementary</u>	<u>Secondary</u>	<u>Federal</u>	<u>Total</u>
100 <u>Personnel Services – Salaries</u>				
100 Personnel Services – Salaries				270,659.26
Total Personnel Services – Salaries				\$270,659.26
200 <u>Personnel Services – Employee Benefits</u>				
210 Group Insurance – Contracted Provider				37,531.00
220 Social Security Contributions				17,143.00
230 PSERS Retirement Contributions				95,831.89
280 Other Post-Employment Benefits (OPEB)				8,584.50
299 All Other Employee Benefits				15,050.00
Total Personnel Services – Employee Benefits				\$174,140.39
300 <u>Purchased Professional and Technical Services</u>				
330 Other Professional Services				245.00
390 Other Purchased Professional and Technical Services				914.00
Total Purchased Professional and Technical Services				\$1,159.00
500 <u>Other Purchased Services</u>				
530 Communications	3,004.66	2,003.10		5,007.76
580 Travel				1,354.14
Total Other Purchased Services	\$3,004.66	\$2,003.10		\$6,361.90
600 <u>Supplies</u>				
610 General Supplies				34,370.53
Total Supplies				\$34,370.53
800 <u>Other Objects</u>				
810 Dues and Fees				1,038.00
Total Other Objects				\$1,038.00
Total 2360 Office of the Superintendent / Executive Director Services	\$3,004.66	\$2,003.10		\$487,729.08

LEA : 123466403 Pottstown SD

Printed 6/26/2024 8:15:13 AM

General Fund (10)

2370 Community Relations Services	<u>Elementary</u>	<u>Secondary</u>	<u>Federal</u>	<u>Total</u>
100 <u>Personnel Services – Salaries</u>				
100 Personnel Services – Salaries				22,580.52
Total Personnel Services – Salaries				\$22,580.52
200 <u>Personnel Services – Employee Benefits</u>				
210 Group Insurance – Contracted Provider				4,145.91
220 Social Security Contributions				1,695.70
230 PSERS Retirement Contributions				7,853.08
Total Personnel Services – Employee Benefits				\$13,694.69
500 <u>Other Purchased Services</u>				
530 Communications				768.50
580 Travel				111.68
Total Other Purchased Services				\$880.18
600 <u>Supplies</u>				
610 General Supplies				52.48
Total Supplies				\$52.48
800 <u>Other Objects</u>				
810 Dues and Fees				295.00
Total Other Objects				\$295.00
Total 2370 Community Relations Services				\$37,502.87

LEA : 123466403 Pottstown SD

Printed 6/26/2024 8:15:13 AM

General Fund (10)

2380 Office of the Principal Services	Elementary	Secondary	Federal	Total
100 <u>Personnel Services – Salaries</u>				
100 Personnel Services – Salaries	862,983.13	575,322.08	168,534.93	1,606,840.14
Total Personnel Services – Salaries	\$862,983.13	\$575,322.08	\$168,534.93	\$1,606,840.14
200 <u>Personnel Services – Employee Benefits</u>				
210 Group Insurance – Contracted Provider	162,703.07	108,468.71	20,398.83	291,570.61
220 Social Security Contributions	63,504.73	42,336.49	12,496.74	118,337.96
230 PSERS Retirement Contributions	325,211.71	216,807.81	18,913.54	560,933.06
250 Unemployment Compensation	845.51	563.68		1,409.19
299 All Other Employee Benefits	10,622.57	7,081.71		17,704.28
Total Personnel Services – Employee Benefits	\$562,887.59	\$375,258.40	\$51,809.11	\$989,955.10
300 <u>Purchased Professional and Technical Services</u>				
330 Other Professional Services	13,125.44	8,750.29		21,875.73
Total Purchased Professional and Technical Services	\$13,125.44	\$8,750.29		\$21,875.73
400 <u>Purchased Property Services</u>				
440 Rentals	9,405.29	6,270.20		15,675.49
Total Purchased Property Services	\$9,405.29	\$6,270.20		\$15,675.49
500 <u>Other Purchased Services</u>				
520 Insurance – General	16.20	10.80		27.00
530 Communications	6,544.40	4,362.94		10,907.34
580 Travel	92.01	61.34		153.35
Total Other Purchased Services	\$6,652.61	\$4,435.08		\$11,087.69
600 <u>Supplies</u>				
610 General Supplies	96,029.72	64,019.82		160,049.54
640 Books and Periodicals	10.80	7.20		18.00
Total Supplies	\$96,040.52	\$64,027.02		\$160,067.54
800 <u>Other Objects</u>				
810 Dues and Fees	2,458.80	1,639.20		4,098.00
Total Other Objects	\$2,458.80	\$1,639.20		\$4,098.00
Total 2380 Office of the Principal Services	\$1,553,553.38	\$1,035,702.27	\$220,344.04	\$2,809,599.69

LEA : 123466403 Pottstown SD

Printed 6/26/2024 8:15:13 AM

General Fund (10)					
2400 Support Services – Pupil Health		Elementary	Secondary	Federal	Total
100 Personnel Services – Salaries					
100 Personnel Services – Salaries				65,960.13	449,139.36
Total Personnel Services – Salaries				\$65,960.13	\$449,139.36
200 Personnel Services – Employee Benefits					
210 Group Insurance – Contracted Provider				21,640.59	73,062.37
220 Social Security Contributions				4,783.85	33,419.93
230 PSERS Retirement Contributions				23,116.28	157,402.23
Total Personnel Services – Employee Benefits				\$49,540.72	\$263,884.53
300 Purchased Professional and Technical Services					
330 Other Professional Services				19,582.05	692,488.19
390 Other Purchased Professional and Technical Services					1,735.00
Total Purchased Professional and Technical Services				\$19,582.05	\$694,223.19
500 Other Purchased Services					
530 Communications					619.22
580 Travel					592.60
Total Other Purchased Services					\$1,211.82
600 Supplies					
610 General Supplies					28,072.14
640 Books and Periodicals				56,980.00	56,980.00
650 Supplies & Fees – Technology Related				10,390.00	10,390.00
Total Supplies				\$67,370.00	\$95,442.14
800 Other Objects					
810 Dues and Fees					130.00
Total Other Objects					\$130.00
Total 2400 Support Services – Pupil Health				\$202,452.90	\$1,504,031.04

LEA : 123466403 Pottstown SD

Printed 6/26/2024 8:15:13 AM

General Fund (10)				
2420 Medical Services				
	<u>Elementary</u>	<u>Secondary</u>	<u>Federal</u>	<u>Total</u>
100 <u>Personnel Services – Salaries</u>				
100 Personnel Services – Salaries			65,960.13	264,503.53
Total Personnel Services – Salaries			\$65,960.13	\$264,503.53
200 <u>Personnel Services – Employee Benefits</u>				
210 Group Insurance – Contracted Provider			21,640.59	68,184.35
220 Social Security Contributions			4,783.85	19,028.77
230 PSERS Retirement Contributions			23,116.28	93,545.15
Total Personnel Services – Employee Benefits			\$49,540.72	\$180,758.27
300 <u>Purchased Professional and Technical Services</u>				
330 Other Professional Services			5,500.00	168,724.25
390 Other Purchased Professional and Technical Services				1,735.00
Total Purchased Professional and Technical Services			\$5,500.00	\$170,459.25
500 <u>Other Purchased Services</u>				
530 Communications				619.22
580 Travel				427.52
Total Other Purchased Services				\$1,046.74
600 <u>Supplies</u>				
610 General Supplies				27,667.00
640 Books and Periodicals			56,980.00	56,980.00
Total Supplies			\$56,980.00	\$84,647.00
800 <u>Other Objects</u>				
810 Dues and Fees				130.00
Total Other Objects				\$130.00
Total 2420 Medical Services			\$177,980.85	\$701,544.79

LEA : 123466403 Pottstown SD

Printed 6/26/2024 8:15:13 AM

General Fund (10)

2430 Dental Services

<u>Elementary</u>	<u>Secondary</u>	<u>Federal</u>	<u>Total</u>
-------------------	------------------	----------------	--------------

300 Purchased Professional and Technical Services

330 Other Professional Services			2,098.00
---------------------------------	--	--	----------

Total Purchased Professional and Technical Services			\$2,098.00
--	--	--	-------------------

Total 2430 Dental Services			\$2,098.00
-----------------------------------	--	--	-------------------

LEA : 123466403 Pottstown SD

Printed 6/26/2024 8:15:13 AM

General Fund (10)				
2440 Nursing Services				
	<u>Elementary</u>	<u>Secondary</u>	<u>Federal</u>	<u>Total</u>
100 <u>Personnel Services – Salaries</u>				
100 Personnel Services – Salaries				184,635.83
Total Personnel Services – Salaries				\$184,635.83
200 <u>Personnel Services – Employee Benefits</u>				
210 Group Insurance – Contracted Provider				4,878.02
220 Social Security Contributions				14,391.16
230 PSERS Retirement Contributions				63,857.08
Total Personnel Services – Employee Benefits				\$83,126.26
300 <u>Purchased Professional and Technical Services</u>				
330 Other Professional Services			14,082.05	521,665.94
Total Purchased Professional and Technical Services			\$14,082.05	\$521,665.94
500 <u>Other Purchased Services</u>				
580 Travel				165.08
Total Other Purchased Services				\$165.08
600 <u>Supplies</u>				
610 General Supplies				405.14
650 Supplies & Fees – Technology Related			10,390.00	10,390.00
Total Supplies			\$10,390.00	\$10,795.14
Total 2440 Nursing Services			\$24,472.05	\$800,388.25

LEA : 123466403 Pottstown SD

Printed 6/26/2024 8:15:13 AM

General Fund (10)

2500 Support Services – Business	Elementary	Secondary	Federal	Total
100 <u>Personnel Services – Salaries</u>				
100 Personnel Services – Salaries			19,457.07	559,216.53
Total Personnel Services – Salaries			\$19,457.07	\$559,216.53
200 <u>Personnel Services – Employee Benefits</u>				
210 Group Insurance – Contracted Provider			5,038.03	116,554.54
220 Social Security Contributions			1,482.75	41,359.56
230 PSERS Retirement Contributions			2,109.39	197,917.61
299 All Other Employee Benefits				26,590.00
Total Personnel Services – Employee Benefits			\$8,630.17	\$382,421.71
300 <u>Purchased Professional and Technical Services</u>				
329 Professional Educational Services – Other				26,062.48
330 Other Professional Services			10,990.85	35,540.87
390 Other Purchased Professional and Technical Services			985.34	11,015.14
Total Purchased Professional and Technical Services			\$11,976.19	\$72,618.49
400 <u>Purchased Property Services</u>				
440 Rentals				9,174.10
Total Purchased Property Services				\$9,174.10
500 <u>Other Purchased Services</u>				
520 Insurance – General				4,871.50
530 Communications				15,456.71
580 Travel			318.83	2,679.93
Total Other Purchased Services			\$318.83	\$23,008.14
600 <u>Supplies</u>				
610 General Supplies				25,522.07
640 Books and Periodicals				590.00
650 Supplies & Fees – Technology Related				25,521.17
Total Supplies				\$51,633.24
800 <u>Other Objects</u>				
810 Dues and Fees				9,857.61
Total Other Objects				\$9,857.61
Total 2500 Support Services – Business			\$40,382.26	\$1,107,929.82

LEA : 123466403 Pottstown SD

Printed 6/26/2024 8:15:13 AM

General Fund (10)

2510 Fiscal Services

	<u>Elementary</u>	<u>Secondary</u>	<u>Federal</u>	<u>Total</u>
100 <u>Personnel Services – Salaries</u>				
100 Personnel Services – Salaries			19,457.07	559,216.53
Total Personnel Services – Salaries			\$19,457.07	\$559,216.53
200 <u>Personnel Services – Employee Benefits</u>				
210 Group Insurance – Contracted Provider			5,038.03	116,554.54
220 Social Security Contributions			1,482.75	41,359.56
230 PSERS Retirement Contributions			2,109.39	197,917.61
299 All Other Employee Benefits				26,590.00
Total Personnel Services – Employee Benefits			\$8,630.17	\$382,421.71
300 <u>Purchased Professional and Technical Services</u>				
330 Other Professional Services			10,990.85	35,540.87
390 Other Purchased Professional and Technical Services			985.34	11,015.14
Total Purchased Professional and Technical Services			\$11,976.19	\$46,556.01
400 <u>Purchased Property Services</u>				
440 Rentals				4,318.71
Total Purchased Property Services				\$4,318.71
500 <u>Other Purchased Services</u>				
520 Insurance – General				4,871.50
530 Communications				15,456.71
580 Travel			318.83	2,679.93
Total Other Purchased Services			\$318.83	\$23,008.14
600 <u>Supplies</u>				
610 General Supplies				15,701.41
640 Books and Periodicals				590.00
650 Supplies & Fees – Technology Related				25,521.17
Total Supplies				\$41,812.58
800 <u>Other Objects</u>				
810 Dues and Fees				9,857.61
Total Other Objects				\$9,857.61
Total 2510 Fiscal Services			\$40,382.26	\$1,067,191.29

LEA : 123466403 Pottstown SD

Printed 6/26/2024 8:15:13 AM

General Fund (10)

2511 Supervision of Fiscal Services - Head of Component	<u>Elementary</u>	<u>Secondary</u>	<u>Federal</u>	<u>Total</u>
100 <u>Personnel Services – Salaries</u>				
100 Personnel Services – Salaries				231,617.70
Total Personnel Services – Salaries				\$231,617.70
200 <u>Personnel Services – Employee Benefits</u>				
210 Group Insurance – Contracted Provider				35,388.28
220 Social Security Contributions				17,101.11
230 PSERS Retirement Contributions				81,912.97
299 All Other Employee Benefits				26,590.00
Total Personnel Services – Employee Benefits				\$160,992.36
300 <u>Purchased Professional and Technical Services</u>				
330 Other Professional Services			10,990.85	10,990.85
390 Other Purchased Professional and Technical Services			985.34	985.34
Total Purchased Professional and Technical Services			\$11,976.19	\$11,976.19
500 <u>Other Purchased Services</u>				
580 Travel			318.83	586.30
Total Other Purchased Services			\$318.83	\$586.30
600 <u>Supplies</u>				
610 General Supplies				1,619.06
650 Supplies & Fees – Technology Related				18,621.44
Total Supplies				\$20,240.50
Total 2511 Supervision of Fiscal Services - Head of Component			\$12,295.02	\$425,413.05

LEA : 123466403 Pottstown SD

Printed 6/26/2024 8:15:13 AM

General Fund (10)

2512 Budgeting Services

Elementary Secondary Federal Total

100 <u>Personnel Services – Salaries</u>				
100 Personnel Services – Salaries				90,708.92
Total Personnel Services – Salaries				\$90,708.92
200 <u>Personnel Services – Employee Benefits</u>				
210 Group Insurance – Contracted Provider				19,382.85
220 Social Security Contributions				6,655.78
230 PSERS Retirement Contributions				32,115.02
Total Personnel Services – Employee Benefits				\$58,153.65
300 <u>Purchased Professional and Technical Services</u>				
390 Other Purchased Professional and Technical Services				489.00
Total Purchased Professional and Technical Services				\$489.00
500 <u>Other Purchased Services</u>				
580 Travel				472.00
Total Other Purchased Services				\$472.00
Total 2512 Budgeting Services				\$149,823.57

LEA : 123466403 Pottstown SD

Printed 6/26/2024 8:15:13 AM

General Fund (10)

2513 Receiving and Disbursing Funds Services	<u>Elementary</u>	<u>Secondary</u>	<u>Federal</u>	<u>Total</u>
100 <u>Personnel Services – Salaries</u>				
100 Personnel Services – Salaries				29,742.37
Total Personnel Services – Salaries				\$29,742.37
200 <u>Personnel Services – Employee Benefits</u>				
210 Group Insurance – Contracted Provider				12,484.70
220 Social Security Contributions				2,192.25
230 PSERS Retirement Contributions				10,537.58
Total Personnel Services – Employee Benefits				\$25,214.53
Total 2513 Receiving and Disbursing Funds Services				\$54,956.90

LEA : 123466403 Pottstown SD

Printed 6/26/2024 8:15:13 AM

General Fund (10)

2514 Payroll Services

	<u>Elementary</u>	<u>Secondary</u>	<u>Federal</u>	<u>Total</u>
100 <u>Personnel Services – Salaries</u>				
100 Personnel Services – Salaries			10,683.35	125,958.31
Total Personnel Services – Salaries			\$10,683.35	\$125,958.31
200 <u>Personnel Services – Employee Benefits</u>				
210 Group Insurance – Contracted Provider			2,612.06	35,412.94
220 Social Security Contributions			794.29	9,335.71
230 PSERS Retirement Contributions			1,129.98	44,599.10
Total Personnel Services – Employee Benefits			\$4,536.33	\$89,347.75
500 <u>Other Purchased Services</u>				
580 Travel				29.22
Total Other Purchased Services				\$29.22
600 <u>Supplies</u>				
610 General Supplies				254.96
Total Supplies				\$254.96
Total 2514 Payroll Services			\$15,219.68	\$215,590.24

LEA : 123466403 Pottstown SD

Printed 6/26/2024 8:15:13 AM

General Fund (10)

2515 Financial Accounting Services	<u>Elementary</u>	<u>Secondary</u>	<u>Federal</u>	<u>Total</u>
100 <u>Personnel Services – Salaries</u>				
100 Personnel Services – Salaries			8,773.72	81,189.23
Total Personnel Services – Salaries			\$8,773.72	\$81,189.23
200 <u>Personnel Services – Employee Benefits</u>				
210 Group Insurance – Contracted Provider			2,425.97	13,885.77
220 Social Security Contributions			688.46	6,074.71
230 PSERS Retirement Contributions			979.41	28,752.94
Total Personnel Services – Employee Benefits			\$4,093.84	\$48,713.42
500 <u>Other Purchased Services</u>				
520 Insurance – General				4,493.50
580 Travel				161.84
Total Other Purchased Services				\$4,655.34
600 <u>Supplies</u>				
610 General Supplies				238.52
Total Supplies				\$238.52
Total 2515 Financial Accounting Services			\$12,867.56	\$134,796.51

LEA : 123466403 Pottstown SD

Printed 6/26/2024 8:15:13 AM

General Fund (10)

2519 Other Fiscal Services

Elementary Secondary Federal Total

300 <u>Purchased Professional and Technical Services</u>			
330 Other Professional Services			24,550.02
390 Other Purchased Professional and Technical Services			9,540.80
Total Purchased Professional and Technical Services			\$34,090.82
400 <u>Purchased Property Services</u>			
440 Rentals			4,318.71
Total Purchased Property Services			\$4,318.71
500 <u>Other Purchased Services</u>			
520 Insurance – General			378.00
530 Communications			15,456.71
580 Travel			1,430.57
Total Other Purchased Services			\$17,265.28
600 <u>Supplies</u>			
610 General Supplies			13,588.87
640 Books and Periodicals			590.00
650 Supplies & Fees – Technology Related			6,899.73
Total Supplies			\$21,078.60
800 <u>Other Objects</u>			
810 Dues and Fees			9,857.61
Total Other Objects			\$9,857.61
Total 2519 Other Fiscal Services			\$86,611.02

LEA : 123466403 Pottstown SD

Printed 6/26/2024 8:15:13 AM

General Fund (10)				
2520 Purchasing Services	<u>Elementary</u>	<u>Secondary</u>	<u>Federal</u>	<u>Total</u>
600 <u>Supplies</u>				
610 General Supplies				822.55
Total Supplies				\$822.55
Total 2520 Purchasing Services				\$822.55

LEA : 123466403 Pottstown SD

Printed 6/26/2024 8:15:13 AM

General Fund (10)

2530 Warehousing and Distributing Services	<u>Elementary</u>	<u>Secondary</u>	<u>Federal</u>	<u>Total</u>
300 <u>Purchased Professional and Technical Services</u>				
329 Professional Educational Services – Other				26,062.48
Total Purchased Professional and Technical Services				\$26,062.48
Total 2530 Warehousing and Distributing Services				\$26,062.48

LEA : 123466403 Pottstown SD

Printed 6/26/2024 8:15:13 AM

General Fund (10)

2540 Printing, Publishing and Duplicating Services	<u>Elementary</u>	<u>Secondary</u>	<u>Federal</u>	<u>Total</u>
400 <u>Purchased Property Services</u>				
440 Rentals				4,855.39
Total Purchased Property Services				\$4,855.39
600 <u>Supplies</u>				
610 General Supplies				8,998.11
Total Supplies				\$8,998.11
Total 2540 Printing, Publishing and Duplicating Services				\$13,853.50

LEA : 123466403 Pottstown SD

Printed 6/26/2024 8:15:13 AM

General Fund (10)

2600 Operation and Maintenance of Plant Services	<u>Elementary</u>	<u>Secondary</u>	<u>Federal</u>	<u>Total</u>
100 <u>Personnel Services – Salaries</u>				
100 Personnel Services – Salaries				1,986,993.83
Total Personnel Services – Salaries				\$1,986,993.83
200 <u>Personnel Services – Employee Benefits</u>				
210 Group Insurance – Contracted Provider				319,947.35
220 Social Security Contributions				147,859.44
230 PSERS Retirement Contributions				688,707.40
Total Personnel Services – Employee Benefits				\$1,156,514.19
300 <u>Purchased Professional and Technical Services</u>				
329 Professional Educational Services – Other			30,777.13	30,777.13
330 Other Professional Services				4,000.00
350 Security / Safety Services				552,680.60
390 Other Purchased Professional and Technical Services				158,146.28
Total Purchased Professional and Technical Services			\$30,777.13	\$745,604.01
400 <u>Purchased Property Services</u>				
410 Cleaning Services				242,397.32
420 Utility Services				92,511.20
430 Repairs and Maintenance Services				490,612.98
440 Rentals				3,614.75
460 Extermination Services				10,437.22
Total Purchased Property Services				\$839,573.47
500 <u>Other Purchased Services</u>				
523 General Property and Liability Insurance				19,197.00
529 Other Insurance				22,362.00
530 Communications				51,139.60
580 Travel				135.00
Total Other Purchased Services				\$92,833.60
600 <u>Supplies</u>				
610 General Supplies	422,319.53	281,546.35	19,914.45	723,780.33
620 Energy				617,066.54
650 Supplies & Fees – Technology Related				8,963.45
Total Supplies	\$422,319.53	\$281,546.35	\$19,914.45	\$1,349,810.32
700 <u>Property</u>				
752 Capital Equipment – Original and Additional				12,969.49
762 Capitalized Equipment - Replacement				29,603.00
766 Capitalized Technology Equipment – Replacement				82,946.75
Total Property				\$125,519.24
800 <u>Other Objects</u>				
810 Dues and Fees				2,361.08
Total Other Objects				\$2,361.08
Total 2600 Operation and Maintenance of Plant Services	\$422,319.53	\$281,546.35	\$50,691.58	\$6,299,209.74

LEA : 123466403 Pottstown SD

Printed 6/26/2024 8:15:13 AM

General Fund (10)

2610 Supervision of Operation and Maintenance of Plant Services	<u>Elementary</u>	<u>Secondary</u>	<u>Federal</u>	<u>Total</u>
100 <u>Personnel Services – Salaries</u>				
100 Personnel Services – Salaries				149,950.08
Total Personnel Services – Salaries				\$149,950.08
200 <u>Personnel Services – Employee Benefits</u>				
210 Group Insurance – Contracted Provider				28,327.74
220 Social Security Contributions				11,111.99
230 PSERS Retirement Contributions				53,077.45
Total Personnel Services – Employee Benefits				\$92,517.18
300 <u>Purchased Professional and Technical Services</u>				
390 Other Purchased Professional and Technical Services				495.00
Total Purchased Professional and Technical Services				\$495.00
500 <u>Other Purchased Services</u>				
523 General Property and Liability Insurance				19,197.00
529 Other Insurance				22,362.00
Total Other Purchased Services				\$41,559.00
600 <u>Supplies</u>				
610 General Supplies	494.87	329.92		824.79
Total Supplies	\$494.87	\$329.92		\$824.79
Total 2610 Supervision of Operation and Maintenance of Plant Services	\$494.87	\$329.92		\$285,346.05

LEA : 123466403 Pottstown SD

Printed 6/26/2024 8:15:13 AM

General Fund (10)

2611 Supervision of Operation and Maintenance of Plant Services – Head of Component	<u>Elementary</u>	<u>Secondary</u>	<u>Federal</u>	<u>Total</u>
100 <u>Personnel Services – Salaries</u>				
100 Personnel Services – Salaries				149,950.08
Total Personnel Services – Salaries				\$149,950.08
200 <u>Personnel Services – Employee Benefits</u>				
210 Group Insurance – Contracted Provider				28,327.74
220 Social Security Contributions				11,111.99
230 PSERS Retirement Contributions				53,077.45
Total Personnel Services – Employee Benefits				\$92,517.18
300 <u>Purchased Professional and Technical Services</u>				
390 Other Purchased Professional and Technical Services				495.00
Total Purchased Professional and Technical Services				\$495.00
500 <u>Other Purchased Services</u>				
523 General Property and Liability Insurance				19,197.00
529 Other Insurance				22,362.00
Total Other Purchased Services				\$41,559.00
600 <u>Supplies</u>				
610 General Supplies	494.87	329.92		824.79
Total Supplies	\$494.87	\$329.92		\$824.79
Total 2611 Supervision of Operation and Maintenance of Plant Services – Head of Component	\$494.87	\$329.92		\$285,346.05

LEA : 123466403 Pottstown SD

Printed 6/26/2024 8:15:13 AM

General Fund (10)

2620 Operation of Buildings Services	Elementary	Secondary	Federal	Total
100 <u>Personnel Services – Salaries</u>				
100 Personnel Services – Salaries				1,545,979.08
Total Personnel Services – Salaries				\$1,545,979.08
200 <u>Personnel Services – Employee Benefits</u>				
210 Group Insurance – Contracted Provider				234,393.50
220 Social Security Contributions				115,113.36
230 PSERS Retirement Contributions				536,855.12
Total Personnel Services – Employee Benefits				\$886,361.98
300 <u>Purchased Professional and Technical Services</u>				
330 Other Professional Services				4,000.00
350 Security / Safety Services				116,927.30
390 Other Purchased Professional and Technical Services				157,651.28
Total Purchased Professional and Technical Services				\$278,578.58
400 <u>Purchased Property Services</u>				
410 Cleaning Services				95,019.39
420 Utility Services				92,511.20
430 Repairs and Maintenance Services				480,060.89
440 Rentals				1,322.13
460 Extermination Services				10,437.22
Total Purchased Property Services				\$679,350.83
500 <u>Other Purchased Services</u>				
530 Communications				51,139.60
580 Travel				135.00
Total Other Purchased Services				\$51,274.60
600 <u>Supplies</u>				
610 General Supplies	413,465.62	275,643.75	19,914.45	709,023.82
620 Energy				608,098.72
650 Supplies & Fees – Technology Related				6,088.45
Total Supplies	\$413,465.62	\$275,643.75	\$19,914.45	\$1,323,210.99
700 <u>Property</u>				
752 Capital Equipment – Original and Additional				7,377.50
762 Capitalized Equipment - Replacement				29,603.00
766 Capitalized Technology Equipment – Replacement				82,946.75
Total Property				\$119,927.25
800 <u>Other Objects</u>				
810 Dues and Fees				2,361.08
Total Other Objects				\$2,361.08
Total 2620 Operation of Buildings Services	\$413,465.62	\$275,643.75	\$19,914.45	\$4,887,044.39

LEA : 123466403 Pottstown SD

Printed 6/26/2024 8:15:13 AM

General Fund (10)

2630 Care and Upkeep of Grounds Services	<u>Elementary</u>	<u>Secondary</u>	<u>Federal</u>	<u>Total</u>
100 <u>Personnel Services – Salaries</u>				
100 Personnel Services – Salaries				116,067.42
Total Personnel Services – Salaries				\$116,067.42
200 <u>Personnel Services – Employee Benefits</u>				
210 Group Insurance – Contracted Provider				27,432.77
220 Social Security Contributions				8,564.46
230 PSERS Retirement Contributions				41,098.09
Total Personnel Services – Employee Benefits				\$77,095.32
400 <u>Purchased Property Services</u>				
410 Cleaning Services				147,377.93
440 Rentals				2,292.62
Total Purchased Property Services				\$149,670.55
600 <u>Supplies</u>				
610 General Supplies	5,648.01	3,765.34		9,413.35
Total Supplies	\$5,648.01	\$3,765.34		\$9,413.35
Total 2630 Care and Upkeep of Grounds Services	\$5,648.01	\$3,765.34		\$352,246.64

LEA : 123466403 Pottstown SD

Printed 6/26/2024 8:15:13 AM

General Fund (10)

2640 Care and Upkeep of Equipment Services	<u>Elementary</u>	<u>Secondary</u>	<u>Federal</u>	<u>Total</u>
600 <u>Supplies</u>				
610 General Supplies	185.80	123.86		309.66
Total Supplies	\$185.80	\$123.86		\$309.66
Total 2640 Care and Upkeep of Equipment Services	\$185.80	\$123.86		\$309.66

LEA : 123466403 Pottstown SD

Printed 6/26/2024 8:15:13 AM

General Fund (10)

2650 Vehicle Operation and Maintenance Services (Other Than Student Transportation Vehicles)	<u>Elementary</u>	<u>Secondary</u>	<u>Federal</u>	<u>Total</u>
400 <u>Purchased Property Services</u>				
430 Repairs and Maintenance Services				10,552.09
Total Purchased Property Services				\$10,552.09
600 <u>Supplies</u>				
610 General Supplies	58.78	39.18		97.96
620 Energy				8,967.82
Total Supplies	\$58.78	\$39.18		\$9,065.78
700 <u>Property</u>				
752 Capital Equipment – Original and Additional				5,591.99
Total Property				\$5,591.99
Total 2650 Vehicle Operation and Maintenance Services (Other Than Student Transportation Vehicles)	\$58.78	\$39.18		\$25,209.86

LEA : 123466403 Pottstown SD

Printed 6/26/2024 8:15:13 AM

General Fund (10)

2660 Safety and Security Services	<u>Elementary</u>	<u>Secondary</u>	<u>Federal</u>	<u>Total</u>
100 <u>Personnel Services – Salaries</u>				
100 Personnel Services – Salaries				174,997.25
Total Personnel Services – Salaries				\$174,997.25
200 <u>Personnel Services – Employee Benefits</u>				
210 Group Insurance – Contracted Provider				29,793.34
220 Social Security Contributions				13,069.63
230 PSERS Retirement Contributions				57,676.74
Total Personnel Services – Employee Benefits				\$100,539.71
300 <u>Purchased Professional and Technical Services</u>				
329 Professional Educational Services – Other			30,777.13	30,777.13
350 Security / Safety Services				435,753.30
Total Purchased Professional and Technical Services			\$30,777.13	\$466,530.43
600 <u>Supplies</u>				
610 General Supplies	2,466.45	1,644.30		4,110.75
650 Supplies & Fees – Technology Related				2,875.00
Total Supplies	\$2,466.45	\$1,644.30		\$6,985.75
Total 2660 Safety and Security Services	\$2,466.45	\$1,644.30	\$30,777.13	\$749,053.14

LEA : 123466403 Pottstown SD

Printed 6/26/2024 8:15:13 AM

General Fund (10)

2700 Student Transportation Services	<u>Elementary</u>	<u>Secondary</u>	<u>Federal</u>	<u>Total</u>
300 <u>Purchased Professional and Technical Services</u>				
329 Professional Educational Services – Other				75,250.27
Total Purchased Professional and Technical Services				\$75,250.27
500 <u>Other Purchased Services</u>				
513 Contracted Carriers			280,113.88	2,386,251.96
516 Student Transportation Services From the IU				156,124.01
522 Automotive Liability Insurance				11,528.00
Total Other Purchased Services			\$280,113.88	\$2,553,903.97
600 <u>Supplies</u>				
650 Supplies & Fees – Technology Related				6,435.00
Total Supplies				\$6,435.00
Total 2700 Student Transportation Services			\$280,113.88	\$2,635,589.24

LEA : 123466403 Pottstown SD

Printed 6/26/2024 8:15:13 AM

General Fund (10)

2750 Nonpublic Transportation	<u>Elementary</u>	<u>Secondary</u>	<u>Federal</u>	<u>Total</u>
500 <u>Other Purchased Services</u>				
513 Contracted Carriers				121,867.48
Total Other Purchased Services				\$121,867.48
Total 2750 Nonpublic Transportation				\$121,867.48

LEA : 123466403 Pottstown SD

Printed 6/26/2024 8:15:13 AM

General Fund (10)

2790 Other Student Transportation Services	<u>Elementary</u>	<u>Secondary</u>	<u>Federal</u>	<u>Total</u>
300 <u>Purchased Professional and Technical Services</u>				
329 Professional Educational Services – Other				75,250.27
Total Purchased Professional and Technical Services				\$75,250.27
500 <u>Other Purchased Services</u>				
513 Contracted Carriers			280,113.88	2,264,384.48
516 Student Transportation Services From the IU				156,124.01
522 Automotive Liability Insurance				11,528.00
Total Other Purchased Services			\$280,113.88	\$2,432,036.49
600 <u>Supplies</u>				
650 Supplies & Fees – Technology Related				6,435.00
Total Supplies				\$6,435.00
Total 2790 Other Student Transportation Services			\$280,113.88	\$2,513,721.76

LEA : 123466403 Pottstown SD

Printed 6/26/2024 8:15:13 AM

General Fund (10)				
2800 Support Services – Central	<u>Elementary</u>	<u>Secondary</u>	<u>Federal</u>	<u>Total</u>
100 <u>Personnel Services – Salaries</u>				
100 Personnel Services – Salaries				304,616.83
Total Personnel Services – Salaries				\$304,616.83
200 <u>Personnel Services – Employee Benefits</u>				
210 Group Insurance – Contracted Provider				70,685.65
220 Social Security Contributions				24,123.47
230 PSERS Retirement Contributions				103,045.09
299 All Other Employee Benefits				10,438.90
Total Personnel Services – Employee Benefits				\$208,293.11
300 <u>Purchased Professional and Technical Services</u>				
322 Professional Educational Services – Ius				19,800.00
390 Other Purchased Professional and Technical Services				925.00
Total Purchased Professional and Technical Services				\$20,725.00
500 <u>Other Purchased Services</u>				
530 Communications				739.22
580 Travel				116.18
Total Other Purchased Services				\$855.40
600 <u>Supplies</u>				
650 Supplies & Fees – Technology Related			52,601.58	157,151.62
Total Supplies			\$52,601.58	\$157,151.62
800 <u>Other Objects</u>				
810 Dues and Fees				155.00
Total Other Objects				\$155.00
Total 2800 Support Services – Central			\$52,601.58	\$691,796.96

LEA : 123466403 Pottstown SD

Printed 6/26/2024 8:15:13 AM

General Fund (10)

2830 Staff Services

	<u>Elementary</u>	<u>Secondary</u>	<u>Federal</u>	<u>Total</u>
100 <u>Personnel Services – Salaries</u>				
100 Personnel Services – Salaries				212,743.42
Total Personnel Services – Salaries				\$212,743.42
200 <u>Personnel Services – Employee Benefits</u>				
210 Group Insurance – Contracted Provider				40,613.69
220 Social Security Contributions				15,800.48
230 PSERS Retirement Contributions				75,114.32
299 All Other Employee Benefits				510.00
Total Personnel Services – Employee Benefits				\$132,038.49
500 <u>Other Purchased Services</u>				
530 Communications				739.22
Total Other Purchased Services				\$739.22
Total 2830 Staff Services				\$345,521.13

LEA : 123466403 Pottstown SD

Printed 6/26/2024 8:15:13 AM

General Fund (10)

2831 Supervision of Staff Services	<u>Elementary</u>	<u>Secondary</u>	<u>Federal</u>	<u>Total</u>
100 <u>Personnel Services – Salaries</u>				
100 Personnel Services – Salaries				212,743.42
Total Personnel Services – Salaries				\$212,743.42
200 <u>Personnel Services – Employee Benefits</u>				
210 Group Insurance – Contracted Provider				40,613.69
220 Social Security Contributions				15,800.48
230 PSERS Retirement Contributions				75,114.32
299 All Other Employee Benefits				510.00
Total Personnel Services – Employee Benefits				\$132,038.49
500 <u>Other Purchased Services</u>				
530 Communications				739.22
Total Other Purchased Services				\$739.22
Total 2831 Supervision of Staff Services				\$345,521.13

LEA : 123466403 Pottstown SD

Printed 6/26/2024 8:15:13 AM

General Fund (10)				
2840 Data Processing Services				
	<u>Elementary</u>	<u>Secondary</u>	<u>Federal</u>	<u>Total</u>
100 <u>Personnel Services – Salaries</u>				
100 Personnel Services – Salaries				91,873.41
Total Personnel Services – Salaries				\$91,873.41
200 <u>Personnel Services – Employee Benefits</u>				
210 Group Insurance – Contracted Provider				30,071.96
220 Social Security Contributions				8,322.99
230 PSERS Retirement Contributions				27,930.77
299 All Other Employee Benefits				9,928.90
Total Personnel Services – Employee Benefits				\$76,254.62
300 <u>Purchased Professional and Technical Services</u>				
322 Professional Educational Services – Ius				19,800.00
390 Other Purchased Professional and Technical Services				925.00
Total Purchased Professional and Technical Services				\$20,725.00
500 <u>Other Purchased Services</u>				
580 Travel				116.18
Total Other Purchased Services				\$116.18
600 <u>Supplies</u>				
650 Supplies & Fees – Technology Related			52,601.58	157,151.62
Total Supplies			\$52,601.58	\$157,151.62
800 <u>Other Objects</u>				
810 Dues and Fees				155.00
Total Other Objects				\$155.00
Total 2840 Data Processing Services			\$52,601.58	\$346,275.83

LEA : 123466403 Pottstown SD

Printed 6/26/2024 8:15:13 AM

General Fund (10)				
2900 Other Support Services	<u>Elementary</u>	<u>Secondary</u>	<u>Federal</u>	<u>Total</u>
500 <u>Other Purchased Services</u>				
595 IU Payments By Withholding				15,945.11
Total Other Purchased Services				\$15,945.11
Total 2900 Other Support Services				\$15,945.11

LEA : 123466403 Pottstown SD

Printed 6/26/2024 8:15:13 AM

General Fund (10)

2910 Support Services Not Listed Elsewhere In the 2000 Series

Elementary Secondary Federal Total

500 <u>Other Purchased Services</u>				
595 IU Payments By Withholding				15,945.11
Total Other Purchased Services				\$15,945.11
Total 2910 Support Services Not Listed Elsewhere In the 2000 Series				\$15,945.11

LEA : 123466403 Pottstown SD

Printed 6/26/2024 8:15:26 AM

General Fund (10)	
3000 Operation of Non-Instructional Services	<u>Total</u>
100 <u>Personnel Services – Salaries</u>	
100 Personnel Services – Salaries	617,461.96
Total Personnel Services – Salaries	\$617,461.96
200 <u>Personnel Services – Employee Benefits</u>	
210 Group Insurance – Contracted Provider	27,605.71
220 Social Security Contributions	48,272.42
230 PSERS Retirement Contributions	215,435.33
299 All Other Employee Benefits	720.00
Total Personnel Services – Employee Benefits	\$292,033.46
300 <u>Purchased Professional and Technical Services</u>	
330 Other Professional Services	118,183.99
350 Security / Safety Services	18,362.50
390 Other Purchased Professional and Technical Services	24,545.00
Total Purchased Professional and Technical Services	\$161,091.49
400 <u>Purchased Property Services</u>	
440 Rentals	681.53
Total Purchased Property Services	\$681.53
500 <u>Other Purchased Services</u>	
510 Student Transportation Services	81,568.50
520 Insurance – General	2,990.00
530 Communications	649.21
580 Travel	4,487.40
Total Other Purchased Services	\$89,695.11
600 <u>Supplies</u>	
610 General Supplies	209,795.72
650 Supplies & Fees – Technology Related	910.90
Total Supplies	\$210,706.62
700 <u>Property</u>	
752 Capital Equipment – Original and Additional	72,108.07
Total Property	\$72,108.07
800 <u>Other Objects</u>	
810 Dues and Fees	19,223.85
860 Grants To Municipal and Community Service Organizations	30,000.00
890 Miscellaneous Expenditures	164.85
Total Other Objects	\$49,388.70
Total 3000 Operation of Non-Instructional Services	\$1,493,166.94

LEA : 123466403 Pottstown SD

Printed 6/26/2024 8:15:26 AM

General Fund (10)

3200 Student Activities

	<u>Elementary</u>	<u>Secondary</u>	<u>Federal</u>	<u>Total</u>
100 <u>Personnel Services – Salaries</u>				
100 Personnel Services – Salaries				615,531.96
Total Personnel Services – Salaries				\$615,531.96
200 <u>Personnel Services – Employee Benefits</u>				
210 Group Insurance – Contracted Provider				27,605.71
220 Social Security Contributions				47,957.22
230 PSERS Retirement Contributions				214,756.57
299 All Other Employee Benefits				720.00
Total Personnel Services – Employee Benefits				\$291,039.50
300 <u>Purchased Professional and Technical Services</u>				
330 Other Professional Services				59,489.99
350 Security / Safety Services				18,362.50
390 Other Purchased Professional and Technical Services				24,545.00
Total Purchased Professional and Technical Services				\$102,397.49
400 <u>Purchased Property Services</u>				
440 Rentals				681.53
Total Purchased Property Services				\$681.53
500 <u>Other Purchased Services</u>				
510 Student Transportation Services				81,568.50
520 Insurance – General				2,990.00
530 Communications				649.21
580 Travel				4,487.40
Total Other Purchased Services				\$89,695.11
600 <u>Supplies</u>				
610 General Supplies			10,336.69	199,556.08
650 Supplies & Fees – Technology Related			910.90	910.90
Total Supplies			\$11,247.59	\$200,466.98
700 <u>Property</u>				
752 Capital Equipment – Original and Additional				72,108.07
Total Property				\$72,108.07
800 <u>Other Objects</u>				
810 Dues and Fees				19,223.85
Total Other Objects				\$19,223.85
Total 3200 Student Activities			\$11,247.59	\$1,391,144.49

LEA : 123466403 Pottstown SD

Printed 6/26/2024 8:15:26 AM

General Fund (10)

3300 Community Services	<u>Elementary</u>	<u>Secondary</u>	<u>Federal</u>	<u>Total</u>
100 <u>Personnel Services – Salaries</u>				
100 Personnel Services – Salaries				1,930.00
Total Personnel Services – Salaries				\$1,930.00
200 <u>Personnel Services – Employee Benefits</u>				
220 Social Security Contributions				315.20
230 PSERS Retirement Contributions				678.76
Total Personnel Services – Employee Benefits				\$993.96
300 <u>Purchased Professional and Technical Services</u>				
330 Other Professional Services			58,694.00	58,694.00
Total Purchased Professional and Technical Services			\$58,694.00	\$58,694.00
600 <u>Supplies</u>				
610 General Supplies			10,239.64	10,239.64
Total Supplies			\$10,239.64	\$10,239.64
800 <u>Other Objects</u>				
860 Grants To Municipal and Community Service Organizations				30,000.00
890 Miscellaneous Expenditures				164.85
Total Other Objects				\$30,164.85
Total 3300 Community Services			\$68,933.64	\$102,022.45

LEA : 123466403 Pottstown SD

Printed 6/26/2024 8:15:37 AM

General Fund (10)

4000 Facilities Acquisition, Construction and Improvement Services		<u>Total</u>
400 <u>Purchased Property Services</u>		
450 Construction Services		585,618.47
Total Purchased Property Services		\$585,618.47
600 <u>Supplies</u>		
610 General Supplies		85.34
Total Supplies		\$85.34
700 <u>Property</u>		
752 Capital Equipment – Original and Additional		847,972.60
Total Property		\$847,972.60
Total 4000 Facilities Acquisition, Construction and Improvement Services		\$1,433,676.41

LEA : 123466403 Pottstown SD

Printed 6/26/2024 8:15:37 AM

General Fund (10)

4500 Building Acquisition and Construction Services – Original and Additional	<u>Elementary</u>	<u>Secondary</u>	<u>Federal</u>	<u>Total</u>
600 <u>Supplies</u>				
610 General Supplies			85.34	85.34
Total Supplies			\$85.34	\$85.34
Total 4500 Building Acquisition and Construction Services – Original and Additional			\$85.34	\$85.34

LEA : 123466403 Pottstown SD

Printed 6/26/2024 8:15:37 AM

General Fund (10)

4600 Existing Building Improvement Services	<u>Elementary</u>	<u>Secondary</u>	<u>Federal</u>	<u>Total</u>
400 <u>Purchased Property Services</u>				
450 Construction Services				585,618.47
Total Purchased Property Services				\$585,618.47
700 <u>Property</u>				
752 Capital Equipment – Original and Additional			465,438.41	847,972.60
Total Property			\$465,438.41	\$847,972.60
Total 4600 Existing Building Improvement Services			\$465,438.41	\$1,433,591.07

LEA : 123466403 Pottstown SD

Printed 6/26/2024 8:15:47 AM

General Fund (10)

5000 Other Expenditures and Financing Uses

Total

800 Other Objects

830 Interest	1,084,249.44
880 Refunds of Prior Years' Receipts	248.52

Total Other Objects	\$1,084,497.96
---------------------	----------------

900 Other Uses of Funds

910 Redemption of Principal	2,679,903.76
-----------------------------	--------------

Total Other Uses of Funds	\$2,679,903.76
---------------------------	----------------

Total 5000 Other Expenditures and Financing Uses	\$3,764,401.72
--	----------------

LEA : 123466403 Pottstown SD

Printed 6/26/2024 8:15:47 AM

General Fund (10)

5100 Debt Service / Other Expenditures and Financing Uses	<u>Elementary</u>	<u>Secondary</u>	<u>Federal</u>	<u>Total</u>
800 <u>Other Objects</u>				
830 Interest				1,084,249.44
880 Refunds of Prior Years' Receipts				248.52
Total Other Objects				\$1,084,497.96
900 <u>Other Uses of Funds</u>				
910 Redemption of Principal				2,679,903.76
Total Other Uses of Funds				\$2,679,903.76
Total 5100 Debt Service / Other Expenditures and Financing Uses				\$3,764,401.72

LEA : 123466403 Pottstown SD

Printed 6/26/2024 8:15:47 AM

General Fund (10)

5110 Debt Service	<u>Elementary</u>	<u>Secondary</u>	<u>Federal</u>	<u>Total</u>
800 <u>Other Objects</u>				
830 Interest				1,080,716.26
Total Other Objects				\$1,080,716.26
900 <u>Other Uses of Funds</u>				
910 Redemption of Principal				2,595,000.00
Total Other Uses of Funds				\$2,595,000.00
Total 5110 Debt Service				\$3,675,716.26

LEA : 123466403 Pottstown SD

Printed 6/26/2024 8:15:47 AM

General Fund (10)

5130 Refund of Prior Year Revenues / Receipts	<u>Elementary</u>	<u>Secondary</u>	<u>Federal</u>	<u>Total</u>
800 <u>Other Objects</u>				
880 Refunds of Prior Years' Receipts				248.52
Total Other Objects				\$248.52
Total 5130 Refund of Prior Year Revenues / Receipts				\$248.52

LEA : 123466403 Pottstown SD

Printed 6/26/2024 8:15:47 AM

General Fund (10)

5140 Leases and Other Right-to-Use Arrangements	<u>Elementary</u>	<u>Secondary</u>	<u>Federal</u>	<u>Total</u>
800 <u>Other Objects</u>				
830 Interest				3,533.18
Total Other Objects				\$3,533.18
900 <u>Other Uses of Funds</u>				
910 Redemption of Principal				84,903.76
Total Other Uses of Funds				\$84,903.76
Total 5140 Leases and Other Right-to-Use Arrangements				\$88,436.94

LEA : 123466403 Pottstown SD

Printed 6/26/2024 8:15:31 AM

Athletic / School-Sponsored Extra Curricular Activities Fund (29)

3000 Operation of Non-Instructional Services	<u>Total</u>
300 <u>Purchased Professional and Technical Services</u>	
390 Other Purchased Professional and Technical Services	40,069.86
Total Purchased Professional and Technical Services	\$40,069.86
Total 3000 Operation of Non-Instructional Services	\$40,069.86

LEA : 123466403 Pottstown SD

Printed 6/26/2024 8:15:31 AM

Athletic / School-Sponsored Extra Curricular Activities Fund (29)

3200 Student Activities	<u>Elementary</u>	<u>Secondary</u>	<u>Federal</u>	<u>Total</u>
300 <u>Purchased Professional and Technical Services</u>				
390 Other Purchased Professional and Technical Services				40,069.86
Total Purchased Professional and Technical Services				\$40,069.86
Total 3200 Student Activities				\$40,069.86

LEA : 123466403 Pottstown SD

Printed 6/26/2024 8:15:58 AM

	<u>General Fund(10)</u>	<u>Student Sponsored Activity Fund(21)</u>	<u>Public Purpose Trust(27)</u>	<u>Other Compt Approved (28)</u>	<u>Athletic / Activity(29)</u>
1000 <u>Instruction</u>					
1100 Regular Programs - Elementary / Secondary	26,841,931.68				
1200 Special Programs - Elementary / Secondary	16,368,213.21				
1300 Vocational Education	1,380,883.28				
1400 Other Instructional Programs - Elementary / Secondary	1,526,413.59				
1500 Nonpublic School Programs	10,455.51				
1800 Pre-Kindergarten	3,125,521.97				
Total Instruction	\$49,253,419.24				
2000 <u>Support Services</u>					
2100 Support Services - Students	4,560,131.61				
2200 Support Services - Instructional Staff	2,956,638.00				
2300 Support Services - Administration	4,294,432.89				
2400 Support Services - Pupil Health	1,504,031.04				
2500 Support Services - Business	1,107,929.82				
2600 Operation and Maintenance of Plant Services	6,299,209.74				
2700 Student Transportation Services	2,635,589.24				
2800 Support Services - Central	691,796.96				
2900 Other Support Services	15,945.11				
Total Support Services	\$24,065,704.41				
3000 <u>Operation of Non-Instructional Services</u>					
3200 Student Activities	1,391,144.49				40,069.86
3300 Community Services	102,022.45				
Total Operation of Non-Instructional Services	\$1,493,166.94				\$40,069.86
4000 <u>Facilities Acquisition, Construction and Improvement Services</u>					
4500 Building Acquisition and Construction Services - Original and Additional	85.34				
4600 Existing Building Improvement Services	1,433,591.07				
Total Facilities Acquisition, Construction and Improvement Services	\$1,433,676.41				
5000 <u>Other Expenditures and Financing Uses</u>					
5100 Debt Service / Other Expenditures and Financing Uses	3,764,401.72				
Total Other Expenditures and Financing Uses	\$3,764,401.72				
TOTAL ACTUAL EXPENDITURES & OTHER FINANCING USES	\$80,010,368.72				\$40,069.86

LEA : 123466403 Pottstown SD

Printed 6/26/2024 8:15:58 AM

	<u>Capital Reserve (690.</u>	<u>Capital Reserve (1431)(32)</u>	<u>Other Capital Projects</u>	<u>Debt Service(40)</u>	<u>Permanent(90)</u>
	<u>1850)(31)</u>		<u>Fund(39)</u>		
1000 <u>Instruction</u>					
1100 Regular Programs - Elementary / Secondary					
1200 Special Programs - Elementary / Secondary					
1300 Vocational Education					
1400 Other Instructional Programs - Elementary / Secondary					
1500 Nonpublic School Programs					
1800 Pre-Kindergarten					
Total Instruction					
2000 <u>Support Services</u>					
2100 Support Services - Students					
2200 Support Services - Instructional Staff					
2300 Support Services - Administration					
2400 Support Services - Pupil Health					
2500 Support Services - Business					
2600 Operation and Maintenance of Plant Services					
2700 Student Transportation Services					
2800 Support Services - Central					
2900 Other Support Services					
Total Support Services					
3000 <u>Operation of Non-Instructional Services</u>					
3200 Student Activities					
3300 Community Services					
Total Operation of Non-Instructional Services					
4000 <u>Facilities Acquisition, Construction and Improvement Services</u>					
4500 Building Acquisition and Construction Services - Original and Additional					
4600 Existing Building Improvement Services					
Total Facilities Acquisition, Construction and Improvement Services					
5000 <u>Other Expenditures and Financing Uses</u>					
5100 Debt Service / Other Expenditures and Financing Uses					
Total Other Expenditures and Financing Uses					
TOTAL ACTUAL EXPENDITURES & OTHER FINANCING USES					

	<u>Total</u>
1000 <u>Instruction</u>	
1100 Regular Programs - Elementary / Secondary	26,841,931.68
1200 Special Programs - Elementary / Secondary	16,368,213.21
1300 Vocational Education	1,380,883.28
1400 Other Instructional Programs - Elementary / Secondary	1,526,413.59
1500 Nonpublic School Programs	10,455.51
1800 Pre-Kindergarten	3,125,521.97
Total Instruction	\$49,253,419.24
2000 <u>Support Services</u>	
2100 Support Services - Students	4,560,131.61
2200 Support Services - Instructional Staff	2,956,638.00
2300 Support Services - Administration	4,294,432.89
2400 Support Services - Pupil Health	1,504,031.04
2500 Support Services - Business	1,107,929.82
2600 Operation and Maintenance of Plant Services	6,299,209.74
2700 Student Transportation Services	2,635,589.24
2800 Support Services - Central	691,796.96
2900 Other Support Services	15,945.11
Total Support Services	\$24,065,704.41
3000 <u>Operation of Non-Instructional Services</u>	
3200 Student Activities	1,431,214.35
3300 Community Services	102,022.45
Total Operation of Non-Instructional Services	\$1,533,236.80
4000 <u>Facilities Acquisition, Construction and Improvement Services</u>	
4500 Building Acquisition and Construction Services - Original and Additional	85.34
4600 Existing Building Improvement Services	1,433,591.07
Total Facilities Acquisition, Construction and Improvement Services	\$1,433,676.41
5000 <u>Other Expenditures and Financing Uses</u>	
5100 Debt Service / Other Expenditures and Financing Uses	3,764,401.72
Total Other Expenditures and Financing Uses	\$3,764,401.72
TOTAL ACTUAL EXPENDITURES & OTHER FINANCING USES	\$80,050,438.58

LEA : 123466403 Pottstown SD

Printed 6/26/2024 8:16:09 AM

PSERS Salary Data (Salary Data should relate to the General Fund only)

Amount	Description	Amount
	Total Salary Base for salaries subject to PSERS withholding	27,956,990.41
	Total Federally Funded salaries subject to PSERS withholding	4,427,868.63

Title I Expenditure Data

Amount	Description	Amount
	Expenditures Funded with Current Title I Funds	1,406,463.00
	Expenditures Funded with Carry over Title I Funds	
Total	Title I Expenditure Data	\$1,406,463.00

Title IV Revenue Data

Amount	Description	Amount
	Revenue from Title IV-A-1: Student Support and Academic Enrichment Grants	112,837.00
	Revenue from Title IV-B: 21st Century Community Learning Centers	389,697.00

Title V Revenue Data

Amount	Description	Amount
	Revenue from Title V-B-2: Rural and Low-Income School Programs	
	Revenue from Title V-B-1: Small Rural School Achievement (Directly from the Federal Govt)	

1 .	<u>Current Special Education Expenditures within Function 1000</u> See list of exclusions in the note below.	16,216,020.16
2 .	<u>Current Special Education Expenditures within Function 2000</u> See list of exclusions in the note below.	159,048.60
2A.	<u>Current Special Education Expenditures within Sub-Function 2100</u> This data should also be included in line 2 above. See list of exclusions in the note below.	
2B.	<u>Current Special Education Expenditures within Sub-Function 2200</u> This data should also be included in line 2 above. See list of exclusions in the note below.	
2C.	<u>Current Special Education Expenditures within Sub-Function 2700</u> This data should also be included in line 2 above. See list of exclusions in the note below.	159,048.60
3.	<u>Current Special Education Expenditures within Sub-Function 3100</u> See list of exclusions in the note below.	
4.	<u>Current Special Education Expenditures within Sub-Function 3200</u> See list of exclusions in the note below.	

Note: The Current Special Education Expenditure amounts for each line should be calculated as follows:

- * Include the total expenditures for special education costs from all governmental funds and the food service fund 51 for the function/sub-function requested
- * Exclude data from sub-functions: 1243,1450,1500,1600,1807,2280,2450,2750,2990
- * Exclude data from objects: 322,511,512,516,561,562,564,566,592,593,594,595,596,597,700,830,899

Benefits for Staff Relative to Collective Bargaining Agreements

	OBJECT	COVERED	NOT COVERED	TOTAL
10 General Fund				
	211 Medical Insurance			
	212 Dental Insurance	121,099.68	183,160.68	304,260.36
	215 Eye Care Insurance	4,302.16	22,952.72	27,254.88
	216 Prescription Insurance			
	271 Self-Insurance Medical Benefits	2,625,159.39	1,310,225.20	3,935,384.59
	272 Self-Insurance Dental Benefits			
	275 Self-Insurance Eye Care Benefits			
	276 Self-Insurance Prescription Benefits	574,771.74	500,899.47	1,075,671.21
	FUND TOTAL	\$3,325,332.97	\$2,017,238.07	\$5,342,571.04
50 Enterprise Fund				
	211 Medical Insurance			
	212 Dental Insurance		13,884.41	13,884.41
	215 Eye Care Insurance		948.20	948.20
	216 Prescription Insurance			
	271 Self-Insurance Medical Benefits		113,805.96	113,805.96
	272 Self-Insurance Dental Benefits			
	275 Self-Insurance Eye Care Benefits			
	276 Self-Insurance Prescription Benefits		32,273.45	32,273.45
	FUND TOTAL		\$160,912.02	\$160,912.02
60 Internal Service Fund	No Self Insurance data to report			
	211 Medical Insurance			
	212 Dental Insurance			
	215 Eye Care Insurance			
	216 Prescription Insurance			
	271 Self-Insurance Medical Benefits			
	272 Self-Insurance Dental Benefits			
	275 Self-Insurance Eye Care Benefits			
	276 Self-Insurance Prescription Benefits			
	FUND TOTAL			
Total of All Funds		\$3,325,332.97	\$2,178,150.09	\$5,503,483.06

LEA : 123466403 Pottstown SD

Function	Special Education (Prior Year)	Nonspecial Education (Prior Year)	Total (Prior Year)	Special Education (Current Year)	Nonspecial Education (Current Year)	Total (Current Year)
2120 Guidance Services		813,520.92	813,520.92		1,592,742.75	1,592,742.75
2140 Psychological Services	1,008,902.93	252,225.73	1,261,128.66	847,140.31	211,785.08	1,058,925.39
2150 Speech Pathology and Audiology Services	694,941.53		694,941.53	783,415.77		783,415.77
2160 Social Work Services	100,374.80	66,916.53	167,291.33	251,586.68	167,724.43	419,311.11
2260 Instruction and Curriculum Development Services		539,456.70	539,456.70		486,287.81	486,287.81
2350 Legal and Accounting Services		2,760.00	2,760.00		4,082.00	4,082.00
2420 Medical Services	765,929.96	7,551.27	773,481.23	694,695.82	6,848.97	701,544.79
2440 Nursing Services		561,974.83	561,974.83		800,346.58	800,346.58
2700 Student Transportation Services	1,527,892.53	603,428.92	2,131,321.45	1,802,026.02	711,695.74	2,513,721.76
Total	\$4,098,041.75	\$2,847,834.90	\$6,945,876.65	\$4,378,864.60	\$3,981,513.36	\$8,360,377.96

LEA : 123466403 Pottstown SD

Printed 6/26/2024 8:16:16 AM

(PRINCIPAL AMOUNTS ONLY)								
<u>GOVERNMENTAL FUNDS/ ACTIVITIES</u>	Short-Term Borrowing	General Obligation Bonds/Notes	Authority Building Obligations	Leases, Other Right to Use Arrangements	Extended Term Financing Agreements	Other Long Term Debt/Liabilities	OPEB, Comp Abs, Net Pension Liab	Total
1. Debt at Beginning of Fiscal Year		40,040,000.00		99,358.00			79,221,878.00	119,361,236.00
2. Additional Debt Incurred During Year							19,552,127.00	19,552,127.00
3. Retirements and Repayments		2,595,000.00		84,904.00			12,692,314.00	15,372,218.00
4. Debt at End of Fiscal Year		37,445,000.00		14,454.00			86,081,691.00	123,541,145.00
5. Accreted Interest at End Of Fiscal Year								
6. Total Debt and Accreted Interest		37,445,000.00		14,454.00			86,081,691.00	123,541,145.00
7. Current Portion P&I - Due within 1 year		3,673,388.76		14,454.00				3,687,842.76
8. Interest Paid during current fiscal year		1,080,992.00						1,080,992.00

(PRINCIPAL AMOUNTS ONLY)								
<u>PROPRIETARY FUNDS</u>	Short-Term Borrowing	General Obligation Bonds/Notes	Authority Building Obligations	Leases, Other Right to Use Arrangements	Extended Term Financing Agreements	Other Long Term Debt/Liabilities	OPEB, Comp Abs, Net Pension Liab	Total
1. Debt at Beginning of Fiscal Year							1,091,424.00	1,091,424.00
2. Additional Debt Incurred During Year							1,030,956.00	1,030,956.00
3. Retirements and Repayments							295,085.00	295,085.00
4. Debt at End of Fiscal Year							1,827,295.00	1,827,295.00
5. Accreted Interest at End Of Fiscal Year								
6. Total Debt and Accreted Interest							1,827,295.00	1,827,295.00
7. Current Portion P&I - Due within 1 year								
8. Interest Paid during current fiscal year								

LEA : 123466403 Pottstown SD

Total Principal and Interest Payments Made by Your School - All Funds

Function	Fund		Principal (910)	Principal (920)	Interest (830)	Total (Principal +Interest)	Misc Other Uses (990)
5110	10	General Fund	2,595,000.00		1,080,716.26	3,675,716.26	
5110	20	Special Revenue Funds					
5110	30	Capital Projects Funds					
5110	40	Debt Service Fund					
5110	90	Permanent Fund					
5120	10	General Fund					
5120	20	Special Revenue Funds					
5120	30	Capital Projects Funds					
5120	40	Debt Service Fund					
5140	10	General Fund	84,903.76		3,533.18	88,436.94	
5140	20	Special Revenue Funds					
5140	30	Capital Projects Funds					
5140	40	Debt Service Fund					
5140	90	Permanent Fund					
Total Debt Payments - Governmental Funds			\$2,679,903.76		\$1,084,249.44	\$3,764,153.20	

Function	Fund		Principal (910)	Principal (920)	Interest (830)	Total (Principal +Interest)
5110	50	Enterprise Fund				
5110	60	Internal Service Fund				
5120	50	Enterprise Fund				
5120	60	Internal Service Fund				
5140	50	Enterprise Fund				
5140	60	Internal Service Fund				
Total Debt Payments - Proprietary Funds						

LEA : 123466403 Pottstown SD

Debt Details
Governmental Funds/ Activities

Debt Category	Debt Issue Date (MM/YYYY)	Principal Amounts Only				Current Portion Due Within One Year (Principal and Interest)	Interest Paid During Fiscal Year
		Debt at Beginning of Fiscal Year	Additions	Reductions / Repayments	Debt at End of Fiscal Year		
General Obligation Bonds/Notes – CIB	10/2021	9,565,000.00		55,000.00	9,510,000.00	233,725.00	184,275.00
General Obligation Bonds/Notes – CIB	06/2020	7,305,000.00		1,550,000.00	5,755,000.00	1,805,200.00	272,200.00
General Obligation Bonds/Notes – CIB	11/2019	9,645,000.00		10,000.00	9,635,000.00	233,840.00	223,993.00
General Obligation Bonds/Notes – CIB	03/2019	6,980,000.00		25,000.00	6,955,000.00	246,623.76	222,124.00
General Obligation Bonds/Notes – CIB	12/2018	6,545,000.00		955,000.00	5,590,000.00	1,154,000.00	178,400.00
Leases and Other Right to Use Arrangements		99,358.00		84,904.00	14,454.00	14,454.00	
Compensated Absences		551,829.00	534,978.00	549,234.00	537,573.00		
Net Pension Liability		69,581,138.00	19,017,149.00	8,950,245.00	79,648,042.00		
Other Post-Employment Benefits (OPEB)		9,088,911.00		3,192,835.00	5,896,076.00		
Totals for Debt Entered:		\$119,361,236.00	\$19,552,127.00	\$15,372,218.00	\$123,541,145.00	\$3,687,842.76	\$1,080,992.00

Bond Details
Proprietary Funds

Debt Category	Debt Issue Date (MM/YYYY)	Principal Amounts Only				Current Portion Due Within One Year (Principal and Interest)	Interest Paid During Fiscal Year
		Debt at Beginning of Fiscal Year	Additions	Reductions / Repayments	Debt at End of Fiscal Year		
Compensated Absences		24,578.00	7,340.00	10,003.00	21,915.00		
Net Pension Liability		830,862.00	1,023,616.00	187,520.00	1,666,958.00		
Other Post-Employment Benefits (OPEB)		235,984.00		97,562.00	138,422.00		
Totals for Debt Entered:		\$1,091,424.00	\$1,030,956.00	\$295,085.00	\$1,827,295.00		

LEA : 123466403 Pottstown SD

Printed 6/26/2024 8:16:18 AM

General Fund (10)

Section 1: Tuition/Purchased Services as Reported within Expenditure Detail	Amount
Tuition Reported in General Fund Expenditures 1000-560	7,493,977.46
Purchased Services in General Fund Expenditures 1000-594 and 1000-597	6,852.46
Section 1 Total	\$7,500,829.92

Section 2: Tuition Paid to Institution Types During Fiscal Year	Tuition Paid For Nonspecial Education	Tuition Paid For Special Education	Total
1 1306 Institutions			
2 Institutionalized Children's Programs			
3 Juveniles Incarcerated in Adult Facilities			
4 Residential Treatment Facilities			
5 Other Local Education Agencies		6,852.46	6,852.46
6 Brick and Mortar Charter Schools	741,211.82	801,299.24	1,542,511.06
7 Cyber Charter Schools	1,728,570.82	1,874,721.22	3,603,292.04
8 Career and Technology Centers	150,080.50		150,080.50
9 Approved Private Schools		10,184.95	10,184.95
10 PA Chartered Schools for the Deaf and Blind			
11 Private Residential Rehabilitative Institutions		49,250.27	49,250.27
12 Juvenile Detention Centers			
13 Special Program Jointures			
14 Other Tuition Not Included Elsewhere In This Section		2,138,658.64	2,138,658.64
Section 2 Total	\$2,619,863.14	\$4,880,966.78	\$7,500,829.92

1 .	<u>Student Transportation Services for Educational Field Trips</u>	
2 .	<u>Student Transportation Services for Student Activities</u>	81,568.50
3 .	<u>Rental of Vehicles for Student Transportation Services</u>	
4 .	<u>Capital Reserve Funds</u>	

Include only district-owned transportation expenditures paid from State or local money.
DO NOT include federal expenditures or payments to contract service providers.
Contracted transportation services should not be recorded on this schedule.

LEA : 123466403 Pottstown SD

Printed 6/26/2024 8:16:33 AM

Food Service / Cafeteria Operations Fund (51)

3000 Operation of Non-Instructional Services		<u>Total</u>
100 <u>Personnel Services – Salaries</u>		
100 Personnel Services – Salaries	597,720.66	
Total Personnel Services – Salaries	\$597,720.66	
200 <u>Personnel Services – Employee Benefits</u>		
210 Group Insurance – Contracted Provider	163,174.68	
220 Social Security Contributions	43,659.63	
230 PSERS Retirement Contributions	128,503.92	
280 Other Post-Employment Benefits (OPEB)	(48,180.00)	
299 All Other Employee Benefits	1,560.00	
Total Personnel Services – Employee Benefits	\$288,718.23	
300 <u>Purchased Professional and Technical Services</u>		
390 Other Purchased Professional and Technical Services	955.00	
Total Purchased Professional and Technical Services	\$955.00	
400 <u>Purchased Property Services</u>		
410 Cleaning Services	4,696.84	
430 Repairs and Maintenance Services	3,657.02	
490 Other Purchased Property Services	4,638.47	
Total Purchased Property Services	\$12,992.33	
500 <u>Other Purchased Services</u>		
530 Communications	1,551.18	
570 Food Service Management	22,097.57	
580 Travel	192.61	
Total Other Purchased Services	\$23,841.36	
600 <u>Supplies</u>		
610 General Supplies	82,159.21	
630 Food	1,226,052.32	
640 Books and Periodicals	7,925.00	
650 Supplies & Fees – Technology Related	2,520.00	
Total Supplies	\$1,318,656.53	
700 <u>Property</u>		
740 Depreciation	28,816.35	
Total Property	\$28,816.35	
800 <u>Other Objects</u>		
800 Other Objects	2,785.00	
810 Dues and Fees	1,512.97	
890 Miscellaneous Expenditures	5.97	
Total Other Objects	\$4,303.94	
900 <u>Other Uses of Funds</u>		
900 Other Uses of Funds	56,489.49	
Total Other Uses of Funds	\$56,489.49	
Total 3000 Operation of Non-Instructional Services	\$2,332,493.89	

LEA : 123466403 Pottstown SD

Printed 6/26/2024 8:16:33 AM

Food Service / Cafeteria Operations Fund (51)

3100 Food Services	Elementary	Secondary	Federal	Total
100 <u>Personnel Services – Salaries</u>				
100 Personnel Services – Salaries				597,720.66
Total Personnel Services – Salaries				\$597,720.66
200 <u>Personnel Services – Employee Benefits</u>				
210 Group Insurance – Contracted Provider				163,174.68
220 Social Security Contributions				43,659.63
230 PSERS Retirement Contributions				128,503.92
280 Other Post-Employment Benefits (OPEB)				(48,180.00)
299 All Other Employee Benefits				1,560.00
Total Personnel Services – Employee Benefits				\$288,718.23
300 <u>Purchased Professional and Technical Services</u>				
390 Other Purchased Professional and Technical Services				955.00
Total Purchased Professional and Technical Services				\$955.00
400 <u>Purchased Property Services</u>				
410 Cleaning Services				4,696.84
430 Repairs and Maintenance Services				3,657.02
490 Other Purchased Property Services				4,638.47
Total Purchased Property Services				\$12,992.33
500 <u>Other Purchased Services</u>				
530 Communications				1,551.18
570 Food Service Management				22,097.57
580 Travel				192.61
Total Other Purchased Services				\$23,841.36
600 <u>Supplies</u>				
610 General Supplies				82,159.21
630 Food				1,226,052.32
640 Books and Periodicals				7,925.00
650 Supplies & Fees – Technology Related				2,520.00
Total Supplies				\$1,318,656.53
700 <u>Property</u>				
740 Depreciation				28,816.35
Total Property				\$28,816.35
800 <u>Other Objects</u>				
800 Other Objects				2,785.00
810 Dues and Fees				1,512.97
890 Miscellaneous Expenditures				5.97
Total Other Objects				\$4,303.94
900 <u>Other Uses of Funds</u>				
900 Other Uses of Funds				56,489.49
Total Other Uses of Funds				\$56,489.49
Total 3100 Food Services				\$2,332,493.89

LEA : 123466403 Pottstown SD

Printed 6/26/2024 8:16:30 AM

Internal Service Fund (60)

2000 Support Services

Total

200 Personnel Services – Employee Benefits

210 Group Insurance – Contracted Provider	6,824,102.00
---	--------------

Total Personnel Services – Employee Benefits	\$6,824,102.00
--	----------------

800 Other Objects

810 Dues and Fees	265,571.00
-------------------	------------

Total Other Objects	\$265,571.00
---------------------	--------------

Total 2000 Support Services	\$7,089,673.00
-----------------------------	----------------

LEA : 123466403 Pottstown SD

Printed 6/26/2024 8:16:30 AM

Internal Service Fund (60)

2300 Support Services – Administration	<u>Elementary</u>	<u>Secondary</u>	<u>Federal</u>	<u>Total</u>
200 <u>Personnel Services – Employee Benefits</u>				
210 Group Insurance – Contracted Provider				6,824,102.00
Total Personnel Services – Employee Benefits				\$6,824,102.00
800 <u>Other Objects</u>				
810 Dues and Fees				265,571.00
Total Other Objects				\$265,571.00
Total 2300 Support Services – Administration				\$7,089,673.00

LEA : 123466403 Pottstown SD

Printed 6/26/2024 8:16:30 AM

Internal Service Fund (60)

2390 Other Administration Services	<u>Elementary</u>	<u>Secondary</u>	<u>Federal</u>	<u>Total</u>
200 <u>Personnel Services – Employee Benefits</u>				
210 Group Insurance – Contracted Provider				6,824,102.00
Total Personnel Services – Employee Benefits				\$6,824,102.00
800 <u>Other Objects</u>				
810 Dues and Fees				265,571.00
Total Other Objects				\$265,571.00
Total 2390 Other Administration Services				\$7,089,673.00

	<u>Food Service(51)</u>	<u>Child Care Operations(52)</u>	<u>Other Enterprise(58)</u>	<u>Internal Service(60)</u>	<u>Total</u>
2000 <u>Support Services</u>					
2300 Support Services - Administration				7,089,673.00	7,089,673.00
Total Support Services				\$7,089,673.00	\$7,089,673.00
3000 <u>Operation of Non-Instructional Services</u>					
3100 Food Services	2,332,493.89				2,332,493.89
Total Operation of Non-Instructional Services	\$2,332,493.89				\$2,332,493.89
TOTAL ACTUAL EXPENDITURES & OTHER FINANCING USES	\$2,332,493.89			\$7,089,673.00	\$9,422,166.89

LEA : 123466403 Pottstown SD

Printed 6/26/2024 8:16:49 AM

Fund	School	School Number	Local Personnel	Local Nonpersonnel	State Personnel	State Nonpersonnel	Federal Personnel	Federal Nonpersonnel	Total	Explanation
10										
	Barth El Sch	3345	1,982,878.62	444,387.47	2,334,814.21	523,260.56	722,398.38	244,380.83	6,252,120.07	
	Franklin El Sch	3339	2,025,872.81	460,225.43	2,385,439.33	541,909.56	552,917.57	255,934.31	6,222,299.01	
	Lincoln El Sch	3341	1,948,004.55	478,689.60	2,293,750.44	563,650.88	673,927.07	261,712.39	6,219,734.93	
	Pottstown MS	3346	5,856,247.21	1,515,608.38	6,895,656.19	1,784,609.48	1,549,208.47	884,550.91	18,485,880.64	
	Pottstown SHS	3348	6,004,911.50	1,884,868.82	7,070,706.49	2,219,408.92	1,144,864.25	785,734.74	19,110,494.72	
	Rupert El Sch	3342	1,984,531.35	457,083.19	2,336,760.28	538,209.61	518,177.71	265,403.60	6,100,165.74	
Total			19,802,446.04	5,240,862.89	23,317,126.94	6,171,049.01	5,161,493.45	2,697,716.78	62,390,695.11	